

WAAS CH 42699 W31A	APP CRS 309°	Rwy Idg TDZE Apt Elev	6601 660 661
--	------------------------	-----------------------------	---

RNAV (GPS) RWY 31

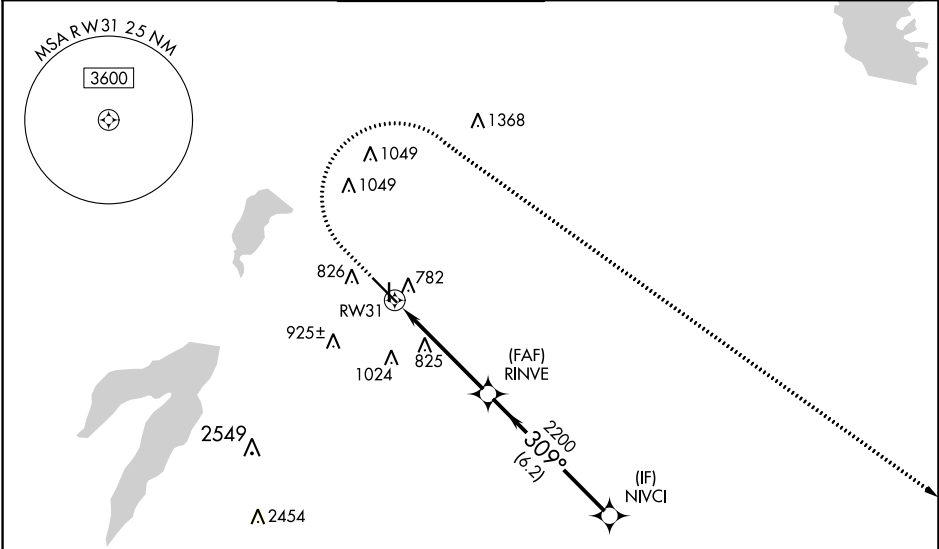
DALLAS EXEC (R.B.D)

RNP APCH - GPS.

▼ For uncompensated Baro-VNAV systems, LNAV/VNAV NA below -2°C or above 54°C.

▲ MISSED APPROACH: Climb to 1200 then climbing right turn to 2500 direct FLIPP and hold.

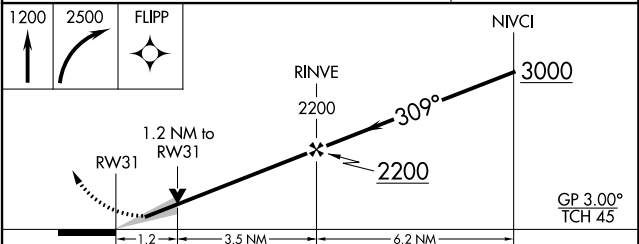
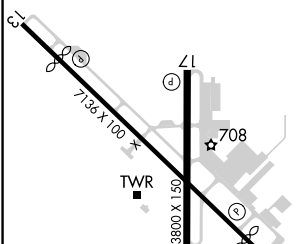
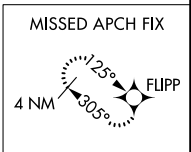
ATIS 126.35	REGIONAL APP CON 125.2 343.65	EXECUTIVE TOWER ★ 127.25 (CTAF) 0	GND CON 119.475	CLNC DEL 118.625	UNICOM 122.95
-----------------------	---	---	---------------------------	----------------------------	-------------------------



SC-2, 11 JUL 2024 to 08 AUG 2024

SC-2, 11 JUL 2024 to 08 AUG 2024

ELEV 661	D	TDZE 660
----------	----------	----------



CATEGORY	A	B	C	D
LPV DA		860-3/4	200 (200-3/4)	
LNAV/VNAV DA		993-1	333 (400-1)	
LNAV MDA	1080-1	420 (500-1)	1080-1 1/8	420 (500-1 1/8)
C CIRCLING	1160-1 499 (500-1)	1220-1 559 (600-1)	1340-2 679 (700-2)	1400-2 1/4 739 (800-2 1/4)