

# RNAV (GPS) RWY 35

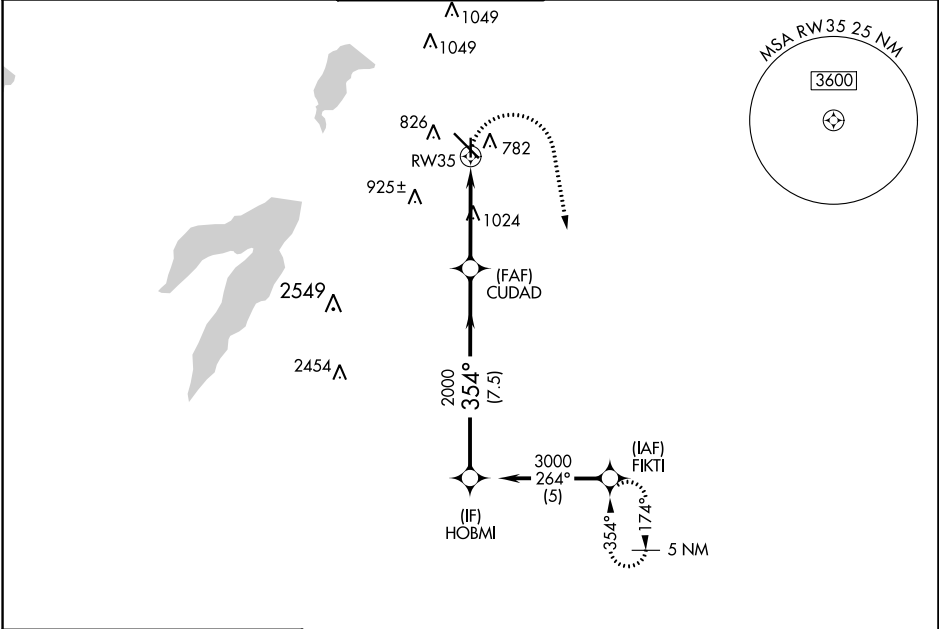
DALLAS EXEC (R.B.D)

APP CRS <b>354°</b>	Rwy Idg <b>3800</b>
	TDZE <b>659</b>
	Apt Elev <b>661</b>

RADAR required for procedure entry. RNP APCH.

MISSED APPROACH: Climbing right turn to 3000 direct FIKTI and hold.

ATIS <b>126.35</b>	REGIONAL APP CON <b>125.2 343.65</b>	EXECUTIVE TOWER ★ <b>127.25 (CTAF) 0</b>	GND CON <b>119.475</b>	CLNC DEL <b>118.625</b>	UNICOM <b>122.95</b>
-----------------------	---	---	---------------------------	----------------------------	-------------------------



SC-2, 11 JUL 2024 to 08 AUG 2024

SC-2, 11 JUL 2024 to 08 AUG 2024

