

# TEXOMA FIVE DEPARTURE

REGIONAL DEP CON  
125.2 343.65  
ATIS  
126.35  
CLNC DEL  
118.625  
GND CON  
119.475  
EXECUTIVE TOWER ★  
127.25 (CTAF)

**TOP ALTITUDE:  
ASSIGNED BY ATC**

TULSA  
114.4 TUL :...:  
Chan 91

RADAR and DME required.

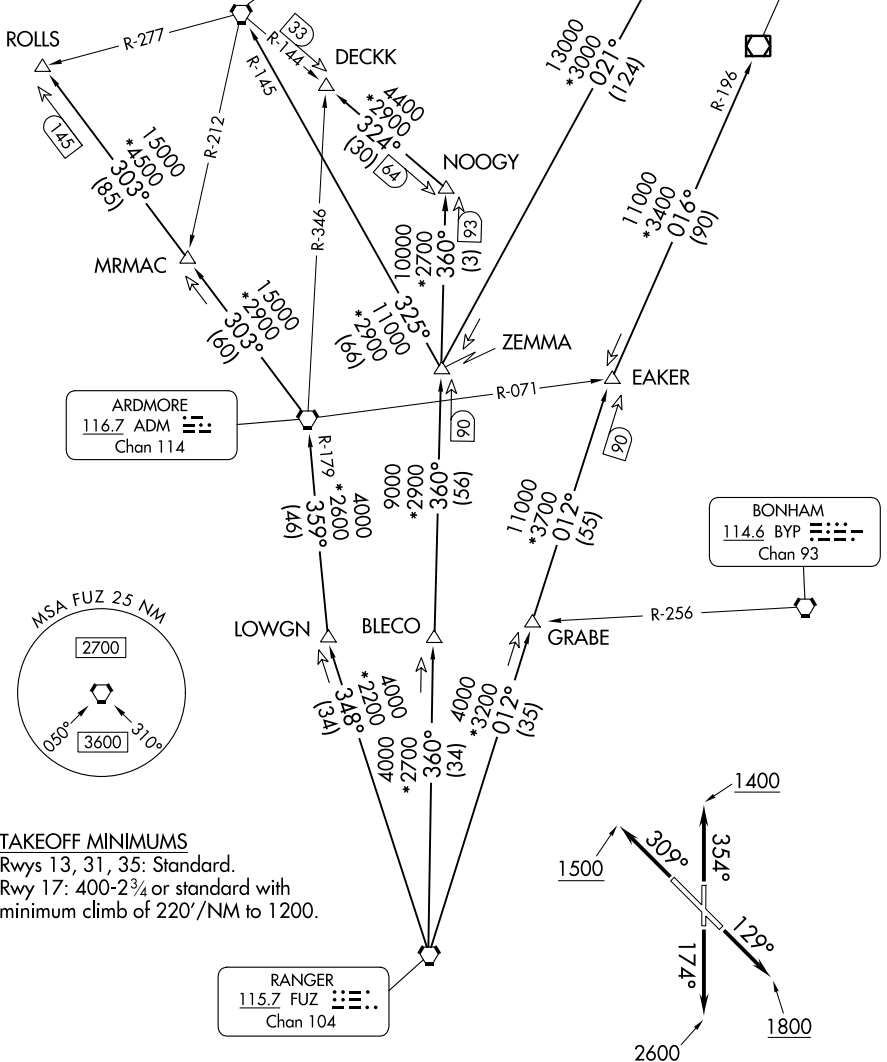
WILL ROGERS  
114.1 IRW :...:  
Chan 88

OKMULGEE  
114.9 OKM :...:  
Chan 96

ARDMORE  
116.7 ADM :...:  
Chan 114

BONHAM  
114.6 BYP :...:  
Chan 93

RANGER  
115.7 FUZ :...:  
Chan 104



SC-2, 11 JUL 2024 to 08 AUG 2024

SC-2, 11 JUL 2024 to 08 AUG 2024

NOTE: Chart not to scale.

(CONTINUED ON FOLLOWING PAGE)

# TEXOMA FIVE DEPARTURE