

(AGERS1 .AGERS) 22139

AL-744 (FAA)

FORT LAUDERDALE/HOLLYWOOD INTL (F.L.L.)

# AGERS ONE DEPARTURE (RNAV)

FORT LAUDERDALE, FLORIDA

**TOP ALTITUDE:  
4000**

RNAV 1- DME/DME/IRU or GPS.  
RADAR required.

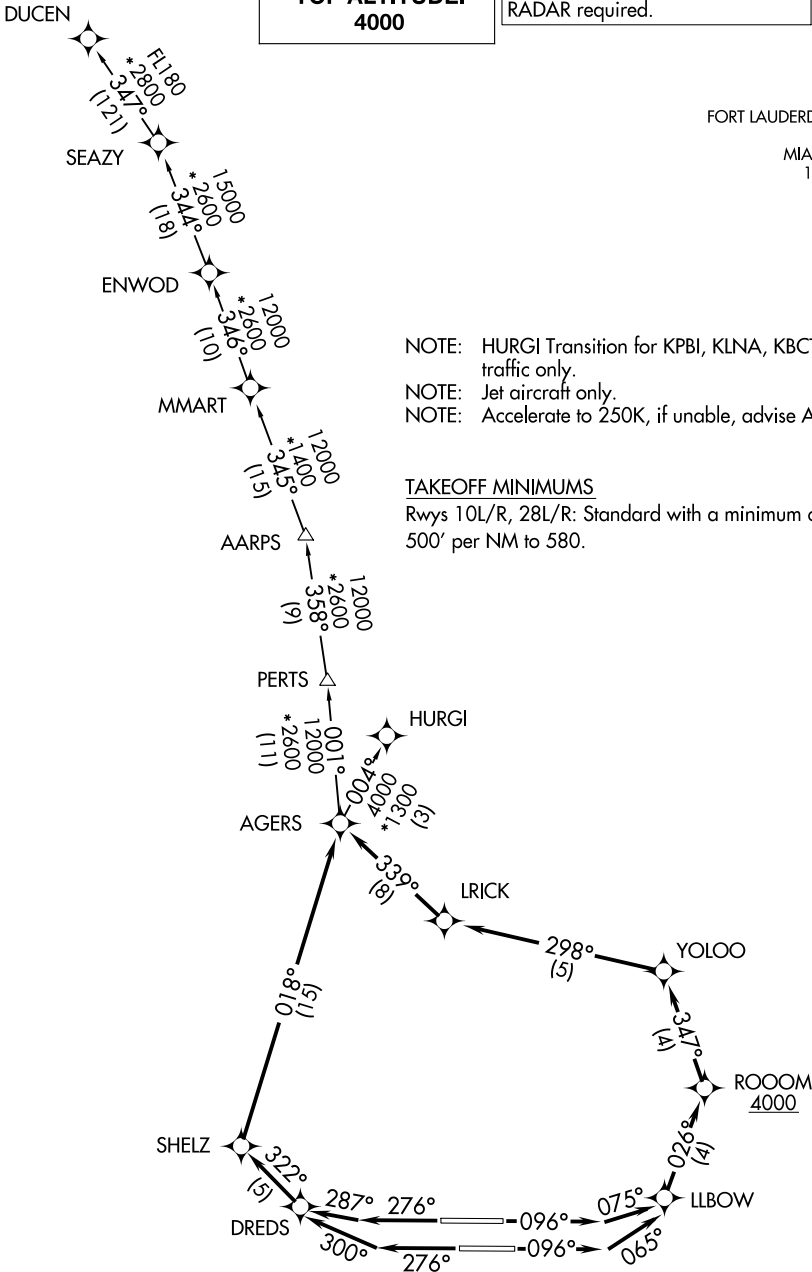
D-ATIS 135.0  
CLNC DEL 128.4  
CPDLC 128.4  
GND CON 121.4  
FORT LAUDERDALE TOWER 119.3 257.8  
MIAMI DEP CON 126.05 251.1

FORT LAUDERDALE TOWER 119.3 257.8  
MIAMI DEP CON 126.05 251.1

NOTE: HURGI Transition for KPBI, KLNA, KBCT landing traffic only.  
NOTE: Jet aircraft only.  
NOTE: Accelerate to 250K, if unable, advise ATC.

### TAKEOFF MINIMUMS

Rwys 10L/R, 28L/R: Standard with a minimum climb of 500' per NM to 580.



SE-3, 11 JUL 2024 to 08 AUG 2024

SE-3, 11 JUL 2024 to 08 AUG 2024

(NARRATIVE ON FOLLOWING PAGE)

NOTE: Chart not to scale.

## AGERS ONE DEPARTURE (RNAV)

FORT LAUDERDALE, FLORIDA

(AGERS1 .AGERS) 19MAY22

FORT LAUDERDALE/HOLLYWOOD INTL (F.L.L.)