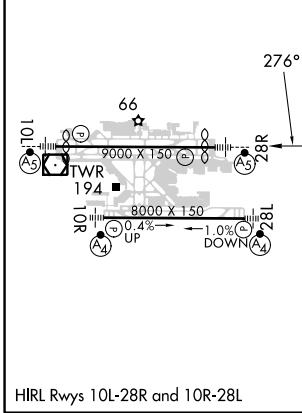
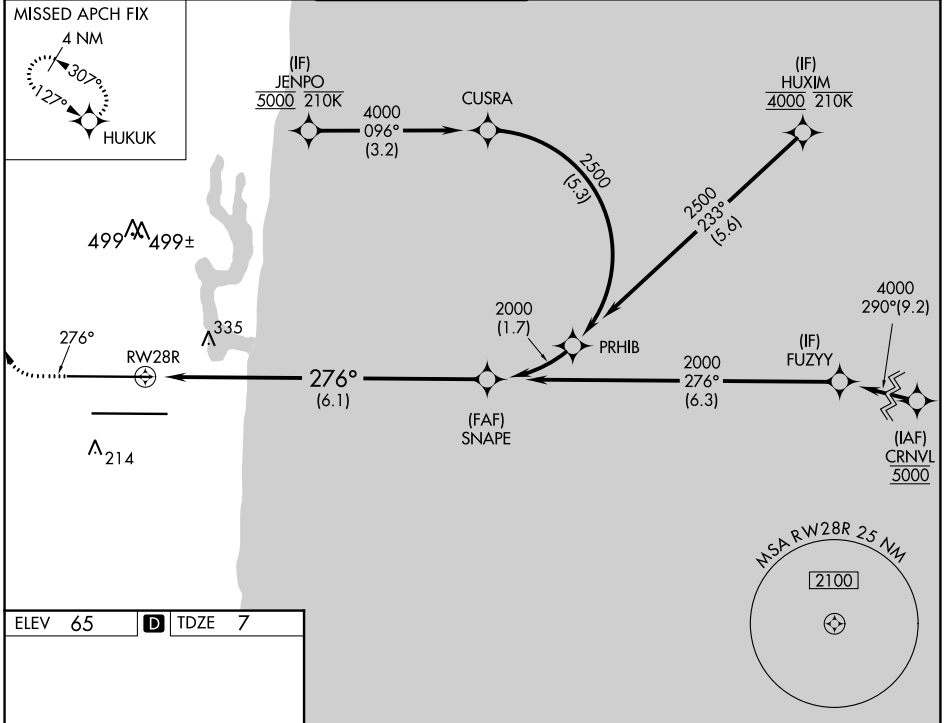


APP CRS	Rwy Idg	<b>8394</b>
<b>276°</b>	TDZE	<b>7</b>
	Apt Elev	<b>65</b>

# RNAV (RNP) Z RWY 28R

FORT LAUDERDALE/HOLLYWOOD INTL (FLL)

<b>RNP AR APCH - GPS. RADAR required.</b> Simultaneous approach authorized. For uncompensated Baro-VNAV systems, procedure NA below 7°C or above 54°C. For inop ALS, increase RNP 0.15 visibility to RVR 5500 and increase RNP 0.30 visibility to 1¾ SM.		MALSR 	MISSED APPROACH: Climb to 800 then climbing right turn to 4000 direct HUKUK and hold, continue climb-in-hold to 4000.		
D-ATIS	MIAMI APP CON	<b>FORT LAUDERDALE TOWER</b>	GND CON	CLNC DEL	CPDLC
<b>135.0</b>	<b>133.775 285.6</b>	<b>119.3 257.8</b>	<b>121.4</b>	<b>128.4</b>	



800	4000	HUKUK	VGSI and RNAV glidepath not coincident (VGSI Angle 3.00/TCH 69).	
			See planview for multiple IF locations.	
				SNAPE 2000 GP 3.00° TCH 49
6.1 NM				
CATEGORY	A	B	C	D
RNP 0.15 DA		362/40	355 (300-¾)	
RNP 0.30 DA		618-1⅓	611 (600-1⅓)	
<b>AUTHORIZATION REQUIRED</b>				

SE-3, 11 JUL 2024 to 08 AUG 2024

SE-3, 11 JUL 2024 to 08 AUG 2024