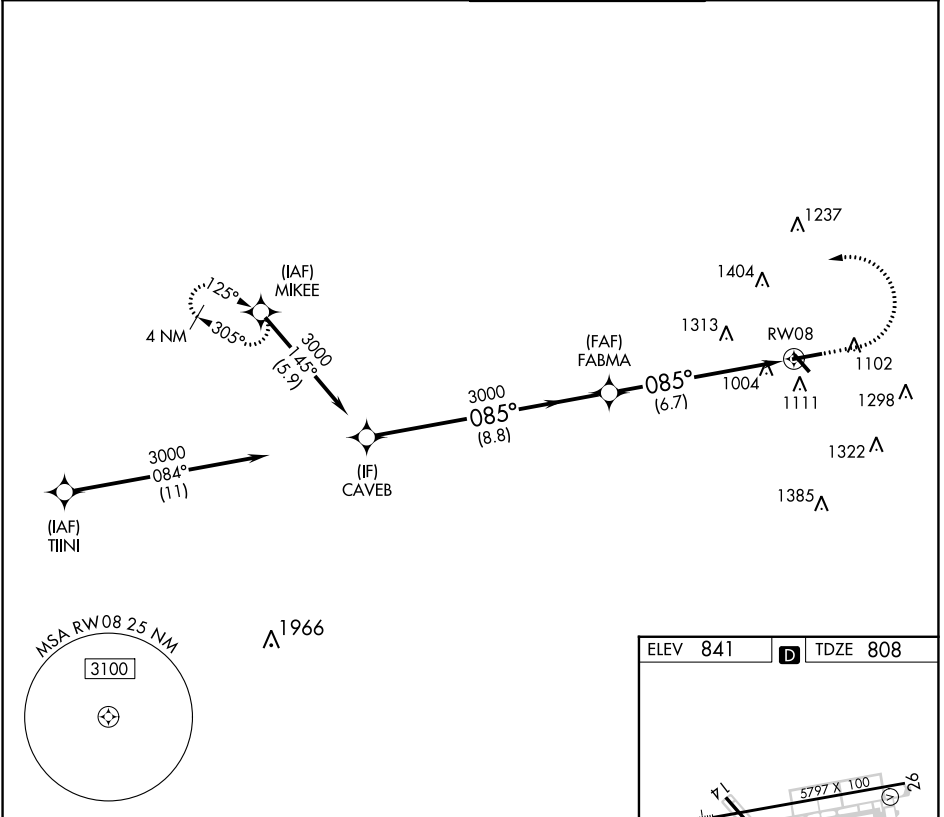


APP CRS	Rwy Idg	5797
085°	TDZE	808
	Apt Elev	841

RNAV (RNP) Z RWY 8

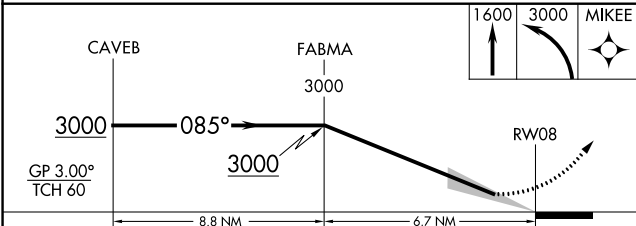
FULTON COUNTY EXEC/CHARLIE BROWN FLD (FTY)

RNP AR APCH.		MALS	MISSED APPROACH: Climb to 1600 then climbing left turn to 3000 direct MIKEE and hold.
<p>▼ For uncompensated Baro-VNAV systems, procedure NA below -11°C or above 54°C. Ridge with trees to 1299' MSL between FAF and runway threshold may be obscured by clouds even with airfield ceiling at or above procedure minimums.</p>			
ATIS	ATLANTA APP CON	FULTON COUNTY TOWER	GND CON
120.175	121.0 268.7	118.45 257.8	121.7 348.6



SE-4, 11 JUL 2024 to 08 AUG 2024

SE-4, 11 JUL 2024 to 08 AUG 2024



ELEV 841	D TDZE 808
----------	-------------------

HIRL Rwy 8-26
REIL Rws 14, 26

Diagram showing the HIRL and REIL for RWY 8 and RWY 26. The HIRL for RWY 8 is 5797 X 100. The REIL for RWY 8 is 1013. The REIL for RWY 26 is 969. The diagram also shows the 1000 ft obstacle near RWY 8 and the 085° approach direction.

CATEGORY	A	B	C	D
RNP 0.30 DA		1401-1¼	593 (600-1¼)	

AUTHORIZATION REQUIRED