

APP CRS	Rwy ldg	7959
306°	TDZE	591
	Apt Elev	597

RNAV (RNP) Z RWY 30

GARY/CHICAGO INTL (GYY)

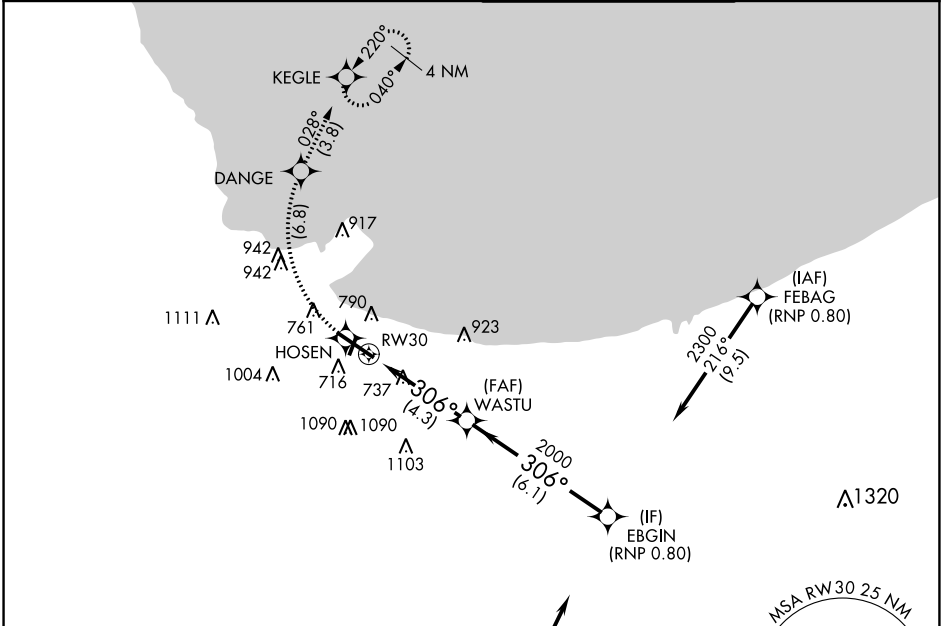
RNP AR APCH - GPS.

▼ For uncompensated Baro-VNAV systems, procedure NA below -16°C or above 54°C. Missed approach requires RNP less than 1.0. For inop ALS, increase RNP 0.30 all Cats visibility to 1½ SM.

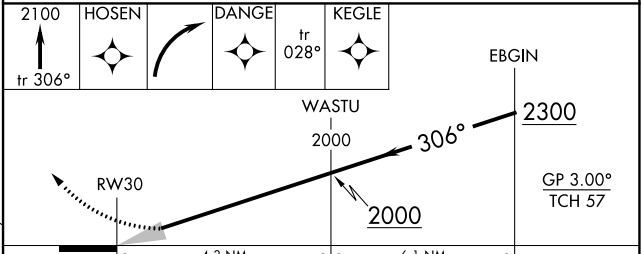
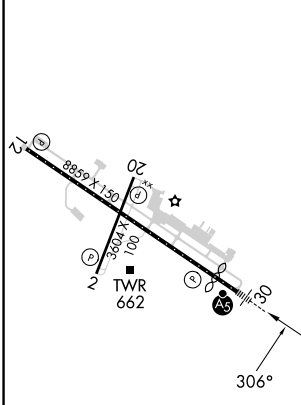


MISSED APPROACH: Climb to 2100 on track 306° to HOSEN, right turn to DANGE, then track 028° to KEGLE and hold.

ATIS 134,575	CHICAGO APP CON 133.1 285.6	GARY TOWER ★ 125.6 (CTAF) 0	GND CON 121.9
------------------------	---------------------------------------	---------------------------------------	-------------------------



ELEV 597	D	TDZE 591
----------	---	----------



CATEGORY	A	B	C	D
RNP 0.13 DA		976/35	385 (400-½%)	
RNP 0.30 DA		1098/55	507 (600-1)	

AUTHORIZATION REQUIRED

EC-2, 11 JUL 2024 to 08 AUG 2024

EC-2, 11 JUL 2024 to 08 AUG 2024