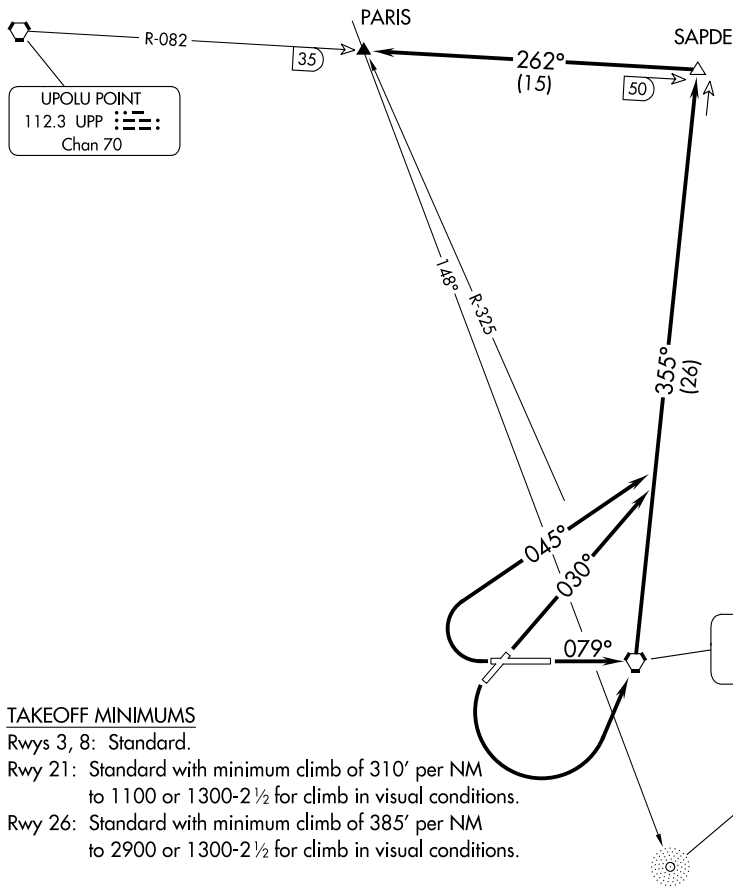


(PARIS4.PARIS) 24025

PARIS FOUR DEPARTURE (OBSTACLE)

AL-756 (FAA)

HILO INTL (ITO)(PHTO)
HILO, HAWAII



ATIS 126.4
 GND CON 121.9
 HILO TOWER* 118.1 (CTAF) 263.1
 HILO DEP CON* 119.7 269.2

TAKEOFF MINIMUMS

Rwys 3, 8: Standard.

Rwy 21: Standard with minimum climb of 310' per NM to 1100 or 1300-2½ for climb in visual conditions.

Rwy 26: Standard with minimum climb of 385' per NM to 2900 or 1300-2½ for climb in visual conditions.

(CONTINUED ON FOLLOWING PAGE)

NOTE: Chart not to scale.

DEPARTURE ROUTE DESCRIPTION

TAKEOFF RUNWAY 3: Climb heading 030° and ITO R-355 to SAPDE INT, thence. . . .

TAKEOFF RUNWAY 8: Climb heading 079° to ITO VORTAC and ITO R-355 to SAPDE INT, thence. . . .

TAKEOFF RUNWAY 21: Climbing left turn direct ITO VORTAC and ITO R-355 to SAPDE INT, or climb in visual conditions to cross ITO VORTAC northbound at or above 1200 MSL, then via R-355 to SAPDE INT, thence. . . .

TAKEOFF RUNWAY 26: Climbing right turn via heading 045° and ITO R-355 to SAPDE INT, or climb in visual conditions to cross ITO VORTAC northbound at or above 1200 MSL, then via R-355 to SAPDE INT, thence. . . .

. . . .proceed via UPP R-082 to PARIS INT.

PARIS FOUR DEPARTURE (OBSTACLE)

(PARIS4.PARIS) 11FEB10

HILO, HAWAII
HILO INTL (ITO)(PHTO)

PAC, 11 JUL 2024 to 05 SEP 2024

PAC, 11 JUL 2024 to 05 SEP 2024