

LOC/DME I-TBQ 110.1 Chan 38	APP CRS 337°	Rwy Idg 6431 TDZE 645 Apt Elev 645
-------------------------------------------------	------------------------	---------------------------------------------------------------

ILS or LOC RWY 34

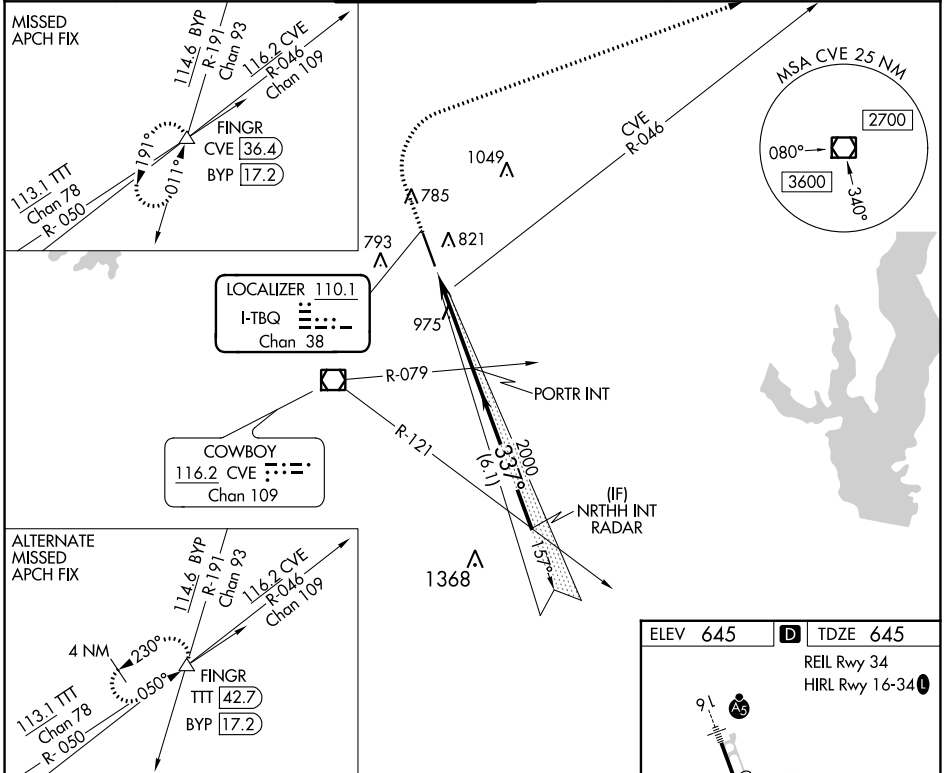
ADDISON (ADS)

DME Required. RADAR required for procedure entry.

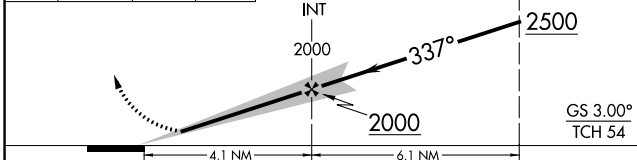
▼
▲ Rwy 34 helicopter visibility reduction below 3/4 SM NA.

MISSED APPROACH: Climb to 1500 then climbing right turn to 5000 on heading 067° and CVE VOR/DME R-046 to FINGR/CVE 36.4 DME and hold.

ATIS 133.4	REGIONAL APP CON 124.3 282.275	ADDISON TOWER * 126.0 (CTAF) 239.0	GND CON 121.6	CLNC DEL 119.55	UNICOM 122.95
----------------------	------------------------------------------	----------------------------------------------	-------------------------	---------------------------	-------------------------



1500	5000	hdg 067°	CVE R-046	FINGR	VGSI and ILS glidepath not coincident (VGSI Angle 3.00/TCH 60).	NRTHH INT RADAR
------	------	----------	-----------	-------	-----------------------------------------------------------------	-----------------



CATEGORY	A	B	C	D
S-ILS 34	895-3/4 250 (300-3/4)			
S-LOC 34	1240-1 595 (600-1)		1240-1 3/4 595 (600-1 3/4)	

ELEV 645	D TDZE 645
REIL Rwy 34 HIRL Rwy 16-34	

The map view shows the runway layout for Runway 34. Key features include:

- TWR 710:** Tower location.
- Runway 34:** Orientation and length.
- Navigation Aids:** Locations of various aids relative to the runway.
- Scale:** FAF to MAP 4.1 NM.

Knots	60	90	120	150	180
Min:Sec	4:06	2:44	2:03	1:38	1:22

SC-2, 11 JUL 2024 to 08 AUG 2024

SC-2, 11 JUL 2024 to 08 AUG 2024