

KINGDOM FOUR DEPARTURE

SC-2, 11 JUL 2024 to 08 AUG 2024

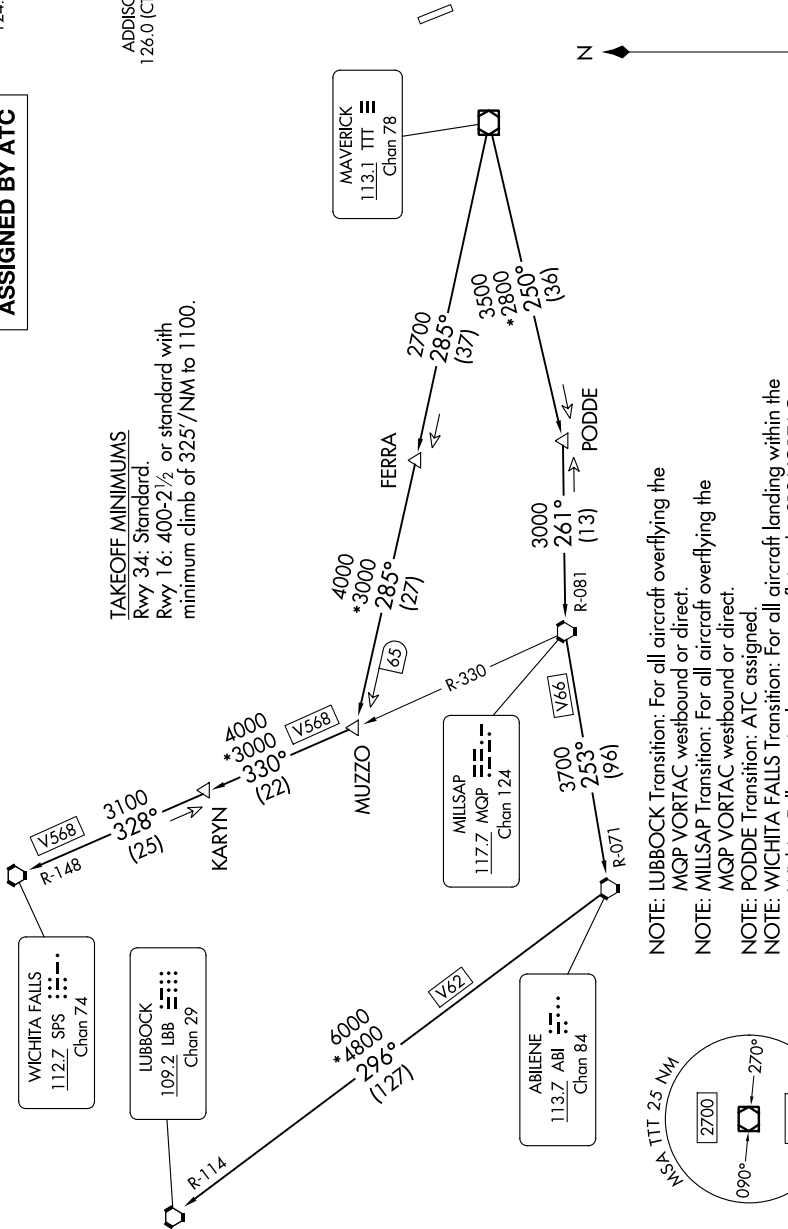
RADAR and DME required.

**TOP ALTITUDE:
ASSIGNED BY ATC**

REGIONAL DEP CON
124.3 282.275
ATIS
133.4
CLNC DEL
119.55
GND CON
121.6
ADDISON TOWER *
126.0 (CTAF) 239.0

TAKEOFF MINIMUMS

Rwy 34: Standard.
Rwy 16: 400-2½ or standard with
minimum climb of 325'/NM to 1100.



- NOTE: LUBBOCK Transition: For all aircraft overlying the MQP VORTAC westbound or direct.
- NOTE: MILLSAP Transition: For all aircraft overlying the MQP VORTAC westbound or direct.
- NOTE: PODDE Transition: ATC assigned.
- NOTE: WICHITA FALLS Transition: For all aircraft landing within the Wichita Falls terminal area or overlying the SPS VORTAC.
- NOTE: For all aircraft requesting 17000 and below.

NOTE: Chart not to scale.

(CONTINUED ON FOLLOWING PAGE)

SC-2, 11 JUL 2024 to 08 AUG 2024

KINGDOM FOUR DEPARTURE