

MARYSVILLE, CALIFORNIA

# HI-ILS or LOC Z RWY 15

LOC I-BAB <b>109.5</b>	APCH CRS <b>145°</b>	Rwy Idg 12,001	TDZE 113	Arpt Elev 113
---------------------------	-------------------------	-------------------	-------------	------------------

-(USAF)

BEALE AFB (KBAB)

RADAR or DME required

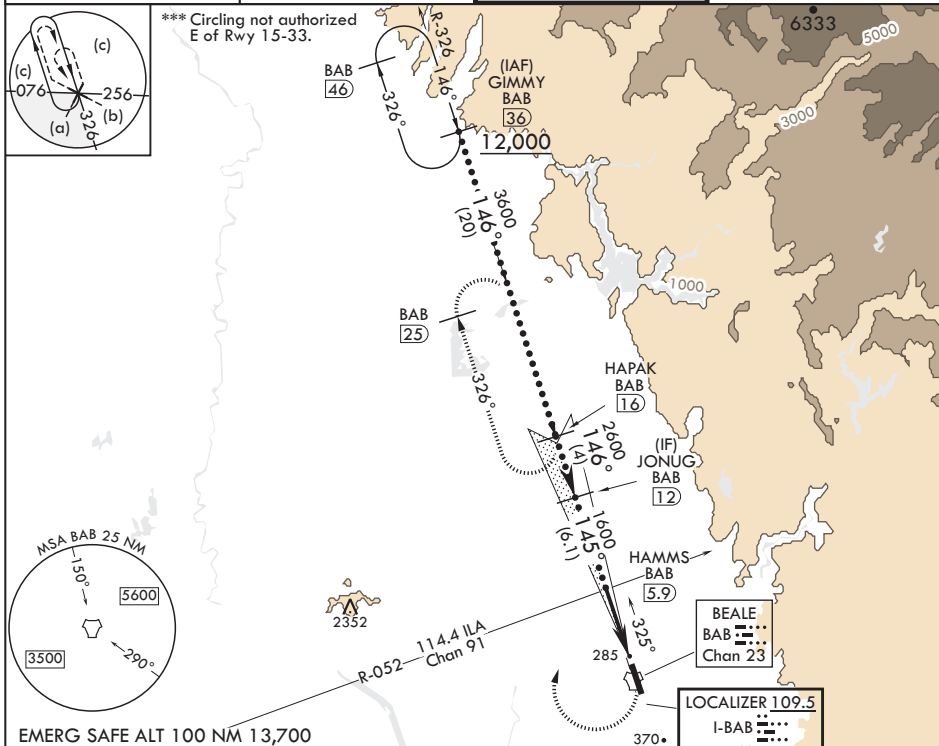
▼ \* When ALS inop, increase CAT CDE RVR to 40 and vis to 3/4 mile.  
\*\* When ALS inop, increase CAT CDE vis to 1 3/8 miles.

ALSF-1

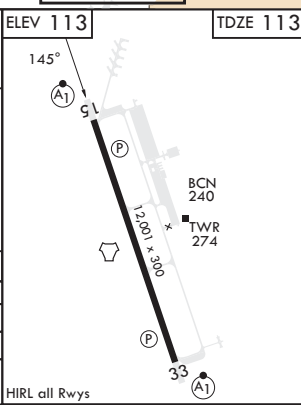


MISSED APPROACH: Climb to to 700 on heading 145°, then climbing right turn to 4400 heading 011° to intercept BAB R-326 to HAPAK and hold, continue climb in hold to 4400.

ATIS* <b>124.55 273.5</b>	NORCAL APP CON <b>125.4 259.1</b>	TOWER* <b>119.4 284.75</b>	GND CON <b>121.6 257.75</b>
------------------------------	--------------------------------------	-------------------------------	--------------------------------



JONUG [12]	VGSI and glideslope not coincident. (VGSI Angle 2.75/TCH 53)	700	4400	ELEV 113	TDZE 113
2600	HAMMS [5.9] ILA R-052	↑	hdg 011°	BAB R-326	
GS 2.75° TCH 47	1600		2.5	TACAN	
			HEGOP [1.5]		
			4.5 NM		
			0.5		
CATEGORY	C	D	E		
S-ILS 15*	313/24	200	(200-1/2)		
S-LOC 15**	600/50	487	(500-1)		
☐ CIRCLING***	600-1 1/2 487 (500-1 1/2)	800-2 1/4 687 (700-2 1/4)	800-2 1/2 687 (700-2 1/2)		



SW-2, 11 JUL 2024 to 08 AUG 2024

SW-2, 11 JUL 2024 to 08 AUG 2024

MARYSVILLE, CALIFORNIA

39°08'N - 121°26'W

BEALE AFB (KBAB)

Amdt 6 25JAN24

# HI-ILS or LOC Z RWY 15