

MARYSVILLE, CALIFORNIA

ILS or LOC Y RWY 33

LOC I-MIZ 109.5	APCH CRS 325°	Rwy ldg TDZE Arprt Elev	12,001 105 113
---------------------------	-------------------------	-------------------------------	---

-(USAF)

BEALE AFB (KBAB)

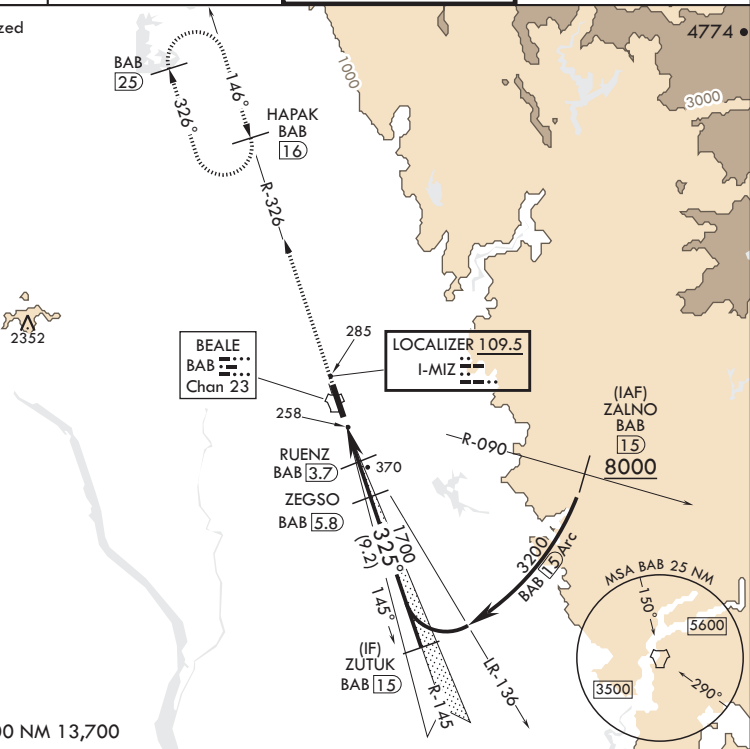
RADAR or DME required

▼ * When ALS inop, increase RVR to 40 and vis to 3/4 mile.
 ** When ALS inop, increase CAT AB RVR to 55 and vis to 1 mile;
 CAT CDE RVR to 60 and vis to 1 1/8 miles.

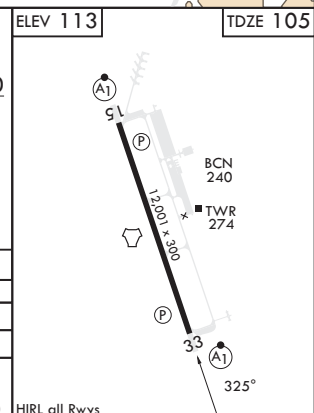
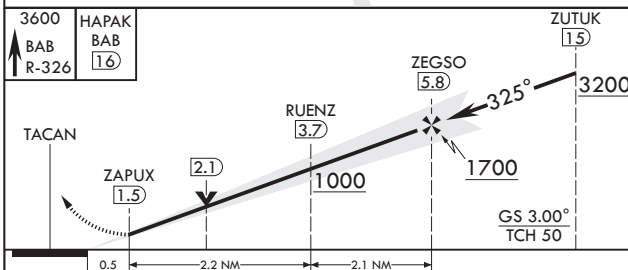
ALSF-1 MISSED APPROACH: Climb to 3600 intercept
 BAB TACAN R-326 to HAPAK and hold.

ATIS★ 124.55 273.5	NORCAL APP CON 125.4 259.1	TOWER★ 119.4 284.75	GND CON 121.6 257.75
------------------------------	--------------------------------------	-------------------------------	--------------------------------

*** Circling not authorized
 E of Rwy 15-33.



EMERG SAFE ALT 100 NM 13,700



CATEGORY	A	B	C	D	E
S-ILS 33*	305/24		200	(200-½)	
S-LOC 33**	520/24	415 (500-½)	520/40	415	(500-¾)
CIRCLING***	600-1 487 (500-1)		600-1½ 487 (500-1½)	800-2¼ 687 (700-2¼)	800-2½ 687 (700-2½)

HIRL all Rwy's

MARYSVILLE, CALIFORNIA

39°08'N - 121°26'W

BEALE AFB (KBAB)

Amdt 6 22FEB24

ILS or LOC Y RWY 33

SW-2, 11 JUL 2024 to 08 AUG 2024

SW-2, 11 JUL 2024 to 08 AUG 2024