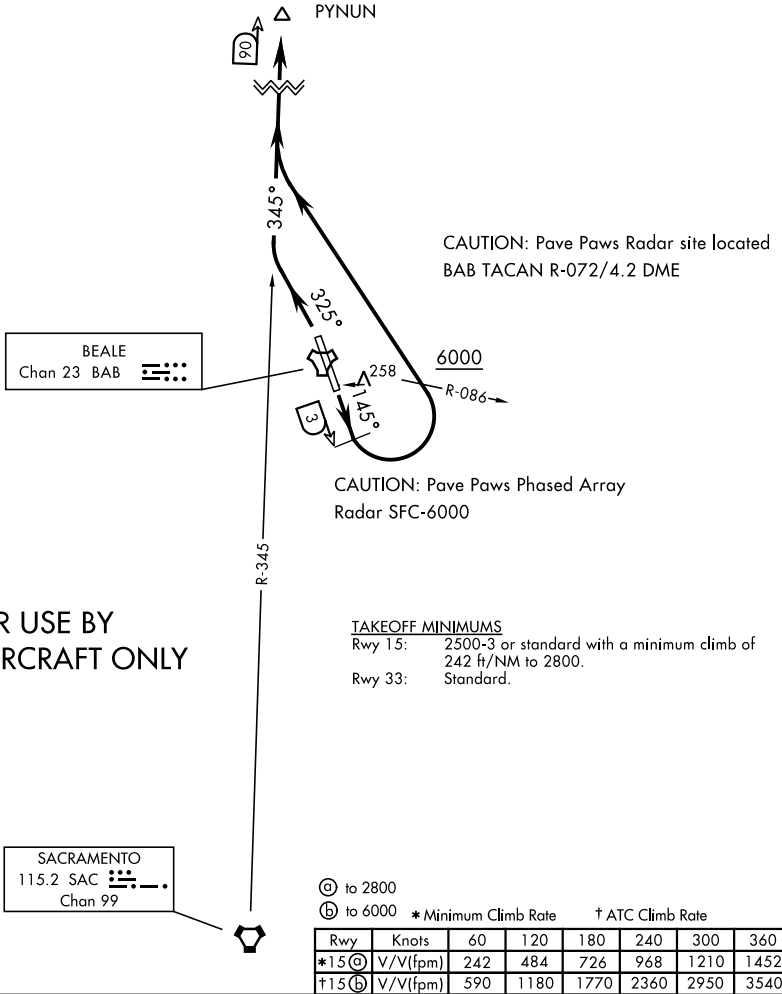


# PYNUN-SEVEN DEPARTURE (PYNUN7 • PYNUN)

[USAF]

6768

ATIS ★  
124.55 273.5  
GND CON  
121.6 257.75  
BEALE TOWER ★  
119.4 284.75  
NORCAL DEP CON  
125.4 259.1



SW-2, 11 JUL 2024 to 08 AUG 2024

SW-2, 11 JUL 2024 to 08 AUG 2024

## DEPARTURE ROUTE DESCRIPTION

TAKEOFF RWY 15: Fly heading 145° until BAB TACAN 3 DME, turn left heading 300° to intercept SAC VORTAC R-345 to PYNUN. Cross BAB R-086 at or above 6000. Then via assigned route.

TAKEOFF RWY 33: Fly heading 325° intercept SAC VORTAC R-345 to PYNUN. Then via assigned route.