

MARYSVILLE, CALIFORNIA

# RNAV (GPS) RWY 33

APCH CRS <b>325°</b>	Rwy Idg THRE Arprt Elev <b>12,001</b> <b>105</b> <b>113</b>
-------------------------	--

(USAF)

BEALE AFB (KBAB)

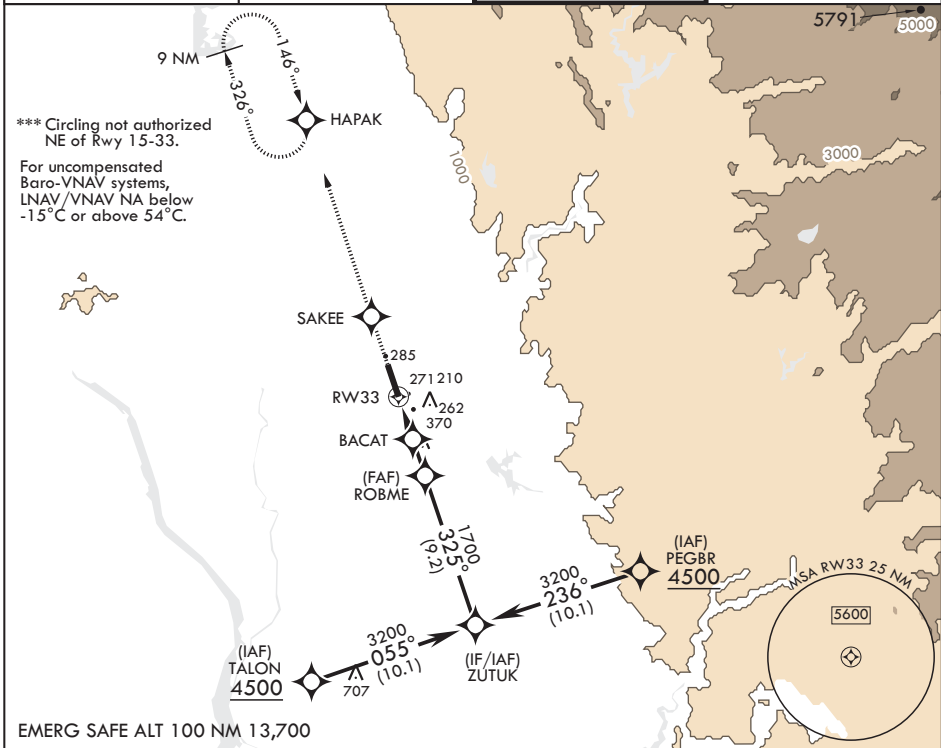
RNP APCH



MISSED APPROACH: Climb to 3600 direct SAKEE, track 326° to HAPAK and hold.

▼ \* When ALS inop, increase vis to 1 1/4 miles.  
 \*\* When ALS inop, increase CAT AB RVR to 55 and vis to 1 mile, CAT CDE vis to 1 1/4 miles.

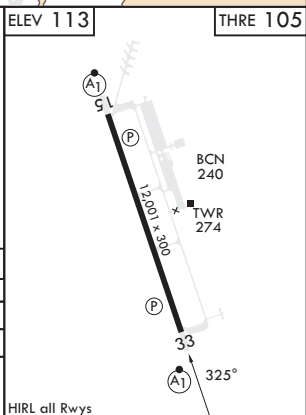
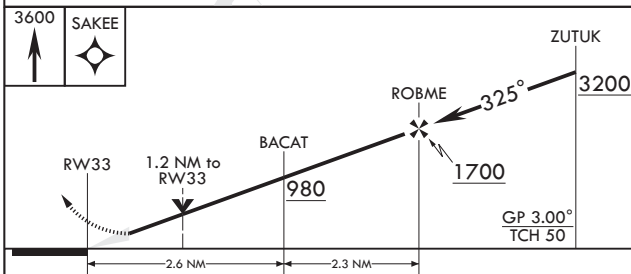
ATIS★ <b>124.55 273.5</b>	NORCAL APP CON <b>125.4 259.1</b>	TOWER★ <b>119.4 284.75</b>	GND CON <b>121.6 257.75</b>
------------------------------	--------------------------------------	-------------------------------	--------------------------------



SW-2, 11 JUL 2024 to 08 AUG 2024

SW-2, 11 JUL 2024 to 08 AUG 2024

EMERG SAFE ALT 100 NM 13,700



CATEGORY	A	B	C	D	E
LNAV/VNAV DA*	540/40		435	(500-¾)	
LNAV MDA**	540/24	435 (500-½)	540/40	435	(500-¾)
☐ CIRCLING***	600-1	487 (500-1)	600-1½ 487 (500-1½)	800-2¼ 687 (700-2¼)	800-2½ 687 (700-2½)

HIRL all Rwys

MARYSVILLE, CALIFORNIA

39°08'N - 121°26'W

BEALE AFB (KBAB)

Amdt 2 22FEB24

# RNAV (GPS) RWY 33