

| | | | |
|---|------------------------|-----------------------------|---|
| LOC/DME I-LNY 111.1 Chan 48 | APP CRS 033° | Rwy Idg TDZE Apt Elev | 5000 1307 1308 |
|---|------------------------|-----------------------------|---|

ILS or LOC RWY 3

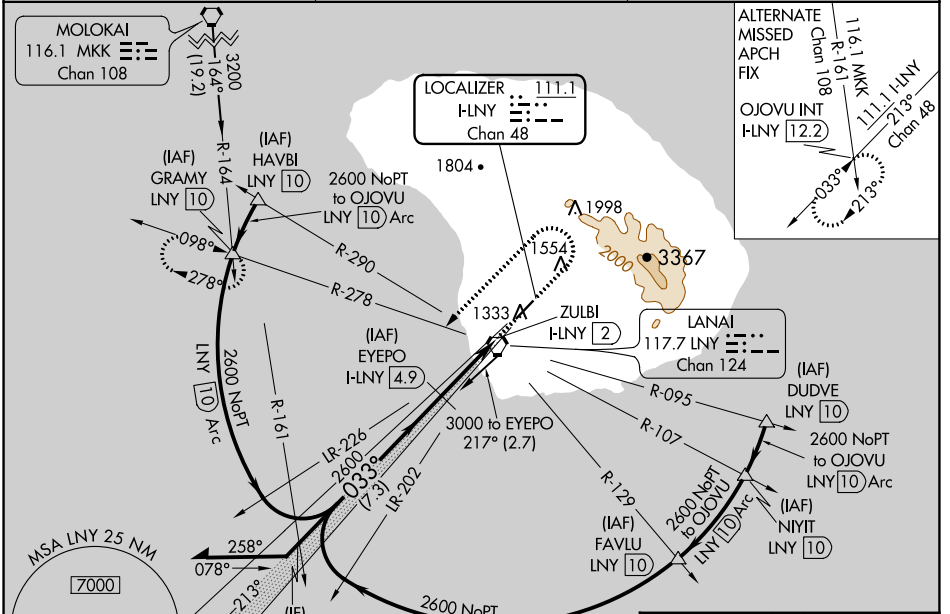
LANAI (LNY)(PHNY)

DME required.

NA Circling Rwy 21 NA at night. Autopilot coupled approach NA below 1505. When local altimeter setting not received, procedure NA, except for operators with approved weather reporting service. Circling NA for Cat C southeast of Rwy 3-21.

MISSED APPROACH: Climb to 1800 then climbing left turn to 3500 on heading 224° and LNY VORTAC R-278 to GRAMY INT/LNY VORTAC 10 DME and hold.

| | | |
|---------------------------|----------------------------------|----------------------|
| AWOS-3P 118.375 | HCF CENTER 119.3 307.1 | CTAF 122.9 |
|---------------------------|----------------------------------|----------------------|



MSA LNY 25 NM
7000

VGSI and ILS glidepath not coincident EYEPO (VGSI Angle 3.00/TCH 49).
Remain within 10 NM

3000
2600
GS 3.00° TCH 52

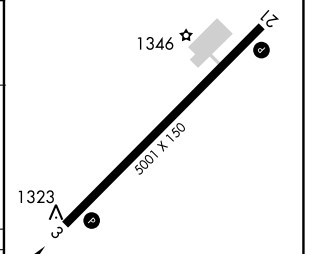
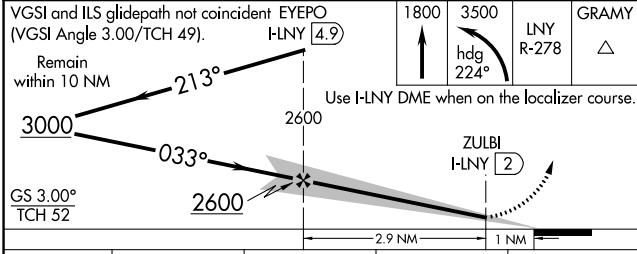
Use I-LNY DME when on the localizer course.

ZULBI I-LNY 2

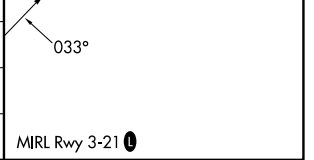
1800 3500 LNY GRAMY
hdg R-278 △

2.9 NM 1 NM

| | |
|-----------|-----------|
| ELEV 1308 | TDZE 1307 |
|-----------|-----------|



| CATEGORY | A | B | C | D |
|----------|-------------------------|-------------------------|-------------------------|----|
| S-ILS 3 | | 1588-1 | 281 (300-1) | |
| S-LOC 3 | | 1580-1¼ | 273 (300-1¼) | |
| CIRCLING | 1900-1¼ 592 (600-1¼) | 1940-1¼ 632 (700-1¼) | 2140-2½ 832 (900-2½) | NA |



PAC, 11 JUL 2024 to 05 SEP 2024

PAC, 11 JUL 2024 to 05 SEP 2024