

APP CRS	Rwy Idg	<b>5000</b>
<b>033°</b>	TDZE	<b>1307</b>
	Apt Elev	<b>1308</b>

# RNAV (GPS) RWY 3

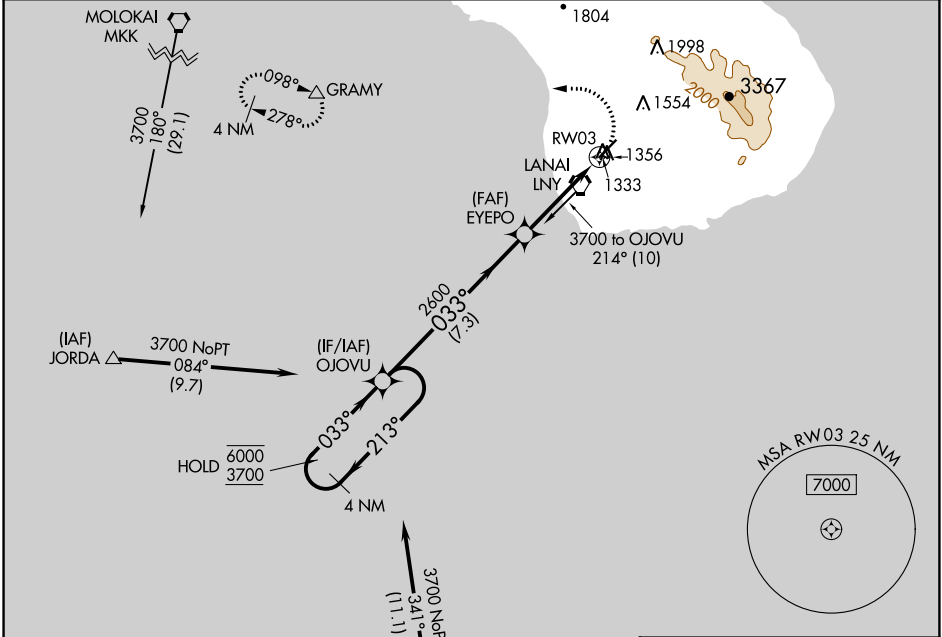
LANAI (LNY)(PHNY)

RNP APCH.

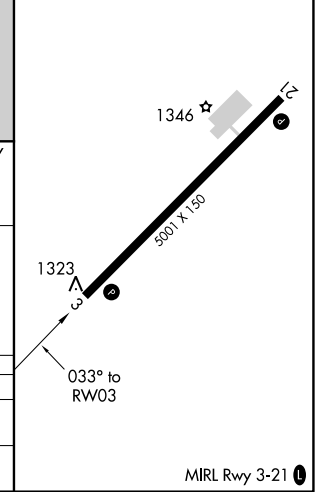
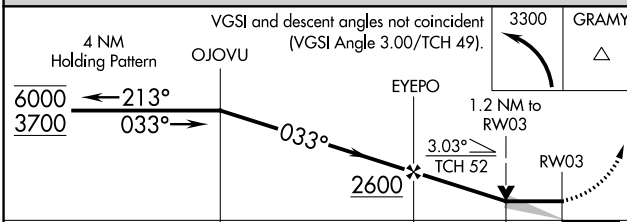
**▼** Circling Rwy 21 NA at night. When local altimeter setting not received, procedure NA, except for operators with approved weather reporting service.  
**▲** Circling NA for Cat C southeast of Rwy 3-21.

MISSED APPROACH: Climbing left turn to 3300 direct GRAMY and hold.

AWOS-3P <b>118.375</b>	HCF CENTER <b>119.3 307.1</b>	CTAF <b>122.9</b> <b>①</b>
---------------------------	----------------------------------	-------------------------------



ELEV 1308	<b>D</b>	TDZE 1307
-----------	----------	-----------



CATEGORY	A	B	C	D
RNAV MDA	1720-1	413 (500-1)	1720-1¼	413 (500-1¼)
CIRCLING	1840-1 532 (600-1)	1900-1 592 (600-1)	2140-2½ 832 (900-2½)	NA

PAC, 11 JUL 2024 to 05 SEP 2024

PAC, 11 JUL 2024 to 05 SEP 2024

MIRL Rwy 3-21 **①**