

HI-VOR or TACAN RWY 17R

VORTAC BFV 110.0 Chan 37	APCH CRS 177°	Rwy Idg 13,503 TDZE 1922 Arprt Elev 1922
--	-------------------------	---

AL-778 [USAF]

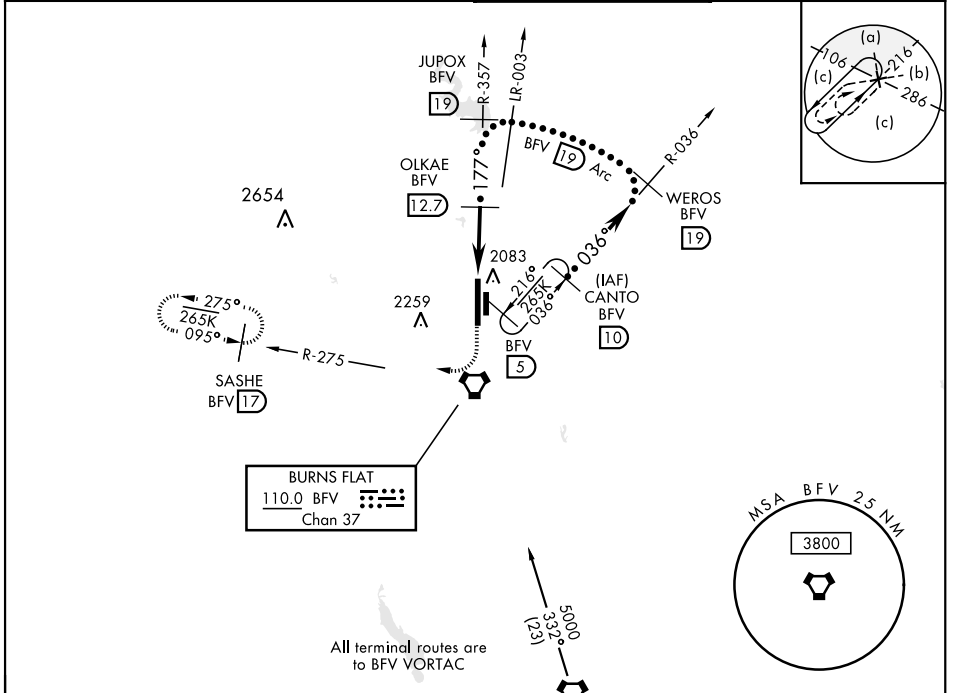
CLINTON-SHERMAN (KCSM)

DME required

* Circling not authorized E of Rwy 17R-35L.

MISSED APPROACH: Climb to 3000 then climbing right turn to 5000 via heading 220° and BFV R-275 to SASHE/17 DME and hold.

ASOS 118.45	FORT WORTH CENTER 128.4 269.375	TOWER ★ 119.6 (CTAF) 0 256.9	GND CON 121.7 239.0
-----------------------	---	--	-------------------------------



SC-1, 11 JUL 2024 to 08 AUG 2024

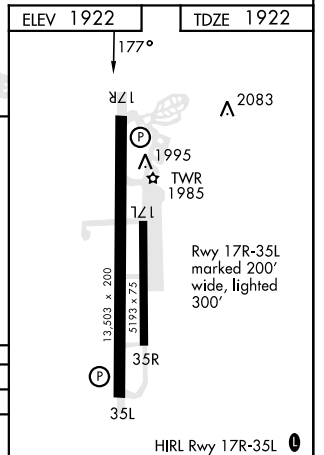
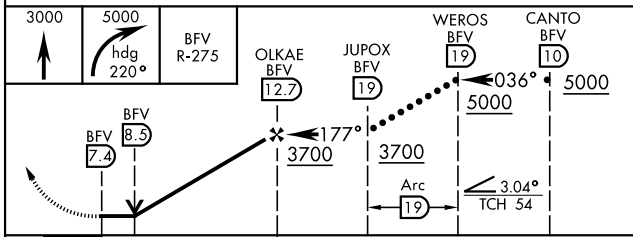
SC-1, 11 JUL 2024 to 08 AUG 2024

All terminal routes are to BFV VORTAC

BURNS FLAT
110.0 BFV
Chan 37

HOBART
111.8 HBR
Chan 55

EMERG SAFE ALT 100 NM 5000



CATEGORY	C	D	E
S-17R	2380-1½ 458 (500-1½)	2340-1¼ 418 (500-1¼)	2620-2½ 698 (700-2½)
CIRCLING*	2380-1½ 458 (500-1½)	2620-2¼ 698 (700-2¼)	2620-2½ 698 (700-2½)

HIRL Rwy 17R-35L 0

HI-VOR or TACAN RWY 17R