


LOC/DME I-PAJ <b>109.1</b> Chan 28	APP CRS <b>191°</b>	Rwy Idg <b>10801</b> TDZE <b>991</b> Apt Elev <b>1027</b>
------------------------------------------	------------------------	-----------------------------------------------------------------

# ILS RWY 19R (SA CAT I)

## KANSAS CITY INTL (MCI)

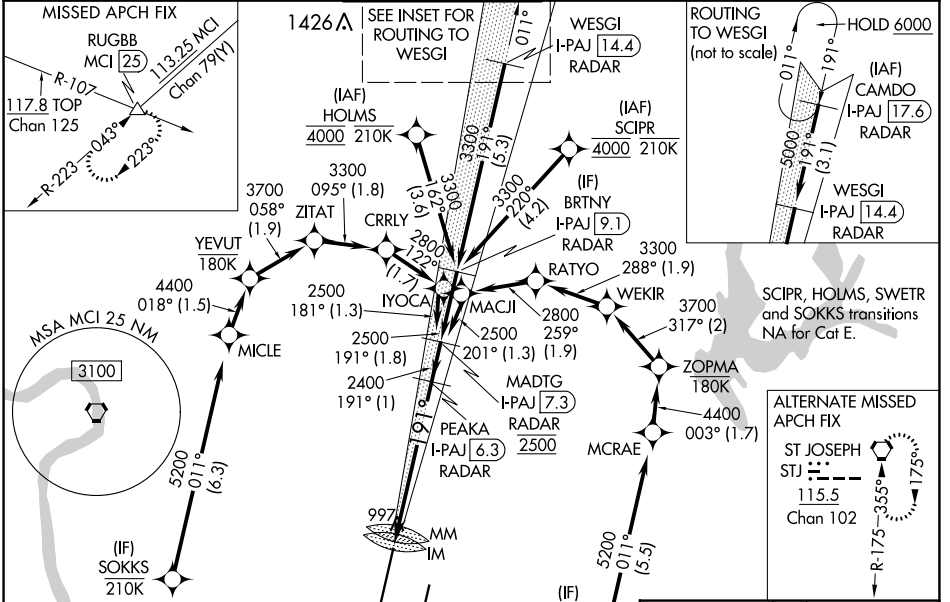
RNP APCH - GPS. From SCIPR or HOLMS or SWETR or SOKKS.  
 DME or RADAR required. RADAR required for procedure entry at CAMDO.

**ALSF-2**  


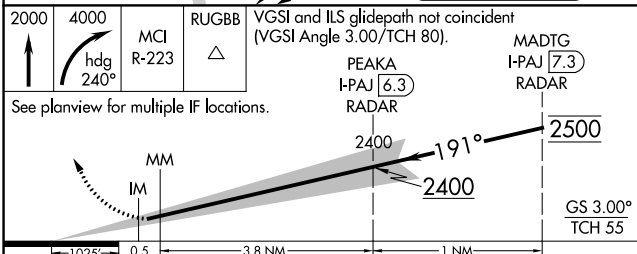
**MISSED APPROACH:** Climb to 2000 then climbing right turn to 4000 on heading 240° and MCI VORTAC R-223 to RUGBB INT/MCI 25 DME and hold.

Requires specific OPSPEC, MSPEC, or LOA approval. Simultaneous approach authorized except from SCIPR, HOLMS, SOKKS, and SWETR.

D-ATIS <b>128.375</b>	KANSAS CITY APP CON <b>120.95 318.1</b>	INTERNATIONAL TOWER <b>128.2 254.25</b>	GND CON <b>121.8</b>	CLNC DEL <b>135.7</b>	CPDLC
--------------------------	--------------------------------------------	--------------------------------------------	-------------------------	--------------------------	-------

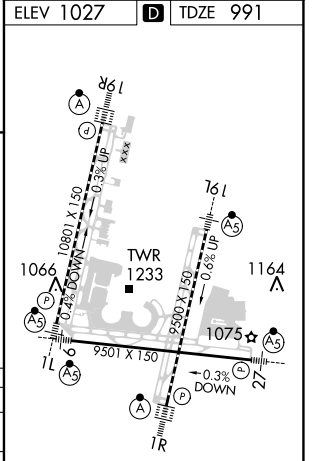
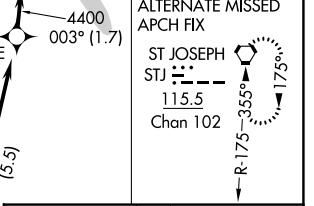
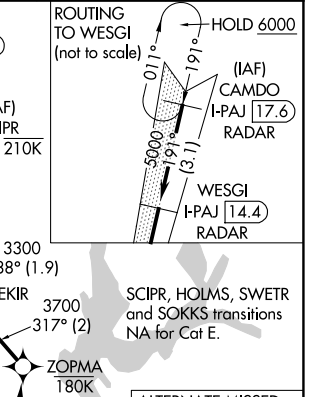


ELEV 1027	<b>D</b> TDZE 991
<b>LOCALIZER 109.1</b> I-PAJ Chan 28	



CATEGORY	A	B	C	D	E
S-ILS 19R	RA 135/14 150 DA 1141				

**SA CATEGORY I ILS - SPECIAL AIRCREW & AIRCRAFT CERTIFICATION REQUIRED**



NC-3, 11 JUL 2024 to 08 AUG 2024

NC-3, 11 JUL 2024 to 08 AUG 2024