

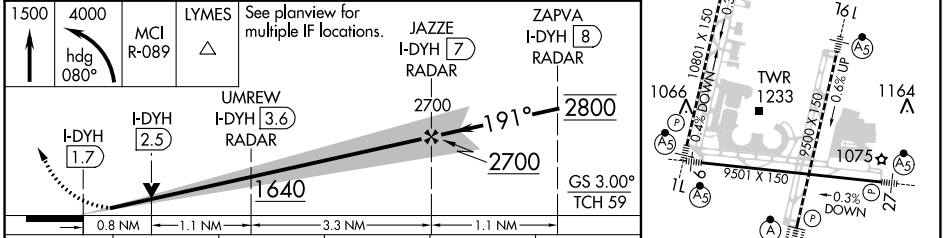
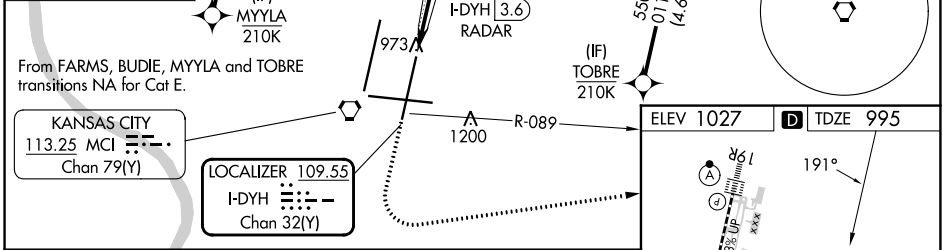
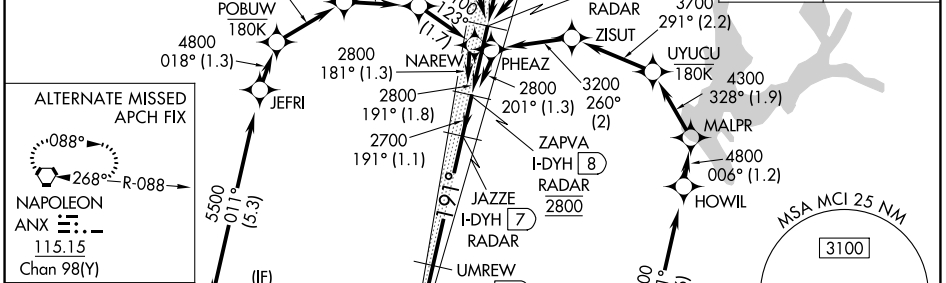
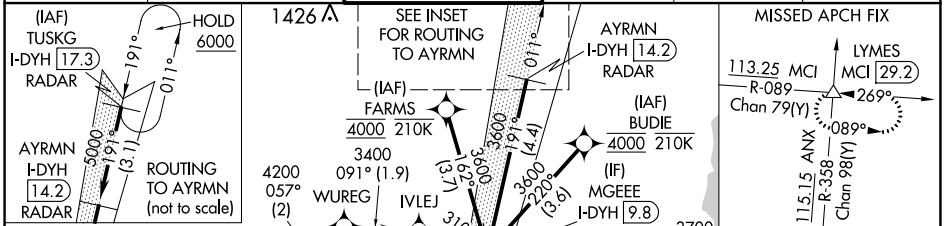
LOC/DME I-DYH <b>109.55</b> Chan <b>32</b> (Y)	APP CRS <b>191°</b>	Rwy Idg <b>9500</b> TDZE <b>995</b> Apt Elev <b>1027</b>
--	------------------------	--

# ILS or LOC RWY 19L

KANSAS CITY INTL (MCI)

RNP APCH - GPS. From FARMS or BUDIE or MYLLA or TOBRE.	MALSR	MISSED APPROACH: Climb to 1500 then climbing left turn to 4000 on heading 080° and MCI VORTAC R-089 to LYMES INT/ MCI 29.2 DME and hold.
DME or RADAR required. RADAR required for procedure entry at TUSKG.		
For inop ALS, increase S-ILS 19L Cat E visibility to RVR 4000 and S-LOC 19L Cat C/D/E visibility to RVR 4500. Simultaneous approach authorized except from BUDIE, FARMS, TOBRE, and MYLLA.		

D-ATIS <b>128.375</b>	KANSAS CITY APP CON <b>120.95 318.1</b>	INTERNATIONAL TOWER <b>128.2 254.25</b>	GND CON <b>121.8</b>	CLNC DEL <b>135.7</b>	CPDLC
--------------------------	--	--	-------------------------	--------------------------	-------



ELEV 1027	TDZE 995					
1500	4000	MCI R-089	LYMES	See planview for multiple IF locations.	JAZZE I-DYH 7	ZAPVA I-DYH 8
hdg 080°						
UMREW I-DYH 3.6	2700	191°	2800			
I-DYH 1.7	I-DYH 2.5					
0.8 NM	1.1 NM	3.3 NM	1.1 NM			
GS 3.00°	TCH 59					
CATEGORY	A	B	C	D	E	
S-ILS 19L		1195/18	200 (200-½)			
S-LOC 19L		1280/24	285 (300-½)			
CIRCLING	1540-1	513 (600-1)	1540-1½ 513 (600-1½)	1580-2	553 (600-2)	

HIRL all Rwy's	TDZ/CL Rwy's 1L, 1R, 19L and 19R
FAF to MAP 5.2 NM	
Knots	60 90 120 150 180
Min:Sec	5:12 3:28 2:36 2:05 1:44

NC-3, 11 JUL 2024 to 08 AUG 2024

NC-3, 11 JUL 2024 to 08 AUG 2024