

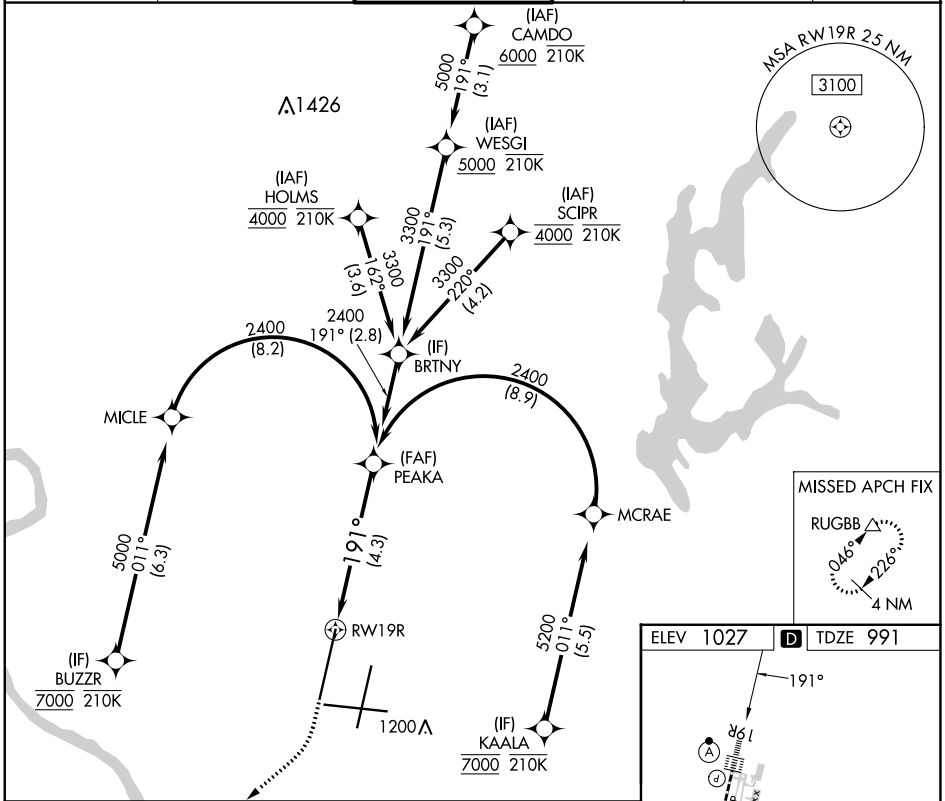
APP CRS 191°	Rwy Idg 10801
	TDZE 991
	Apt Elev 1027

RNAV (RNP) Z RWY 19R

KANSAS CITY INTL (MCI)

RADAR required for procedure entry. RNP AR APCH - GPS.		ALSF-2 	MISSED APPROACH: Climb to 2000 then climbing right turn to 4000 direct RUGBB and hold.
<p>▼ For uncompensated Baro-VNAV systems, procedure NA below -21°C or above 54°C. Simultaneous approach authorized, except for arrivals at BUZZR, HOLMS, SCIPR, and KAALA. For inop ALS, increase RNP 0.15 all Cats visibility to RVR 4500 and RNP 0.30 all Cats visibility RVR 6000.</p>			

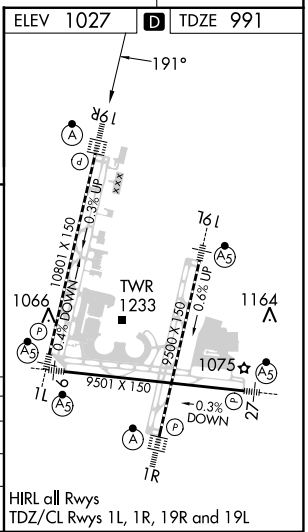
D-ATIS 128.375	KANSAS CITY APP CON 120.95 318.1	INTERNATIONAL TOWER 128.2 254.25	GND CON 121.8	CLNC DEL 135.7	CPDLC
--------------------------	--	--	-------------------------	--------------------------	-------



NC-3, 11 JUL 2024 to 08 AUG 2024

NC-3, 11 JUL 2024 to 08 AUG 2024

2000	4000	RUGBB	See planview for multiple IF locations. VGSI and RNAV glidepath not coincident (VGSI Angle 3.00/TCH 80).	PEAKA 2400
RWY 19R		GP 3.00° TCH 55		
4.3 NM				
CATEGORY	A	B	C	D
RNP 0.15 DA		1287/24	296 (300-1/2)	
RNP 0.30 DA		1405/40	414 (400-3/4)	
AUTHORIZATION REQUIRED				



HIRL all Rws
TDZ/CL Rws 1L, 1R, 19R and 19L