

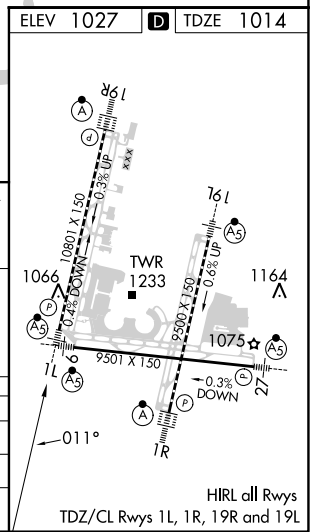
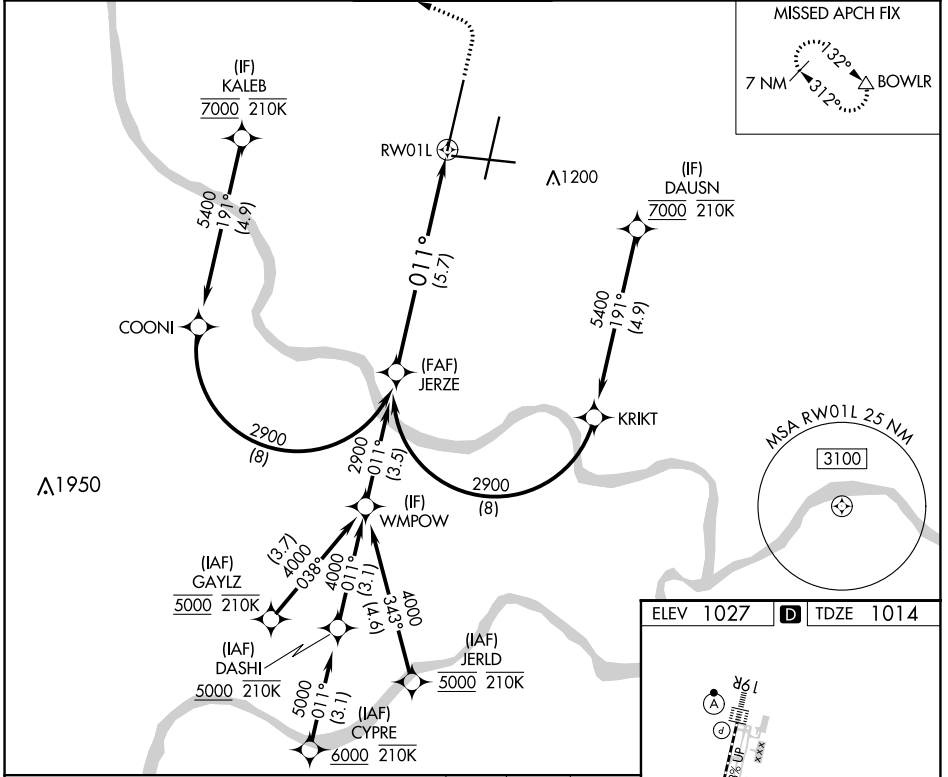
APP CRS	Rwy Idg	10801
011°	TDZE	1014
	Apt Elev	1027

RNAV (RNP) Z RWY 1L

KANSAS CITY INTL (MCI)

RNP AR APCH - GPS.		MALSR	MISSED APPROACH: Climb to 2000 then climbing left turn to 4000 direct BOWL R and hold.
<p>▼ Use of FD or AP required during simultaneous operations. For uncompensated Baro-VNAV systems, procedure NA below -19°C or above 54°C. For inop ALS, increase RNP 0.10 all Cats visibility to RVR 4000 and RNP 0.30 all Cats visibility to RVR 6000. Simultaneous approach authorized, except for arrivals at KALEB, DAUSN, GAYLZ and JERLD.</p>			

D-ATIS	KANSAS CITY APP CON	INTERNATIONAL TOWER	GND CON	CLNC DEL	CPDLC
128.375	120.95 318.1	128.2 254.25	121.8	135.7	



VGSI and RNAV glidepath not coincident (VGSI Angle 3.00/TCH 78).

2000	4000	BOWL R
↑	↻	△

GP 3.00° TCH 57

See planview for multiple IF locations.

CATEGORY	A	B	C	D
RNP 0.10 DA		1264/24	250 (300-½)	
RNP 0.30 DA		1418/40	404 (400-¾)	

AUTHORIZATION REQUIRED

NC-3, 11 JUL 2024 to 08 AUG 2024

NC-3, 11 JUL 2024 to 08 AUG 2024