

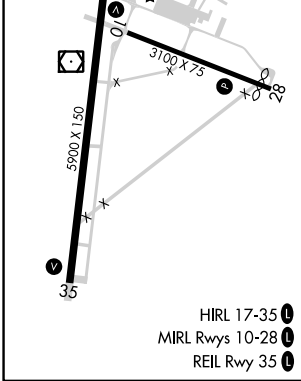
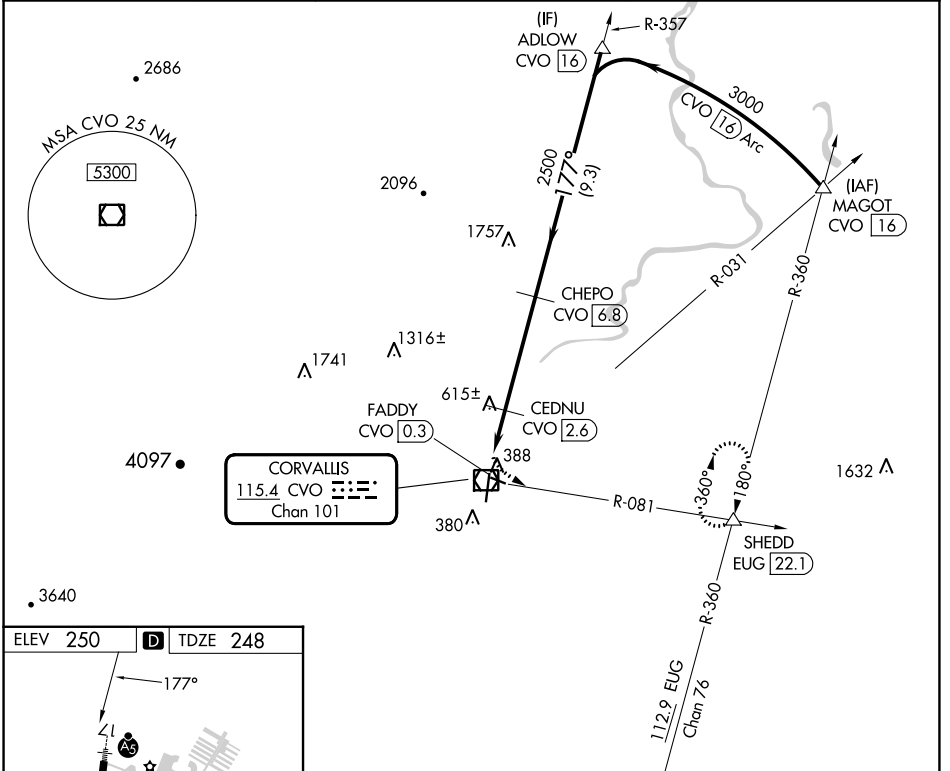
VOR/DME CVO <b>115.4</b> Chan <b>101</b>	APP CRS <b>177°</b>	Rwy Idg TDZE Apt Elev	<b>5900</b> <b>248</b> <b>250</b>
--	------------------------	-----------------------------	---

# VOR RWY 17

CORVALLIS MUNI (CVO)

DME required.	MALSRR 	MISSED APPROACH: Climbing left turn to 3000 on CVO VOR/DME R-081 to SHEDD INT/EUG 22.1 DME and hold, continue climb-in-hold to 3000.
Circling Rwy 28 NA at night. When local altimeter setting not received, procedure NA. For inop ALS, increase S-17 Cat C/D visibility to 1 3/4 SM.		

AWOS-3PT <b>135.775</b>	CASCADE APP CON * <b>127.5 348.7</b>	UNICOM <b>123.075 (CTAF)</b>
----------------------------	---	---------------------------------



Profile view details: 3000 SHEDD VGS1 and descent angles not coincident (VGS1 Angle 3.00/TCH 45), ADLOW CVO 16, CHEPO CVO 6.8, CEDNU CVO 2.6, CVO VOR/DME FADDY CVO 0.3, CVO 2.1, 3.20° TCH 50, 1100, 2500, 177°, 3000, 1.8 NM, 0.6, 4.1 NM, 9.3 NM.

CATEGORY	A	B	C	D
S-17	880-1/2	632 (700-1/2)	880-1 3/8	632 (700-1 3/8)
CIRCLING	880-1	630 (700-1)	920-1 3/4	1080-2 3/4
			670 (700-1 3/4)	830 (900-2 3/4)

NW-1, 11 JUL 2024 to 08 AUG 2024

NW-1, 11 JUL 2024 to 08 AUG 2024