

LOC I- BLF 109.5	APP CRS 229°	Rwy Idg 4743 TDZE 2857 Apt Elev 2857
-----------------------------------	------------------------	---

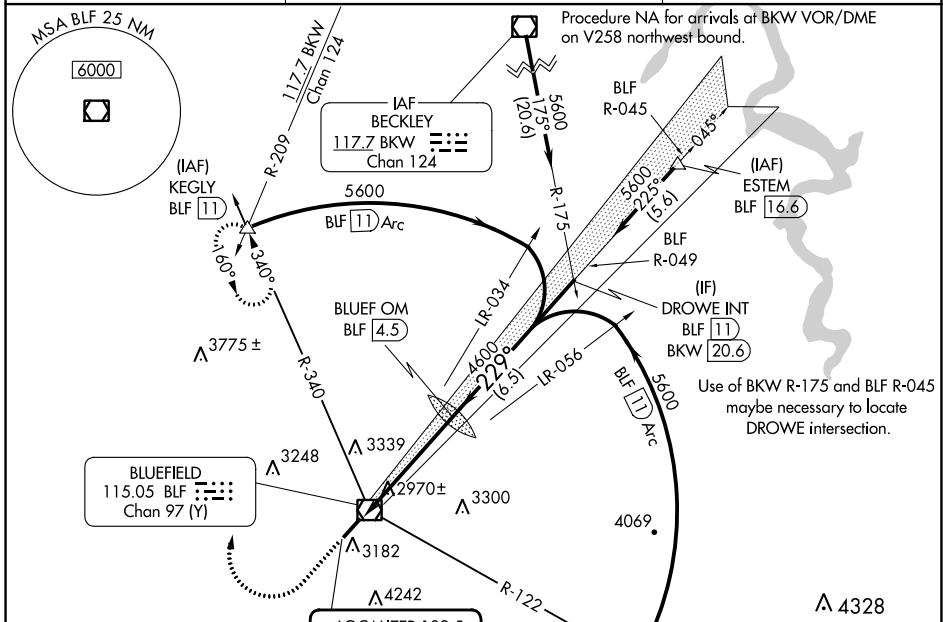
ILS or LOC RWY 23

MERCER COUNTY (BLF)

⚠ Autopilot coupled approach NA below 3600 MSL. When local altimeter setting not received, use Beckley altimeter setting and increase DA to 3600 feet and visibility to 2½ SM; increase all MDAs 460 feet and S-LOC 23 Cat A visibility to 1¼ SM, Cat B to 1½ SM and Cats C and D to 3 SM; increase Circling visibility Cat A to 1¼ SM, Circling Cat B to 1½ SM, Circling Cat C to 3 SM. Circling NA southeast of Rwy 5-23.

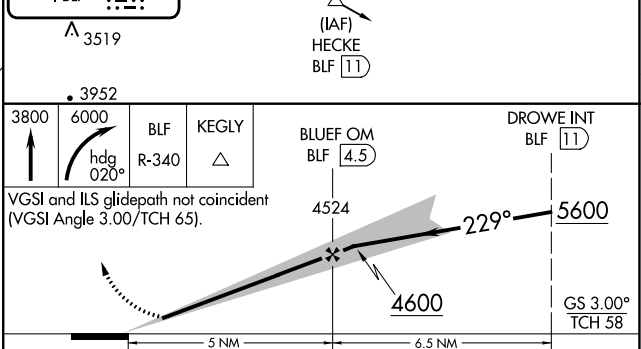
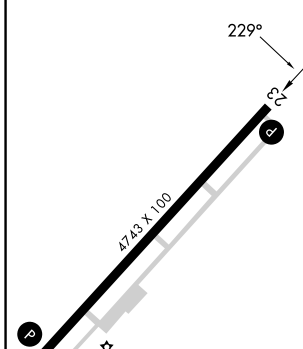
MISSED APPROACH: Climb to 3800 then climbing right turn to 6000 on heading 020° and BLF VOR/DME R-340 to KEGLY INT/BLF 11 DME and hold.

ASOS 132.725	INDIANAPOLIS CENTER 126.575 257.85	CTAF 122.9
------------------------	--	----------------------



ELEV 2857	D TDZE 2857
-----------	--------------------

LOCALIZER 109.5 I-BLF



CATEGORY	A	B	C	D
S-ILS 23	3157-1	300 (300-1)		3157- ⁷ / ₈ 300 (300- ⁷ / ₈)
S-LOC 23	3520-1	663 (700-1)	3520-1 ³ / ₄ 663 (700-1 ³ / ₄)	3520-2 663 (700-2)
CIRCLING	3520-1	663 (700-1)	3640-2 ¹ / ₄ 783 (800-2 ¹ / ₄)	3780-3 923 (1000-3)

FAF to MAP 5 NM					
Knots	60	90	120	150	180
Min:Sec	5:00	3:20	2:30	2:00	1:40

NE-4, 11 JUL 2024 to 08 AUG 2024

NE-4, 11 JUL 2024 to 08 AUG 2024