

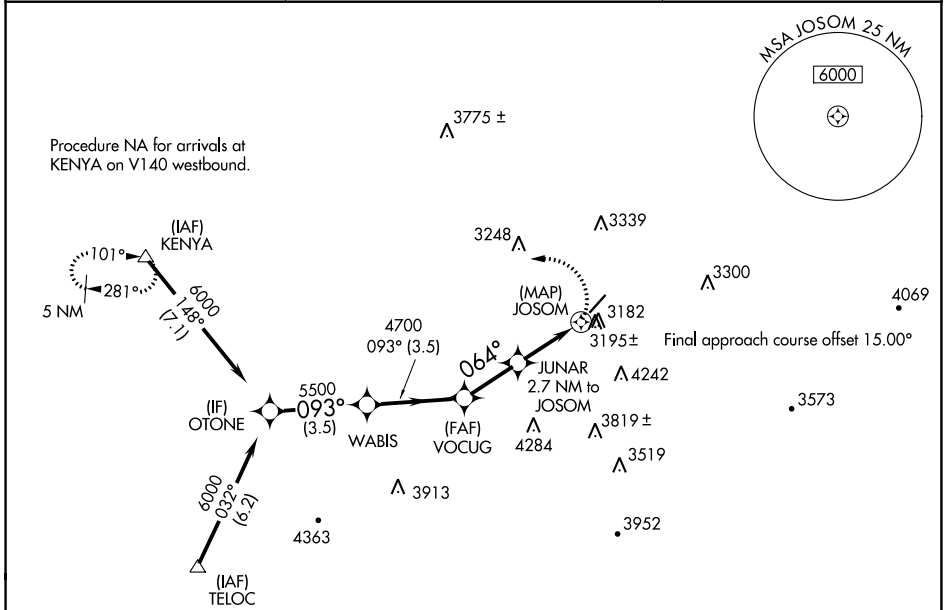
APP CRS <b>064°</b>	Rwy Idg <b>4743</b>
	TDZE <b>2850</b>
	Apt Elev <b>2857</b>

# RNAV (GPS) RWY 5

MERCER COUNTY (BLF)

RNP APCH.	MISSED APPROACH: Climbing left turn to 6000 direct KENYA and hold.
<p>Procedure NA at night. Rwy 5 helicopter visibility reduction below 1 SM NA.</p>	

ASOS <b>132.725</b>	INDIANAPOLIS CENTER <b>126.575 257.85</b>	CTAF <b>122.9</b>
------------------------	--	----------------------



NE-4, 11 JUL 2024 to 08 AUG 2024

NE-4, 11 JUL 2024 to 08 AUG 2024

	ELEV 2857	TDZE 2850															
OTONE	WABIS	VOCUG															
6000	5500	4700															
093°	3.10°	064°															
3.5 NM	3.5 NM	2.3 NM															
3940	JUNAR 2.7 NM to JOSOM	JOSOM															
3.5 NM	2.3 NM	2.7 NM															
0.5 NM																	
6000	KENYA																
VGSIs and descent angles not coincident (VGSIs Angle 3.00/TCH 40).																	
<table border="1"> <tr> <th>CATEGORY</th> <th>A</th> <th>B</th> <th>C</th> <th>D</th> </tr> <tr> <td>LNAV MDA</td> <td>3560-1</td> <td>710 (800-1)</td> <td>3560-2</td> <td>3560-2 1/4</td> </tr> <tr> <td></td> <td></td> <td></td> <td>710 (800-2)</td> <td>710 (800-2 1/4)</td> </tr> </table>			CATEGORY	A	B	C	D	LNAV MDA	3560-1	710 (800-1)	3560-2	3560-2 1/4				710 (800-2)	710 (800-2 1/4)
CATEGORY	A	B	C	D													
LNAV MDA	3560-1	710 (800-1)	3560-2	3560-2 1/4													
			710 (800-2)	710 (800-2 1/4)													

