

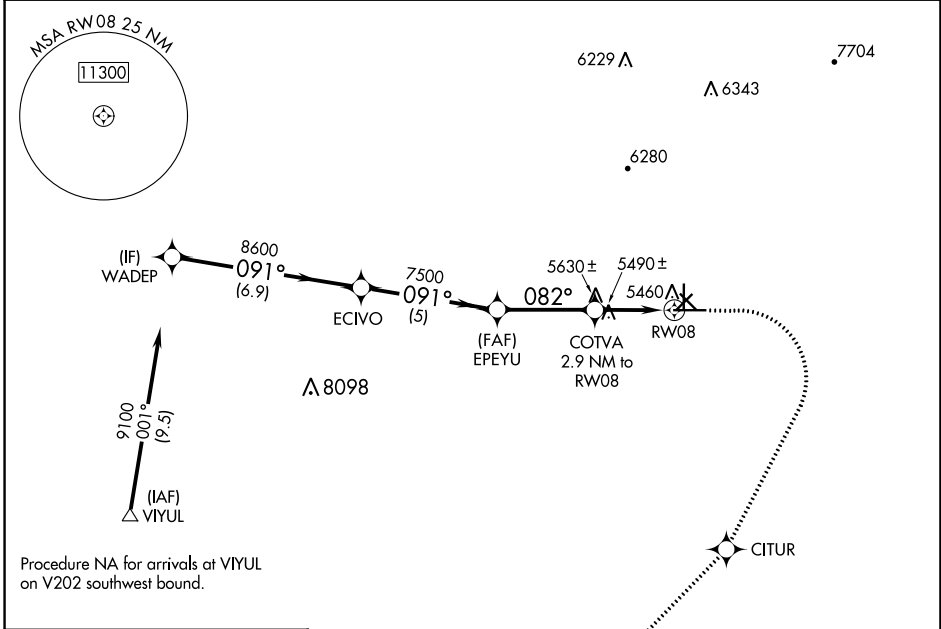
APP CRS	Rwy Idg	6803
082°	TDZE	5386
	Apt Elev	5446

RNAV (GPS) RWY 8

GRANT COUNTY (SVC)

RNP APCH-GPS.	MISSED APPROACH: Climb to 5900 then climbing right turn to 10000 direct CITUR and on track 216° to KUNRE and hold.
<p>▼</p> <p>▲</p> <p>Rwy 8 helicopter visibility reduction below 3/4 SM NA.</p>	

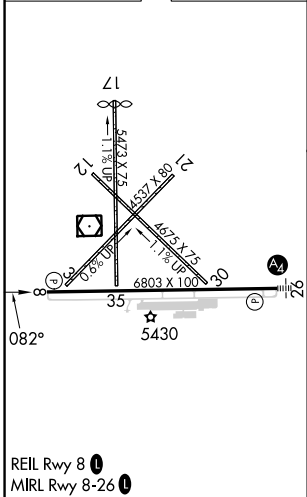
AWOS-3 126.725	ALBUQUERQUE CENTER 134.45 327.15	UNICOM 122.8 (CTAF) 0
--------------------------	--	---------------------------------



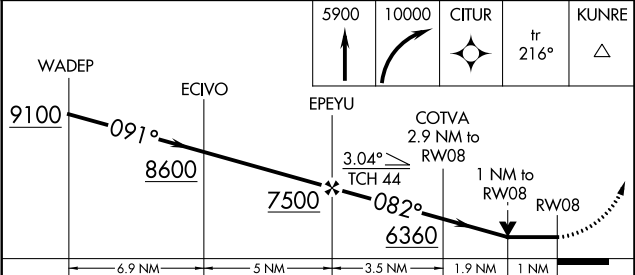
SW-1, 11 JUL 2024 to 08 AUG 2024

SW-1, 11 JUL 2024 to 08 AUG 2024

ELEV 5446	TDZE 5386
-----------	-----------



MISSED APCH FIX				
078°	▲	KUNRE		
258°	▲		7 NM	



CATEGORY	A	B	C	D
LNAV MDA	5740-1 354 (300-1)			