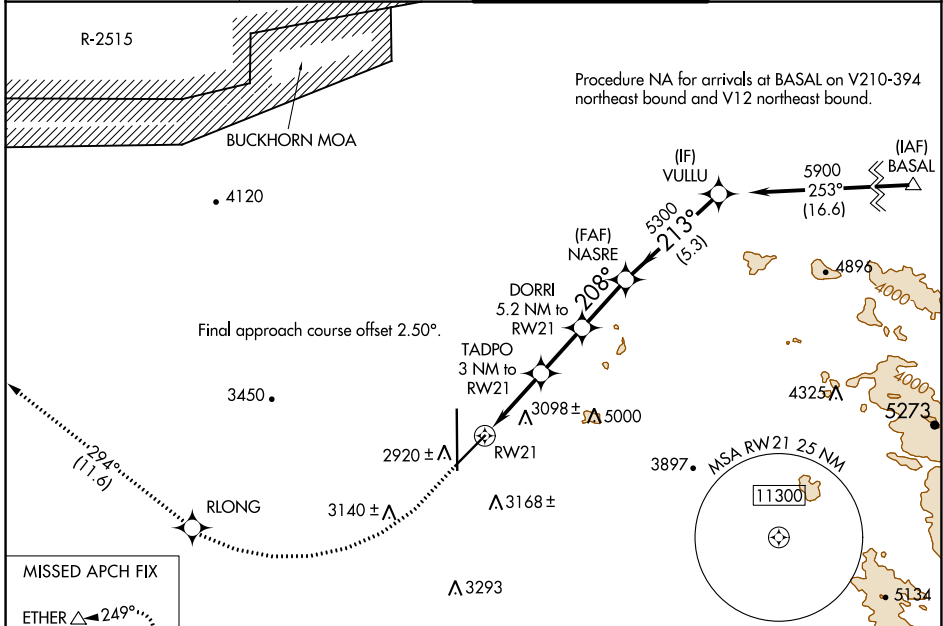


WAAS CH <b>82246</b> W <b>21A</b>	APP CRS <b>208°</b>	Rwy Idg TDZE Apt Elev	<b>9138</b> <b>2858</b> <b>2885</b>
---	------------------------	-----------------------------	---

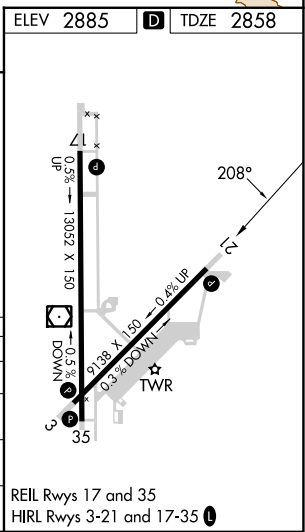
# RNAV (GPS) RWY 21

SOUTHERN CALIFORNIA LOGISTICS (VCV)

RNP APCH - GPS.		MISSED APPROACH: Climb to 3500 then climbing right turn to 6000 direct RLONG and on track 294° to ETHER and hold.	
<p>⚠ Circling NA for C and D southeast of Rwsy 35 and 21. ⚠ For uncompensated Baro-VNAV systems, LNAV/VNAV NA below -20°C or above 54°C.</p>	<p>ATIS ★ <b>135.475</b></p>	<p>JOSHUA APP CON <b>124.55 363.0</b></p>	<p>VICTORVILLE TOWER ★ <b>118.35 (CTAF) 282.225</b></p>
		<p>GND CON <b>124.45</b></p>	



ELEV 2885		D TDZE 2858	
3500	6000	RLONG	ETHER
VGSI and RNAV glidepath not coincident (VGSI Angle 3.00/TCH 85).			
<p>↑ 3500</p> <p>↘ 6000</p> <p>⬠ tr 294°</p> <p>⚠</p>		<p>VULLU</p> <p>NASRE</p> <p>TADPO 3 NM to RW21</p> <p>DORRI 5.2 NM to RW21</p> <p>5300</p> <p>5900</p> <p>213°</p> <p>208°</p> <p>4560</p> <p>5300</p> <p>GP 3.00°</p> <p>TCH 60</p>	
<p>1.7 NM to RW21</p> <p>1.7 NM</p> <p>1.3 NM</p> <p>2.2 NM</p> <p>2.3 NM</p> <p>5.3 NM</p>		<p>3860</p> <p>3108-1</p> <p>250 (300-1)</p> <p>3153-1</p> <p>295 (300-1)</p> <p>3480-1</p> <p>622 (600-1)</p> <p>3480-1¾</p> <p>622 (600-1¾)</p> <p>3480-1¾</p> <p>595 (600-1)</p> <p>3480-1¾</p> <p>595 (600-1¾)</p> <p>3760-2¾</p> <p>875 (900-2¾)</p>	
CATEGORY	A	B	D
LPV DA	3108-1 250 (300-1)		
LNAV/VNAV DA	3153-1 295 (300-1)		
LNAV MDA	3480-1 622 (600-1) 3480-1¾ 622 (600-1¾)		
CIRCLING	3480-1 595 (600-1) 3480-1¾ 595 (600-1¾) 3760-2¾ 875 (900-2¾)		



SW-3, 11 JUL 2024 to 08 AUG 2024

SW-3, 11 JUL 2024 to 08 AUG 2024