

APP CRS	Rwy Idg	7100
239°	TDZE	2552
	Apt Elev	2567

RNAV (GPS) Y RWY 23

PULLMAN/MOSCOW RGNL (PUW)

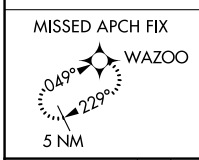
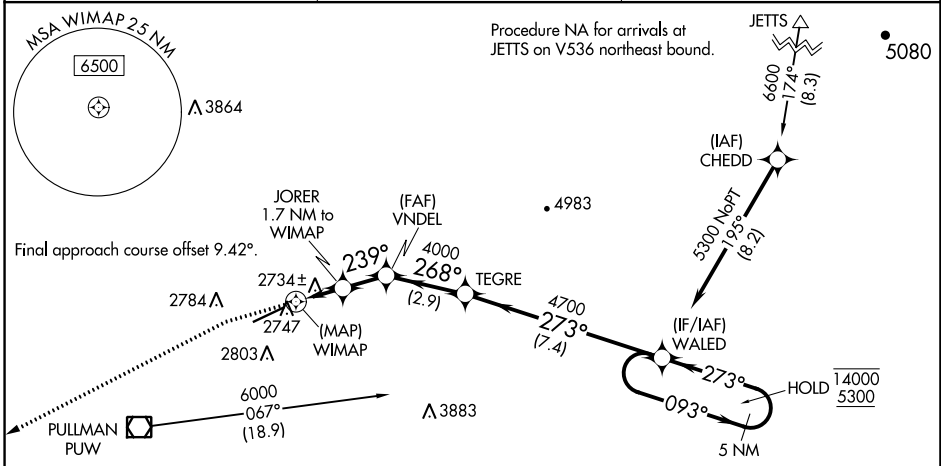
RNP APCH-GPS.

▼ Rwy 23 helicopter visibility reduction below 1 SM NA. Straight-in

▲ Rwy 23 at night, operational VGSI required, remain on or above VGSI glidepath until threshold.

MISSED APPROACH: Climb to 3500 then climbing left turn to 5000 direct WAZOO and hold.

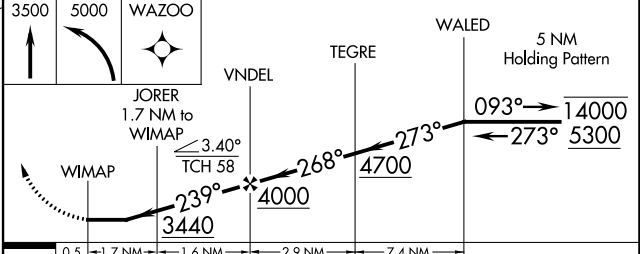
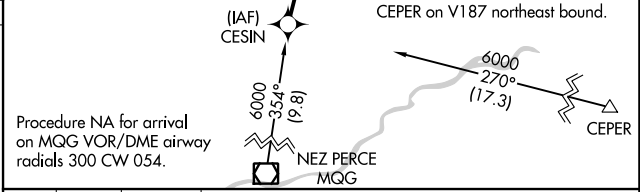
ASOS 135.675	SEATTLE CENTER 123.95 290.55	UNICOM 122.8 (CTAF) 0
------------------------	--	---------------------------------



Λ 3565

Procedure NA for arrival on PUW VOR/DME airway radials 033 CW 120.

ELEV 2567	D	TDZE 2552
-----------	----------	-----------



REIL Rwy 23 0	HIRL Rwy 5-23 0			
CATEGORY	A	B	C	D
LNAV MDA	3000-1	448 (500-1)	3000-1 3/8	448 (500-1 3/8)

NW-1, 11 JUL 2024 to 08 AUG 2024

NW-1, 11 JUL 2024 to 08 AUG 2024