

WAAS CH 50221 W23A	APP CRS 233°	Rwy Idg TDZE 124 Apt Elev 125	5502
--	------------------------	---	-------------

RNAV (GPS) RWY 23

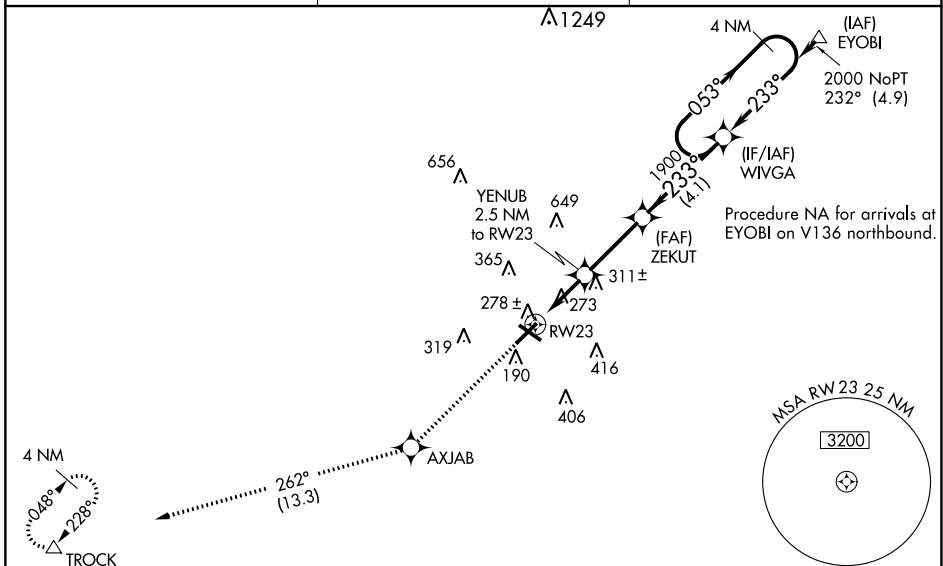
LUMBERTON RGNL (LBT)

RNP APCH - GPS.

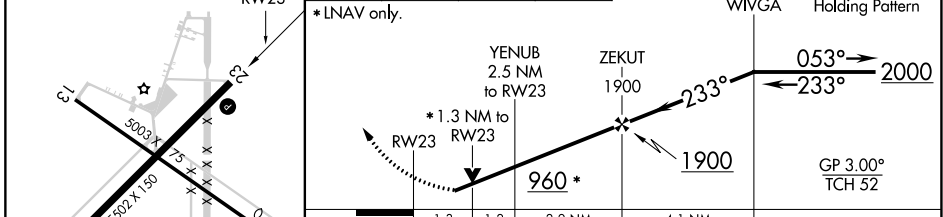
⚠ Rwy 23 helicopter visibility reduction below 3/4 SM NA. When local altimeter setting not received, use Maxton altimeter setting; increase LPV DA to 469 feet and all visibility 1/8 SM; LNAV/VNAV DA to 495 feet and all visibility 1/8 SM; increase all MDAs 60 feet and Circling visibility Cat C 1/4 SM. Baro-VNAV and VDP NA when using Maxton altimeter setting. Circling to Rwy 13 and 31 NA at night. For uncompensated Baro-VNAV systems, LNAV/VNAV NA below -15°C or above 54°C.

MISSED APPROACH:
Climb to 2200 direct AXJAB and on track 262° to TROCK and hold.

ASOS 134.775	FAYETTEVILLE APP CON 133.0 290.25	UNICOM 122.8 (CTAF) 0
------------------------	---	---------------------------------



ELEV 125	TDZE 124	2200	AXJAB	tr 262°	TROCK	VGSI and RNAV glidepath not coincident (VGSI Angle 3.20/TCH 45).
----------	----------	------	-------	---------	-------	--



CATEGORY	A	B	C	D
LPV DA	413-7/8	289 (300-7/8)		NA
LNAV/VNAV DA	439-7/8	315 (400-7/8)		NA
LNAV MDA	580-1	456 (500-1)	580-1 3/8 456 (500-1 3/8)	NA
CIRCLING	660-1	535 (600-1)	720-1 1/2 595 (600-1 1/2)	NA

MIRL Rwy 5-23 0
REIL Rwy 5 and 23 0

SE-2, 11 JUL 2024 to 08 AUG 2024

SE-2, 11 JUL 2024 to 08 AUG 2024