

LOC I-SLK 108.9	APP CRS 229°	Rwy Idg TDZE Apt Elev	6333 1663 1663
---------------------------	------------------------	-----------------------------	---

ILS or LOC RWY 23

ADIRONDACK RGNL (SLK)

DME required.
RNAV 1-GPS required.

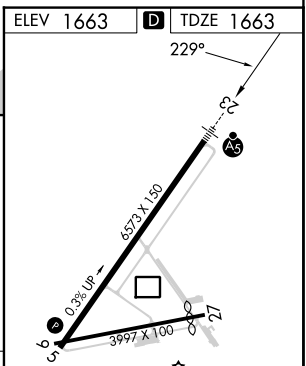
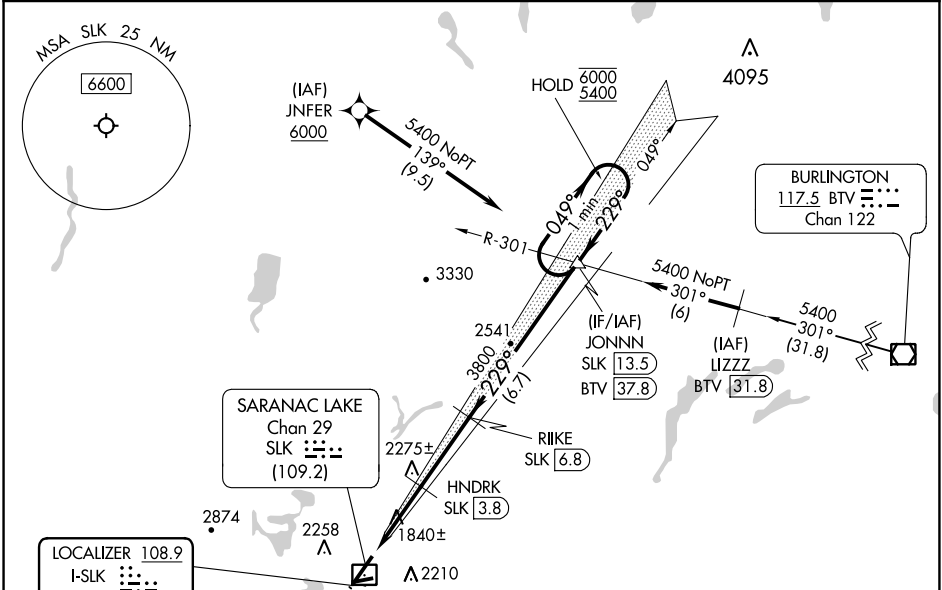
MALSR

MISSED APPROACH: Climb to 3500 then climbing right turn to 5400 direct JONNN and hold.

WIND: -29°C

Circling Rwy 5, 9, 27 NA at night. DME from SLK DME. Simultaneous reception of I-SLK and SLK DME required. LOC only Rwy 23 helicopter visibility reduction below 3/4 SM NA. For inop ALS, increase S-LOC 23 Cat A/B visibility to 1 SM.

ASOS 124.175	BOSTON CENTER 120.35 342.25	UNICOM 123.0 (CTAF)
------------------------	---------------------------------------	-------------------------------



3500	5400	JONNN	
*LOC only.		HNDRK SLK [3.8]	RIIKE SLK [6.8]
SLK [0.7]	*SLK [2.1]	3800	049° → 6000
		*2760	← 229° 5400
		3800	GS 3.20° TCH 60
CATEGORY	A	B	C
S-ILS 23	1863-1/2		200 (200-1/2)
S-LOC 23	2200-3/4	537 (600-3/4)	2200-1 537 (600-1)
CIRCLING	2500-1 1/4 837 (900-1 1/4)	2660-1 1/2 997 (1000-1 1/2)	2660-3 1037 (1100-3)

HIRL Rwy 5-23	MIRL Rwy 9-27
---------------	---------------

NE-2, 11 JUL 2024 to 08 AUG 2024

NE-2, 11 JUL 2024 to 08 AUG 2024