

| | | |
|--|------------------------|---|
| WAAS CH 72925 W04A | APP CRS 035° | Rwy Idg TDZE 2380 Apt Elev 2380 |
|--|------------------------|---|

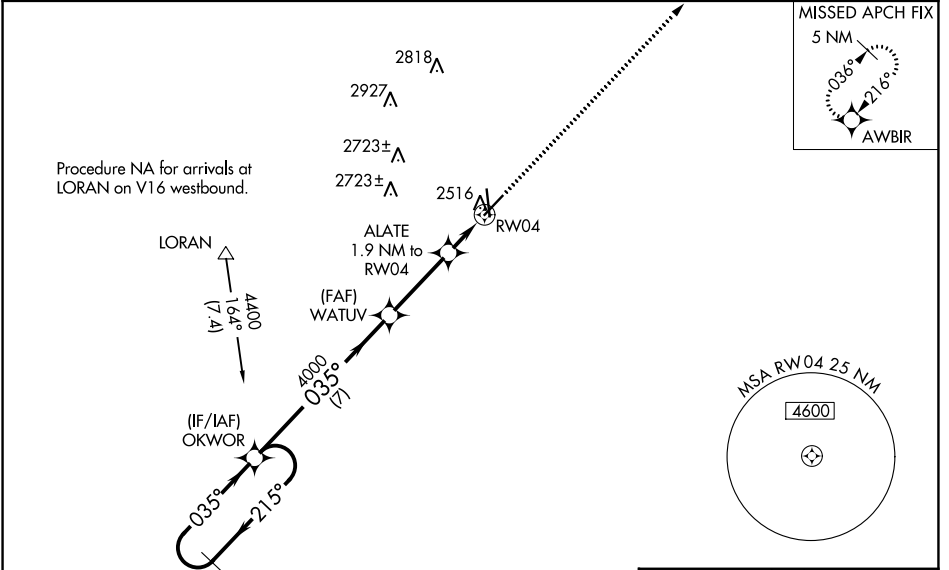
RNAV (GPS) RWY 4

AVENGER FLD (SWW)

⚠ Baro-VNAV NA when using Snyder altimeter setting. For uncompensated Baro-VNAV systems, LNAV/VNAV NA below -19°C (-2°F) or above 29°C (84°F). DME/DME RNP-0.3 NA. Visibility reduction by helicopters NA. When local altimeter setting not received, use Snyder altimeter setting and increase LPV DA to 2702 feet and LNAV/VNAV DA to 2799 feet, and all MDAs 80 feet; increase LPV visibility all Cats 1/8 SM, LNAV/VNAV visibility all Cats 1/4 SM, LNAV visibility Cats C/D 1/8 SM, and Circling Cats C/D visibility 1/4 SM. When VGSI inop, Straight-in/ Circling Rwy 4 procedure NA at night. When VGSI inop, Circling Rwy 17 and 22 NA at night.

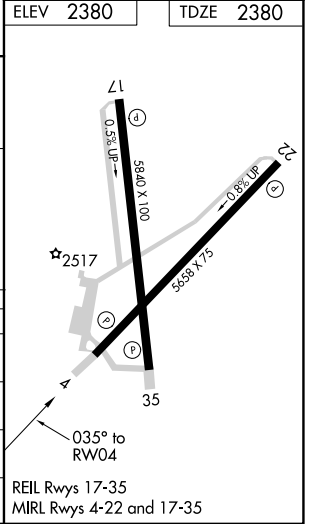
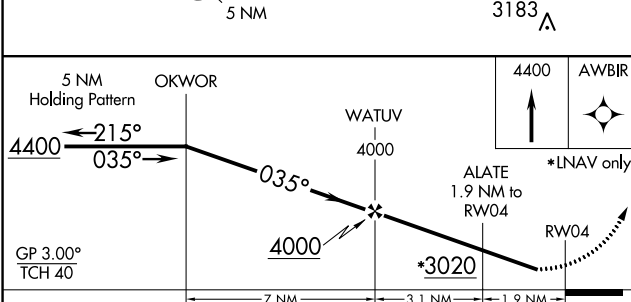
MISSED APPROACH:
Climb to 4400 direct AWBIR and hold.

| | | |
|--------------------------|---------------------------------------|-------------------------------|
| AWOS-3 119.025 | ABILENE APP CON 127.2 282.3 | UNICOM 122.8 (CTAF) |
|--------------------------|---------------------------------------|-------------------------------|



SC-2, 11 JUL 2024 to 08 AUG 2024

SC-2, 11 JUL 2024 to 08 AUG 2024



| CATEGORY | A | B | C | D |
|--------------|------------|-------------|-----------------------|-------------------------------|
| LPV DA | 2630-1 | | 250 (300-1) | |
| LNAV/VNAV DA | 2727-1 1/8 | | 347 (400-1 1/8) | |
| LNAV MDA | 2820-1 | 440 (500-1) | 2820-1 1/4 | 440 (500-1 1/4) |
| CIRCLING | 2880-1 | 500 (500-1) | 3080-2 700 (700-2) | 3080-2 1/4 700 (700-2 1/4) |