

LOC I-CIU 110.3	APP CRS 157°	Rwy Idg 7203
		TDZE 799
		Apt Elev 799

ILS or LOC RWY 16

CHIPPEWA COUNTY INTL (CIU)

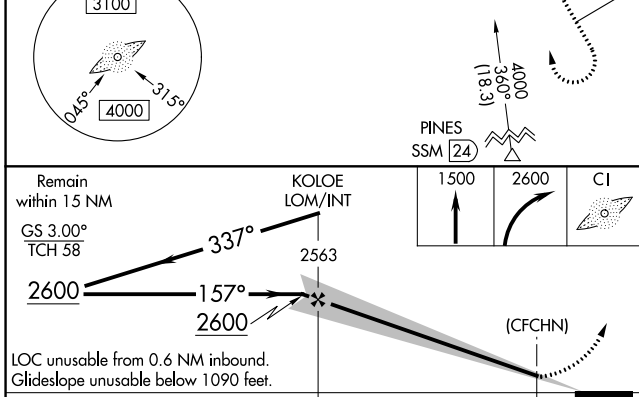
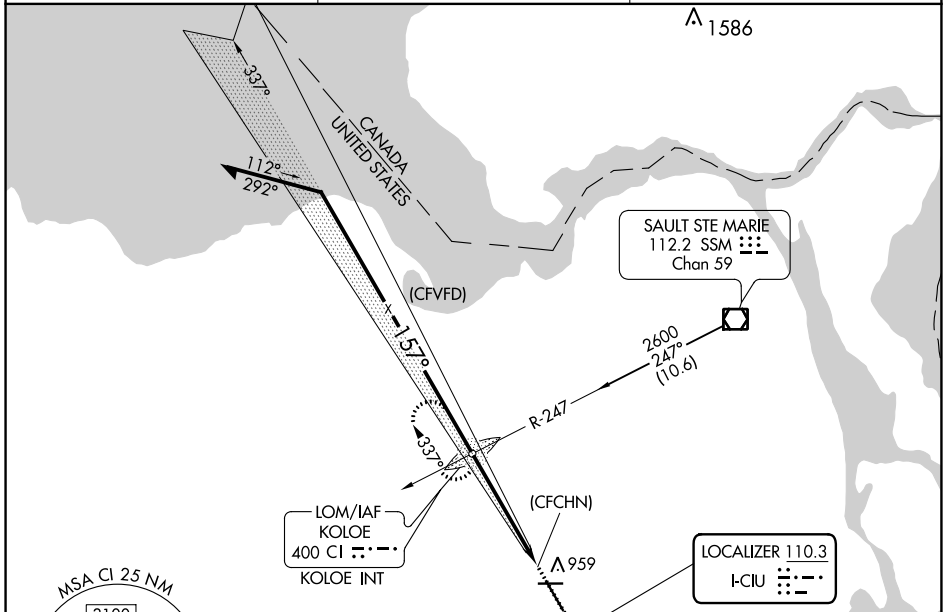
ADF required.

⚠ Autopilot coupled approach NA below 1380.
⚠ For inop ALS, increase S-ILS 16 visibility to 7/8 SM
 all Cats and S-LOC 16 Cat C/D/E to 1 SM.

MALSRL
A5

MISSED APPROACH: Climb to 1500 then climbing right turn to 2600 direct KOLOE LOM/INT and hold, continue climb-in-hold to 2600.

AWOS-3PT 127.575	TORONTO CENTER 132.65 344.5	UNICOM 123.0 (CTAF) 0
----------------------------	---------------------------------------	---------------------------------



ELEV 799	TDZE 799
----------	----------

REIL Rwys 10, 28 and 34
MRL Rwy 10-28
HIRL Rwy 16-34

FAF to MAP 4.7 NM					
Knots	60	90	120	150	180
Min:Sec	4:42	3:08	2:21	1:53	1:34

CATEGORY	A	B	C	D	E
S-ILS 16	1090-1/2 291 (300-1/2)				
S-LOC 16	1160-1/2	361 (400-1/2)	1160-5/8	361 (400-5/8)	
C CIRCLING	1260-1	461 (500-1)	1260-1 1/2	1360-2	1380-2
			461 (500-1 1/2)	561 (600-2)	581 (600-2)

EC-1, 11 JUL 2024 to 08 AUG 2024

EC-1, 11 JUL 2024 to 08 AUG 2024