

LOM CI 400	APP CRS 337°	Rwy Idg 7203
		TDZE 796
		Apt Elev 799

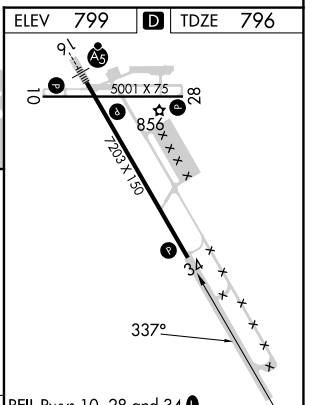
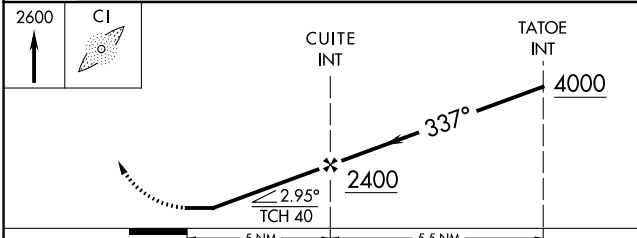
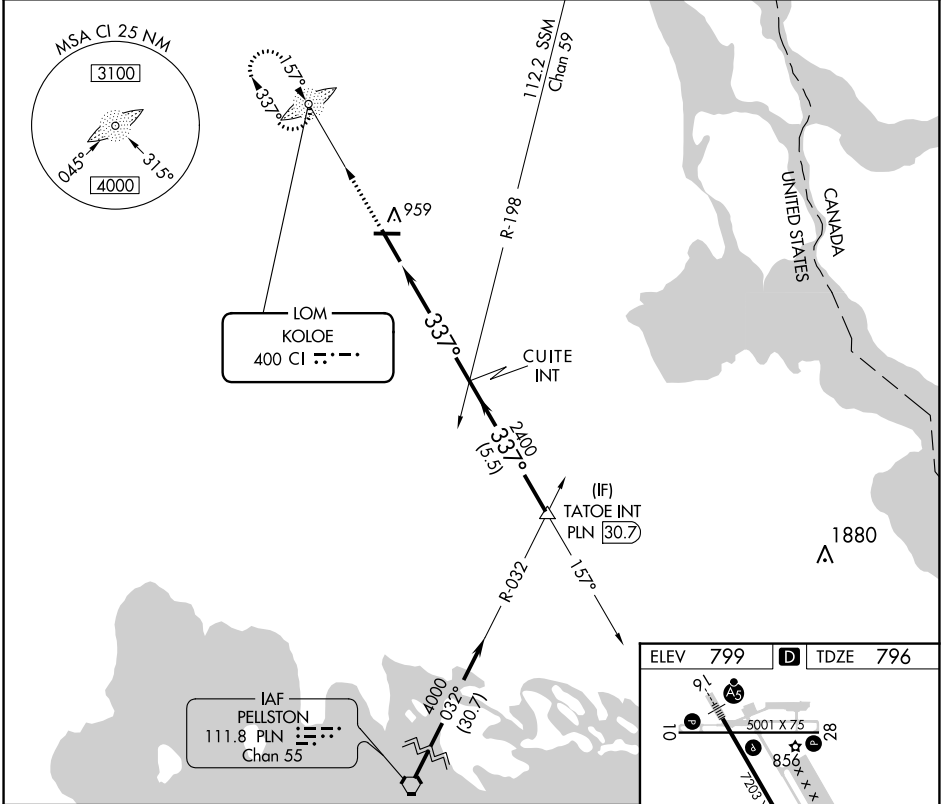
NDB RWY 34

CHIPPEWA COUNTY INTL (CIU)

⚠ NA When local altimeter setting not received, use Sault-Ste Marie Muni/Sanderson Fld altimeter setting and increase all MDA 60 feet and increase S-34 Cat C/D visibility to 1 3/8.

MISSED APPROACH: Climb to 2600 direct KOLOE LOM and hold.

AWOS-3PT 127.575	TORONTO CENTER 132.65 344.5	UNICOM 123.0 (CTAF)
----------------------------	---------------------------------------	-------------------------------



CATEGORY	A	B	C	D
S-34	1220-1 424 (500-1)		1220-1 1/4 424 (500-1 1/4)	
C CIRCLING	1260-1 461 (500-1)		1260-1 1/2 461 (500-1 1/2)	1360-2 561 (600-2)

REIL Rwys 10, 28 and 34

MIRL Rwy 10-28

HIRL Rwy 16-34

FAF to MAP 5 NM

Knots	60	90	120	150	180
Min:Sec	5:00	3:20	2:30	2:00	1:40

EC-1, 11 JUL 2024 to 08 AUG 2024

EC-1, 11 JUL 2024 to 08 AUG 2024