

WAAS CH <b>82008</b> <b>W28A</b>	APP CRS <b>280°</b>	Rwy Idg <b>8003</b> TDZE <b>196</b> Apt Elev <b>201</b>
--	------------------------	---

# RNAV (GPS) RWY 28

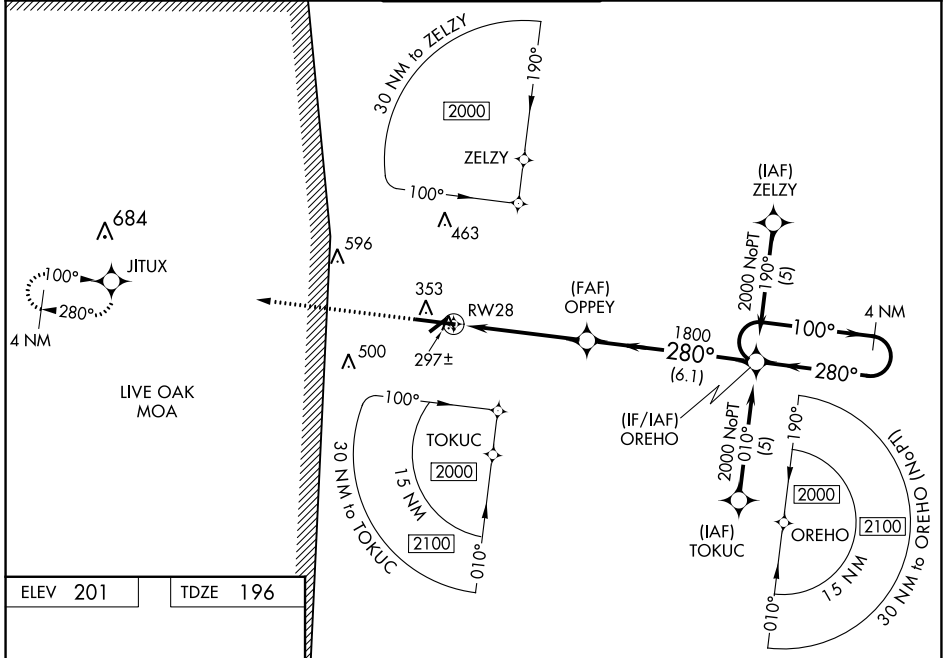
LAKE CITY GATEWAY (LCQ)

RNP APCH-GPS.

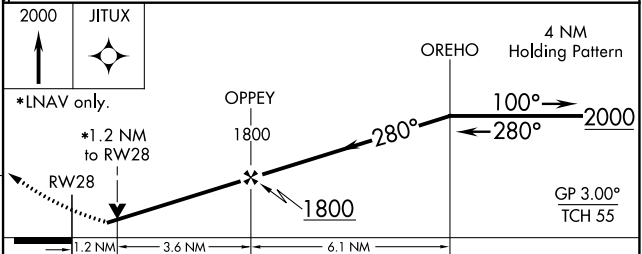
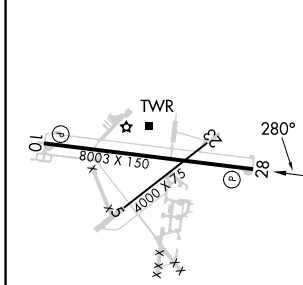
**▼** Baro-VNAV and VDP NA when using Gainesville altimeter setting. For uncompensated Baro-VNAV systems, LNAV/VNAV NA below -18°C or above 54°C. When local altimeter setting not received, use Gainesville altimeter setting: Increase LPV DA to 624 feet and all visibility ¼ SM; LNAV/VNAV DA to 640 feet and all visibility ⅓ SM; increase all MDAs 100 feet and LNAV visibility Cat C and D ¼ SM and Circling visibility Cat C ½ SM and Circling Cat D ¼ SM. Circling Rwy 10 NA at night. Rwy 13 helicopter visibility reduction below ¼ SM NA.

**MISSED APPROACH:**  
Climb to 2000 direct  
JITUX and hold.

AWOS-3 <b>120.675</b>	JACKSONVILLE CENTER <b>125.375 254.325</b>	LAKE CITY TOWER ★ <b>119.2 (CTAF) 0 314.6</b>	GND CON <b>121.9</b>	UNICOM <b>122.95</b>
--------------------------	---	--	-------------------------	-------------------------



ELEV 201	TDZE 196
----------	----------



CATEGORY	A	B	C	D
LPV DA		540-1	344 (400-1)	
LNAV/VNAV DA		556-1	360 (400-1)	
LNAV MDA	640-1	444 (500-1)	640-1 ⅔	444 (500-1 ⅓)
CIRCLING	760-1	559 (600-1)	780-1 ½ 579 (600-1 ½)	960-2 ½ 759 (600-2 ½)

REIL Rwy 10 and 28 **Ⓢ**  
MIRL Rwy 5-23 and 10-28 **Ⓢ**

SE-3, 11 JUL 2024 to 08 AUG 2024

SE-3, 11 JUL 2024 to 08 AUG 2024