

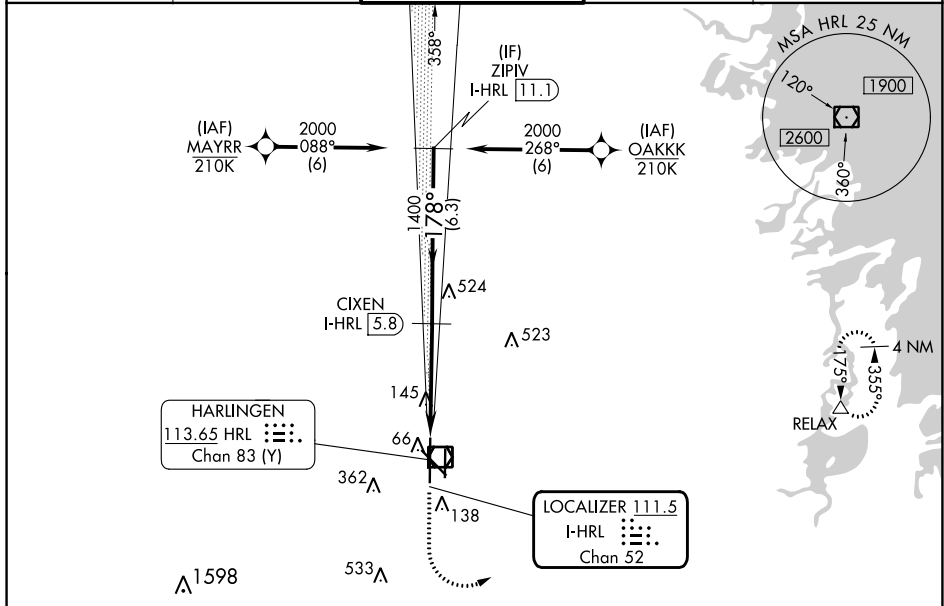
LOC/DME I-HRL <b>111.5</b> Chan <b>52</b>	APP CRS <b>178°</b>	Rwy Idg <b>9400</b> TDZE <b>35</b> Apt Elev <b>36</b>
---	------------------------	---

# ILS RWY 18R (SA CAT I & II)

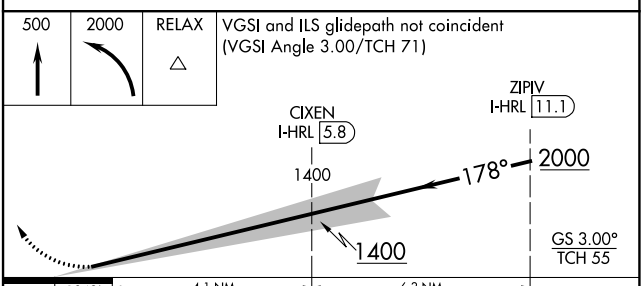
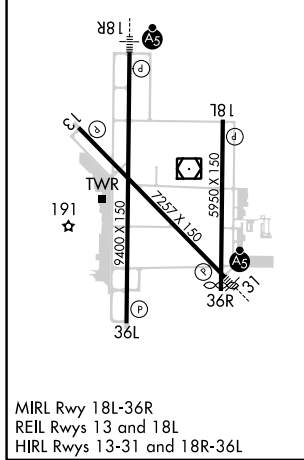
VALLEY INTL (HRL)

RNP APCH - GPS.		MALSR 	MISSED APPROACH: Climb to 500 then climbing left turn to 2000 direct RELAX and hold.
Requires specific OPSPEC, MSPEC, or LOA approval. Procedure NA when tower closed.			

ATIS <b>124.85</b>	VALLEY APP CON <b>120.7 279.5</b>	HARLINGEN TOWER ★ <b>119.3 (CTAF) 317.6</b>	GND CON <b>121.7</b>	UNICOM <b>122.95</b>
-----------------------	--------------------------------------	--	-------------------------	-------------------------



ELEV <b>36</b>	<b>D</b>	TDZE <b>35</b>
----------------	----------	----------------



	1.049	4.1 NM	6.3 NM	
CATEGORY	A	B	C	D
S-ILS 18R	SA CAT I	RA 153/14	150	DA 185
S-ILS 18R	SA CAT II	RA 104/12	100	DA 135

**CATEGORY I & II ILS - SPECIAL AIRCREW & AIRCRAFT CERTIFICATION REQUIRED**

SC-3, 11 JUL 2024 to 08 AUG 2024

SC-3, 11 JUL 2024 to 08 AUG 2024