


LOC/DME I-HRL <b>111.5</b> Chan <b>52</b>	APP CRS <b>178°</b>	Rwy Idg <b>9400</b> TDZE <b>35</b> Apt Elev <b>36</b>
---	------------------------	---

# ILS or LOC RWY 18R

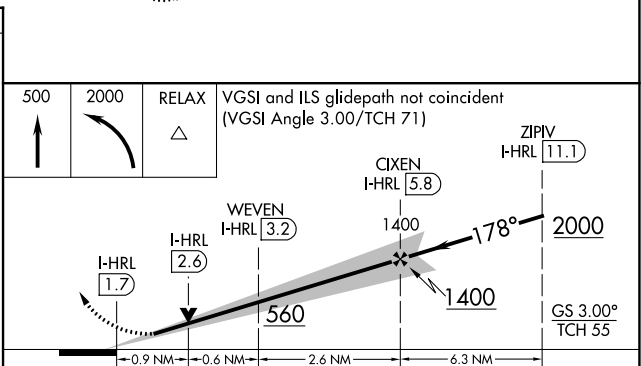
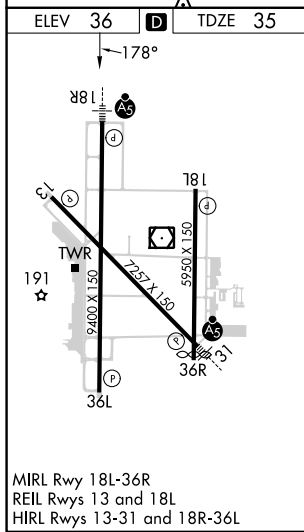
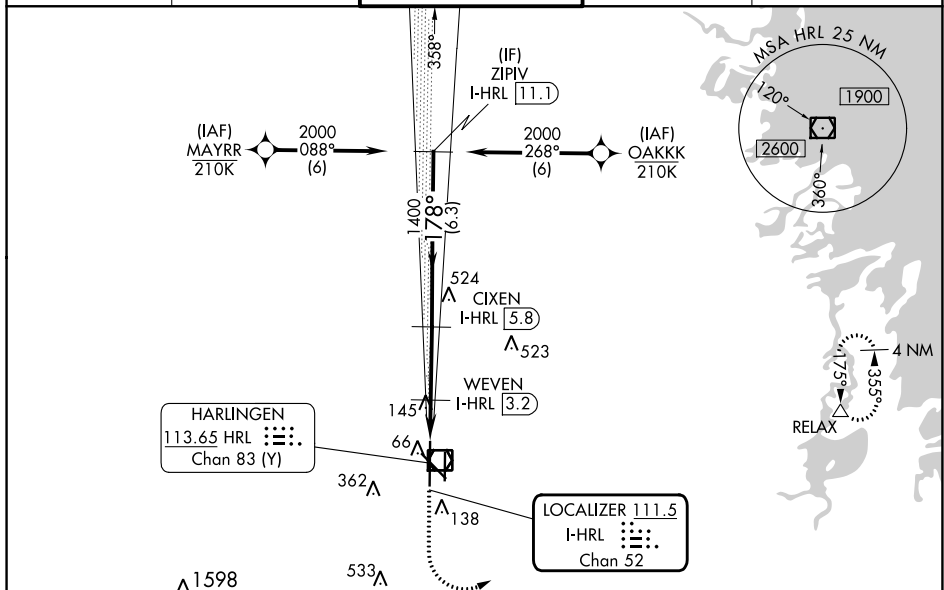
VALLEY INTL (H.R.L.)


RNP APCH - GPS.

⚠ When local altimeter setting not received, use Port Isabel altimeter setting: increase S-ILS 18R DA to 277 feet; increase all MDAs 60 feet and S-LOC 18R visibility Cat C/D to RVR 4000 and Circling Cat C/D ¼ SM. For inop ALS when using Port Isabel altimeter setting, increase S-LOC 18R visibility Cat C/D to RVR 5500. VDP NA when using Port Isabel altimeter setting.  
\*RVR 1800 authorized with use of FD or AP or HUD to DA. (NA when using secondary altimeter setting).

MALSR  MISSED APPROACH: Climb to 500 then climbing left turn to 2000 direct RELAX and hold.

ATIS <b>124.85</b>	VALLEY APP CON <b>120.7 279.5</b>	HARLINGEN TOWER ★ <b>119.3 (CTAF) 0 317.6</b>	GND CON <b>121.7</b>	UNICOM <b>122.95</b>
-----------------------	--------------------------------------	--	-------------------------	-------------------------



CATEGORY	A	B	C	D
S-ILS 18R*	235/24 200 (200-½)			
S-LOC 18R	400/24	365 (400-½)	400/35	365 (400-¾)
 CIRCLING	460-1 424 (500-1)	560-1 524 (600-1)	600-1½ 564 (700-1½)	680-2 644 (700-2)

SC-3, 11 JUL 2024 to 08 AUG 2024

SC-3, 11 JUL 2024 to 08 AUG 2024