

LOC/DME I-RVZ 111.5 Chan 52	APP CRS 358°	Rwy Idg 9400 TDZE 36 Apt Elev 36
-------------------------------------------------	------------------------	-------------------------------------------------------------

ILS or LOC RWY 36L

VALLEY INTL (HRL)

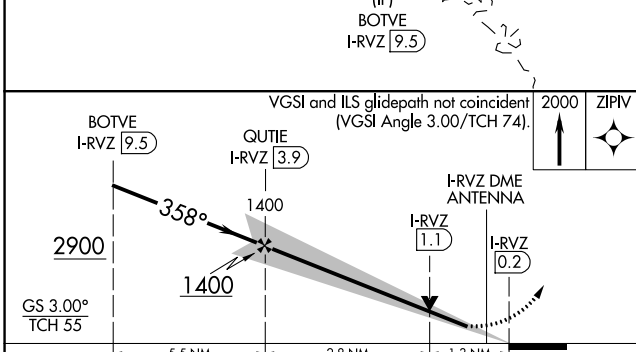
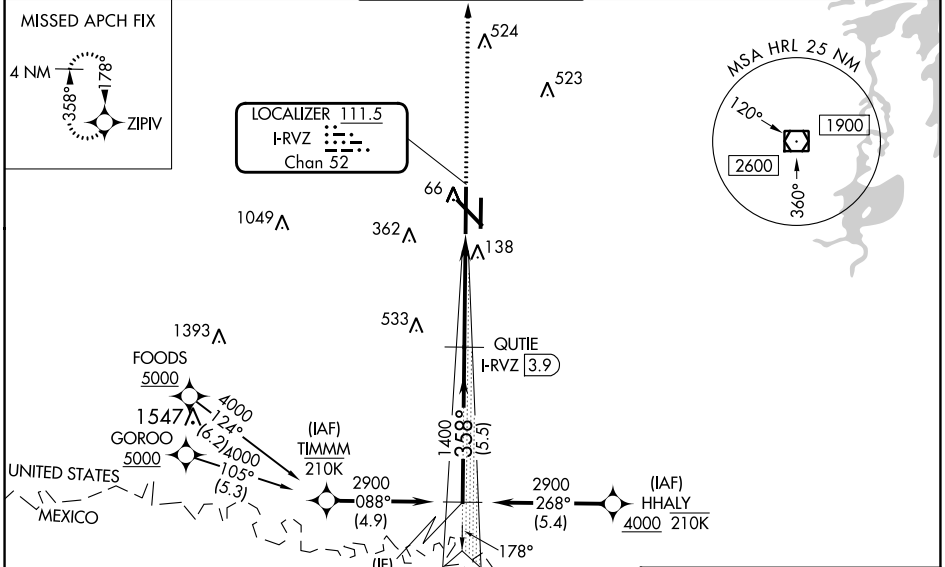
RNP APCH - GPS.

DME required.

▽ VDP NA when using PIL altimeter setting. When local altimeter setting not received, use Port Isabel altimeter setting and increase S-ILS 36L DA to 278 feet; increase all MDAs 60 feet and S-LOC 36L Cats C and D visibilities to RVR 5500 and Circling visibility Cats C and D ¼ SM. For inop ALS, increase S-LOC 36L Cat C/D visibility to 1 ½ SM.
▲ * RVR 1800 authorized with use of FD or AP or HUD to DA (NA when using PIL altimeter setting).

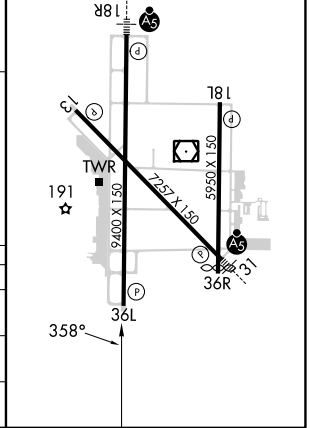
MISSED APPROACH:
Climb to 2000 direct ZIPIV and hold.

ATIS 124.85	VALLEY APP CON 120.7 279.5	HARLINGEN TOWER ★ 119.3 (CTAF) 0 317.6	GND CON 121.7	UNICOM 122.95
-----------------------	--------------------------------------	--------------------------------------------------	-------------------------	-------------------------



ELEV 36	D	TDZE 36
---------	----------	---------

HIRL Rwy 13-31 and 18R-36L
REIL Rwy 13 and 18L
MIRL Rwy 18L-36R



CATEGORY	A	B	C	D
S-ILS 36L *	236/24 200 (200-½)			
S-LOC 36L	500/24 464 (500-½)	500/50 464 (500-1)		
CIRCLING	500-1 464 (500-1)	560-1 524 (600-1)	600-1¾ 564 (600-1¾)	680-2 644 (700-2)

SC-3, 11 JUL 2024 to 08 AUG 2024

SC-3, 11 JUL 2024 to 08 AUG 2024