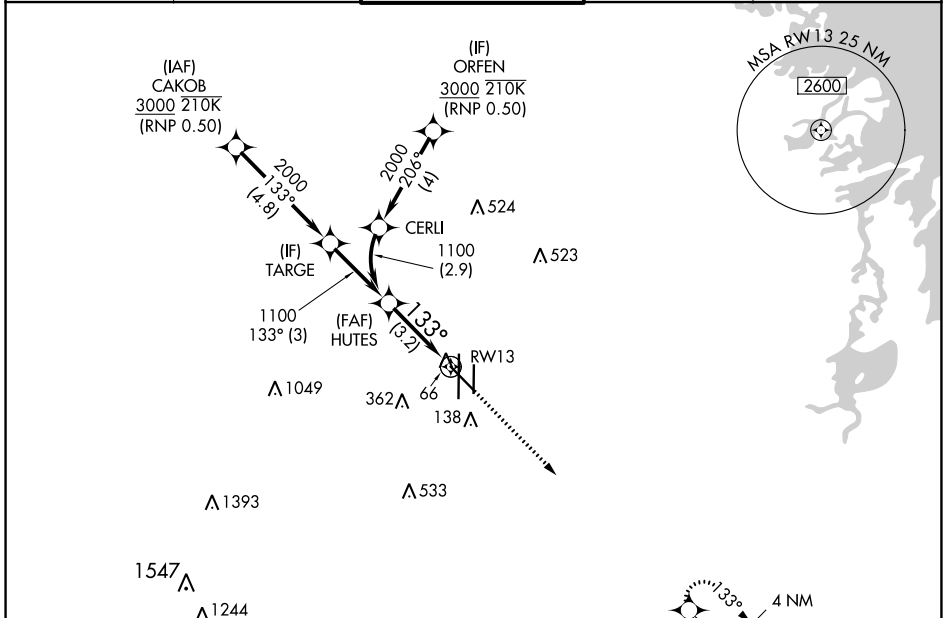


APP CRS	Rwy Idg	7257
133°	TDZE	35
	Apt Elev	36

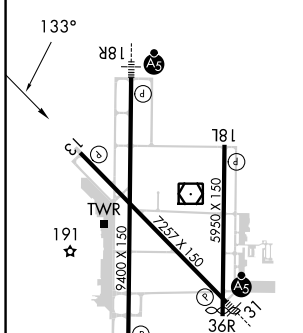
RNAV (RNP) Z RWY 13

VALLEY INTL (HRL)

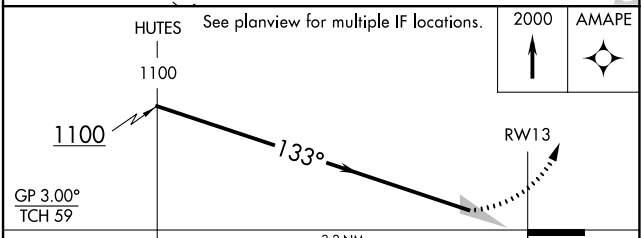
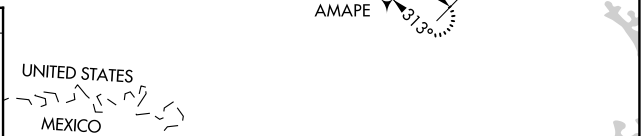
RNP AR APCH - GPS.			MISSED APPROACH: Climb to 2000 direct AMAPE and hold.	
<p>▼ For uncompensated Baro-VNAV systems, procedure NA below -1°C or above 54°C. When local altimeter setting not received, procedure NA.</p>				
ATIS	VALLEY APP CON	HARLINGEN TOWER ★	GND CON	UNICOM
124.85	120.7 279.5	119.3 (CTAF) 0 317.6	121.7	122.95



ELEV	36	D	TDZE	35
------	----	----------	------	----



MIRL Rwy 18L-36R
 REIL Rwys 13 and 18L
 HIRL Rwys 13-31 and 18R-36L



GP 3.00°				
TCH 59				
	3.2 NM			
CATEGORY	A	B	C	D
RNP 0.15 DA	285- ³ / ₄ 250 (300- ³ / ₄)			
RNP 0.30 DA	342- ⁷ / ₈ 307 (400- ⁷ / ₈)			

AUTHORIZATION REQUIRED

SC-3, 11 JUL 2024 to 08 AUG 2024

SC-3, 11 JUL 2024 to 08 AUG 2024