

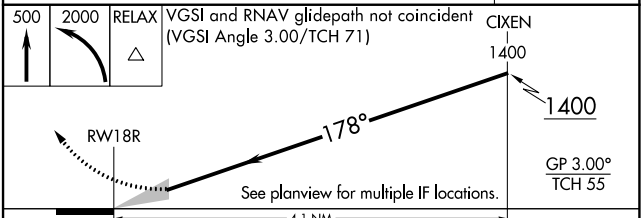
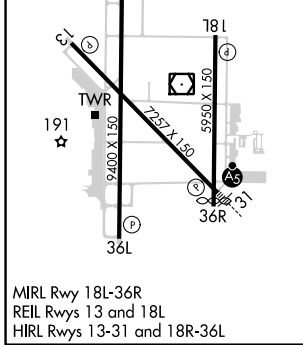
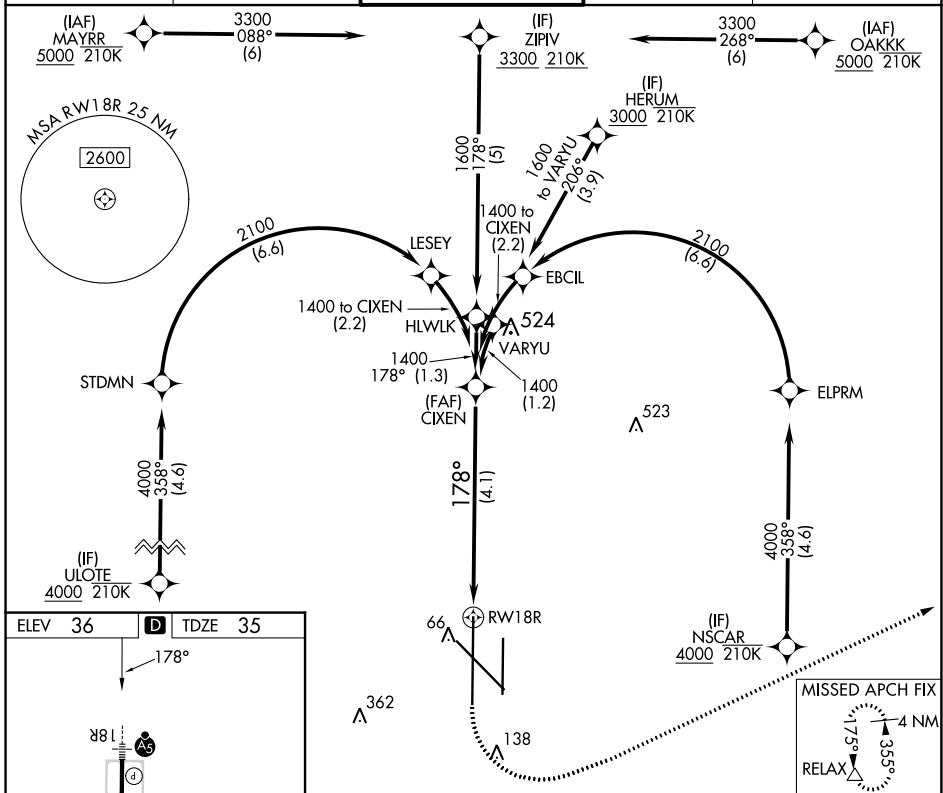
APP CRS	Rwy Idg	<b>9400</b>
<b>178°</b>	TDZE	<b>35</b>
	Apt Elev	<b>36</b>

# RNAV (RNP) Z RWY 18R

VALLEY INTL (H.R.L.)

RNP AR APCH - GPS.	MALSR	MISSED APPROACH: Climb to 500 then climbing left turn to 2000 direct RELAX and hold.
<p>▼ For uncompensated Baro-VNAV systems, procedure NA below -1°C or above 54°C. When local altimeter setting not received, procedure NA. For inop ALS, increase RNP 0.11 all Cats visibility to RVR 4000 and RNP 0.30 all Cats visibility to RVR 4500.</p>		

ATIS <b>124.85</b>	VALLEY APP CON <b>120.7 279.5</b>	HARLINGEN TOWER* <b>119.3(CTAF) 0 317.6</b>	GND CON <b>121.7</b>	UNICOM <b>122.95</b>
-----------------------	--------------------------------------	--	-------------------------	-------------------------



CATEGORY	A	B	C	D
RNP 0.11 DA		285/24	250 (300-½)	
RNP 0.30 DA		345/24	310 (400-½)	

**AUTHORIZATION REQUIRED**

SC-3, 11 JUL 2024 to 08 AUG 2024

SC-3, 11 JUL 2024 to 08 AUG 2024