

APP CRS	Rwy Idg	7257
313°	TDZE	36
	Apt Elev	36

RNAV (RNP) Z RWY 31

VALLEY INTL (HRL)

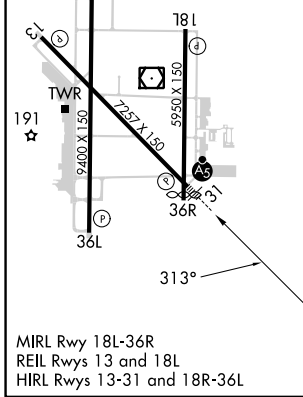
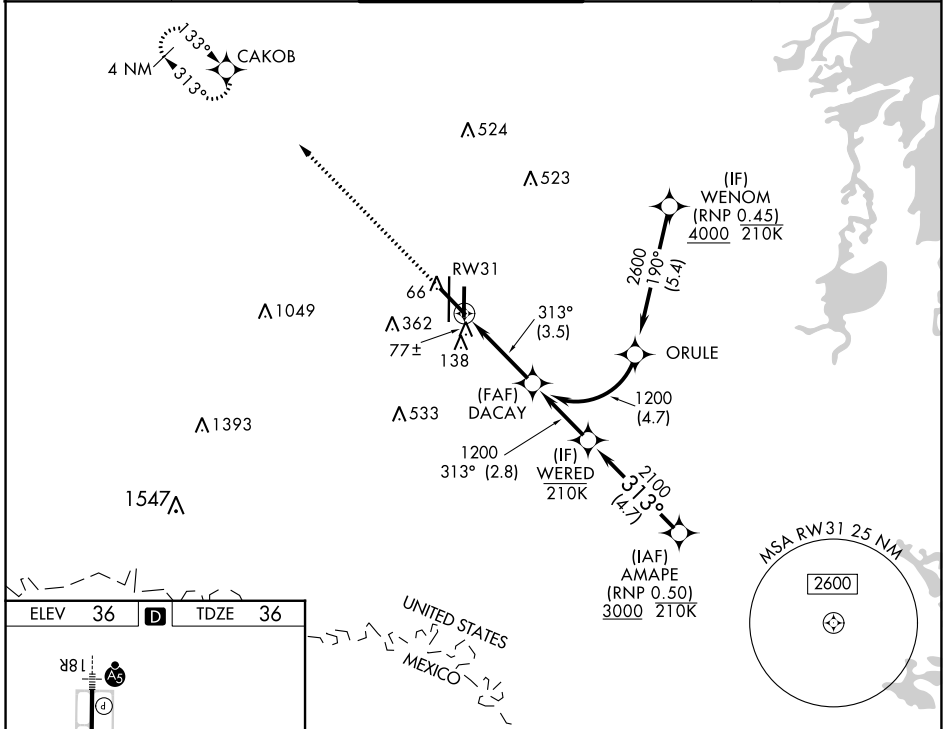
RNP AR APCH - GPS.

▼ For uncompensated Baro-VNAV systems, procedure NA below -1°C or above 54°C. For inop ALS, increase RNP 0.11 all Cats visibilities to ¾ SM and increase RNP 0.30 all Cats visibilities ⅔ SM. When local altimeter setting not received, procedure NA.

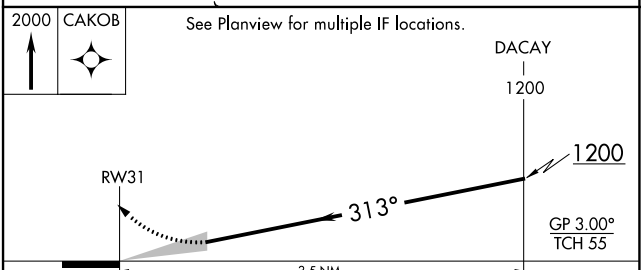


MISSED APPROACH:
Climb to 2000 direct
CAKOB and hold.

ATIS 124.85	VALLEY APP CON 120.7 279.5	HARLINGEN TOWER ★ 119.3(CTAF) 317.6	GND CON 121.7	UNICOM 122.95
-----------------------	--------------------------------------	---	-------------------------	-------------------------



MIRL Rwy 18L-36R
REIL Rwys 13 and 18L
HIRL Rwys 13-31 and 18R-36L



CATEGORY	A	B	C	D
RNP 0.11 DA		286-½	250 (300-½)	
RNP 0.30 DA		339-½	303 (400-½)	

AUTHORIZATION REQUIRED

SC-3, 11 JUL 2024 to 08 AUG 2024

SC-3, 11 JUL 2024 to 08 AUG 2024