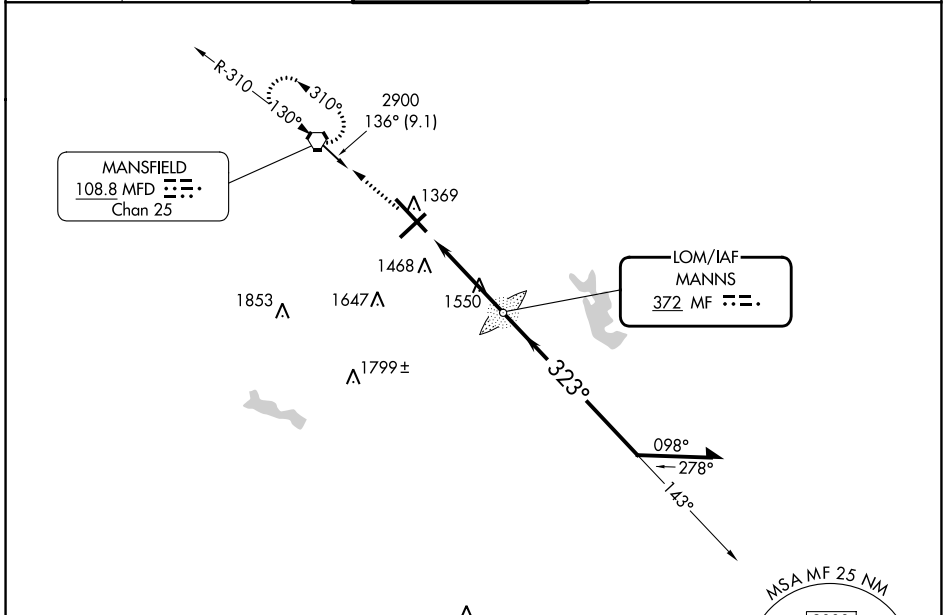


LOM MF 372	APP CRS 323°	Rwy Idg TDZE Apt Elev	9001 1293 1297
----------------------	------------------------	-----------------------------	---

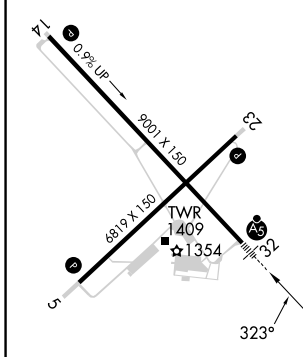
NDB RWY 32
MANSFIELD LAHM RGNL (MFD)

RADAR required for procedure entry.		MALSR 	MISSED APPROACH: Climb to 2900 direct MFD VORTAC and hold.
 For inoperative ALS increase Cats A/B visibility to RVR 5500 and Cats C/D visibility to 1 3/4 SM.			

ATIS 125.3	CLEVELAND APP CON ★ 128.35 360.65	MANSFIELD TOWER ★ 119.8 (CTAF) 291.775	GND CON 121.8 291.775	UNICOM 122.95
----------------------	---	--	---------------------------------	-------------------------



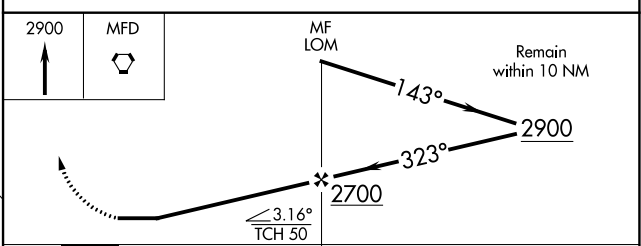
ELEV 1297	D	TDZE 1293
-----------	----------	-----------



HIRL Rws 5-23 and 14-32
REIL Rws 5 and 23

FAF to MAP 4 NM

Knots	60	90	120	150	180
Min:Sec	4:00	2:40	2:00	1:36	1:20



CATEGORY	A	B	C	D
S-32	1900/40	607 (700-3/4)	1900-1 3/8	607 (700-1 1/8)
<input checked="" type="checkbox"/> CIRCLING	1900-1	603 (700-1)	2000-2 703 (800-2)	2000-2 1/4 703 (800-2 1/4)

EC-2, 11 JUL 2024 to 08 AUG 2024

EC-2, 11 JUL 2024 to 08 AUG 2024