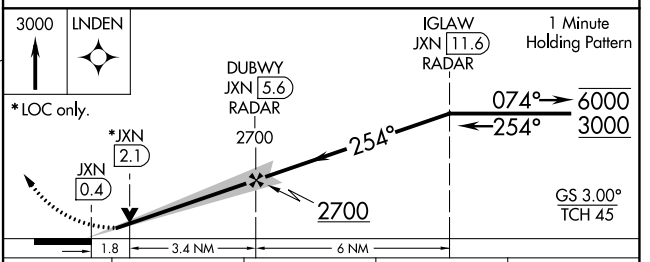
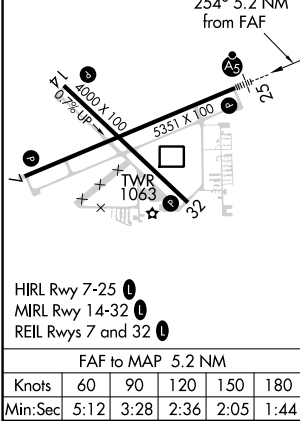
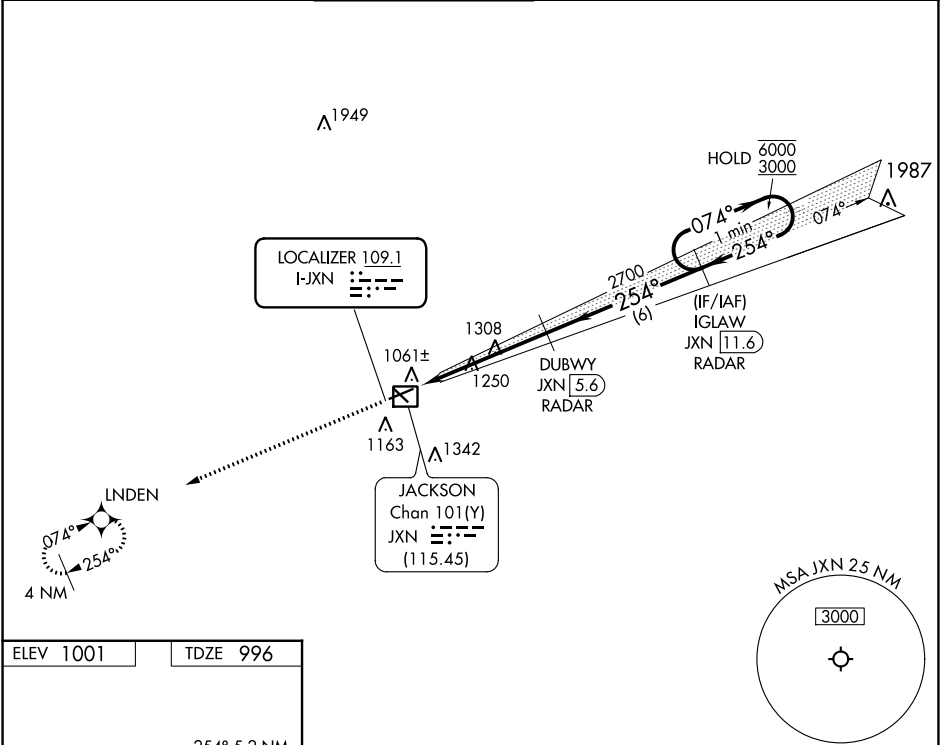


LOC I-JXN 109.1	APP CRS 254°	Rwy Idg TDZE Apt Elev	5351 996 1001
---------------------------	------------------------	-----------------------------	--

ILS or LOC RWY 25
JACKSON COUNTY/REYNOLDS FLD (JXN)

RNAV-1 GPS required. RADAR required for procedure entry. DME or RADAR required.		MALSR	MISSED APPROACH: Climb to 3000 direct LNDEN and hold.		
For inop ALS, increase S-LOC 25 Cat C/D visibility to 1¾ SM.					
ATIS 125.725	GREAT LAKES APP CON * 127.3 335.575	JACKSON TOWER * 128.475(CTAF) 0 257.8	GND CON 121.9	CLNC DEL 121.9	UNICOM 122.95



CATEGORY	A	B	C	D
S-ILS 25	1196-½		200 (200-½)	
S-LOC 25	1620-½	624 (700-½)	1620-1¾	624 (700-1¾)
CIRCLING	1620-1	619 (700-1)	1660-1¾	1660-2

EC-1, 11 JUL 2024 to 08 AUG 2024

EC-1, 11 JUL 2024 to 08 AUG 2024