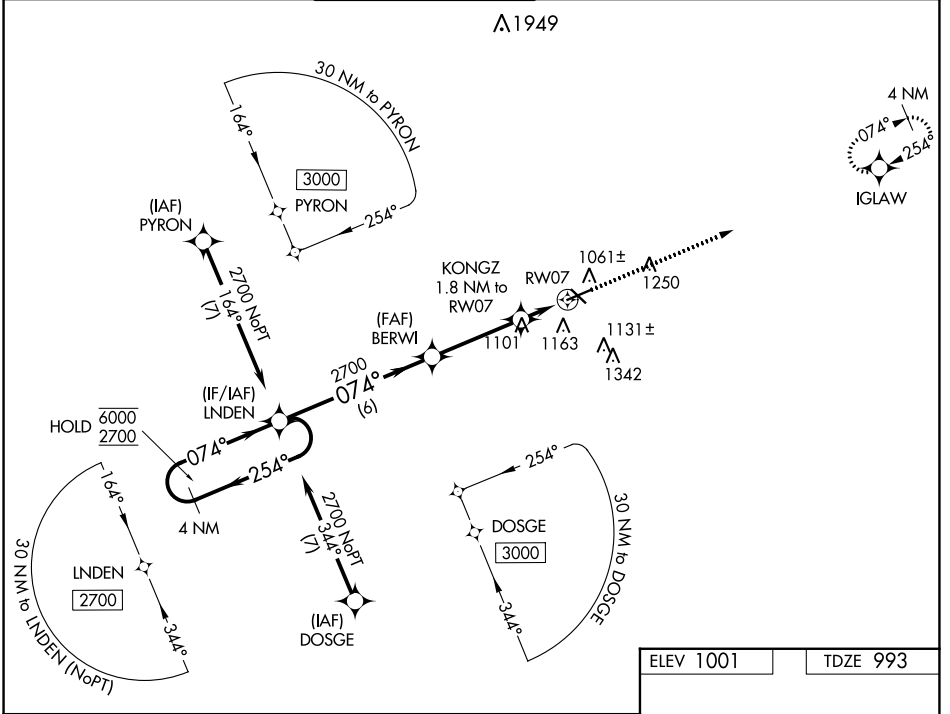


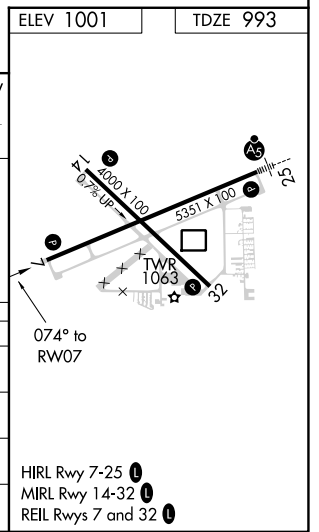
WAAS CH <b>62841</b> <b>W07A</b>	APP CRS <b>074°</b>	Rwy Idg TDZE Apt Elev	<b>5351</b> <b>993</b> <b>1001</b>
--	------------------------	-----------------------------	--

**RNAV (GPS) RWY 7**  
JACKSON COUNTY/REYNOLDS FLD (JXN)

RNP APCH.		MISSED APPROACH: Climb to 3000 direct IGLAW and hold.		
▼ For uncompensated Baro-VNAV systems, LNAV/ VNAV NA below -23°C or above 54°C.				
ATIS <b>125.725</b>	GREAT LAKES APP CON * <b>127.3 335.575</b>	JACKSON TOWER * <b>128.475 (CTAF) 257.8</b>	GND CON <b>121.9</b>	CLNC DEL <b>121.9</b>
		UNICOM <b>122.95</b>		



4 NM Holding Pattern		LNDEN		BERWI		KONGZ 1.8 NM to RW07		RW07	
6000 2700		← 254°		074° →		074°		*1600	
GP 3.00°		TCH 37		6 NM		3.5 NM		0.6 NM	
								1.2 NM	
CATEGORY	A	B	C	D					
LPV DA	1258-7/8		265 (300-7/8)						
LNAV/VNAV DA	1292-7/8		299 (300-7/8)						
LNAV MDA	1400-1 407 (400-1)		1400-1 1/2 407 (400-1 1/2)						
CIRCLING	1480-1 479 (500-1)		1660-1 3/4 659 (700-1 3/4)		1660-2 659 (700-2)				



EC-1, 11 JUL 2024 to 08 AUG 2024

EC-1, 11 JUL 2024 to 08 AUG 2024

HIRL Rwy 7-25  
MIRL Rwy 14-32  
REIL Rwys 7 and 32