

LOC/DME I-FRT	APP CRS	Rwy Idg	7659
109.5	216°	TDZE	38
Chan 32		Apt Elev	42

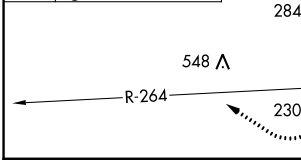
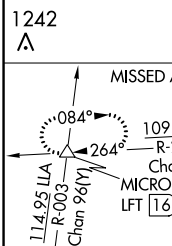
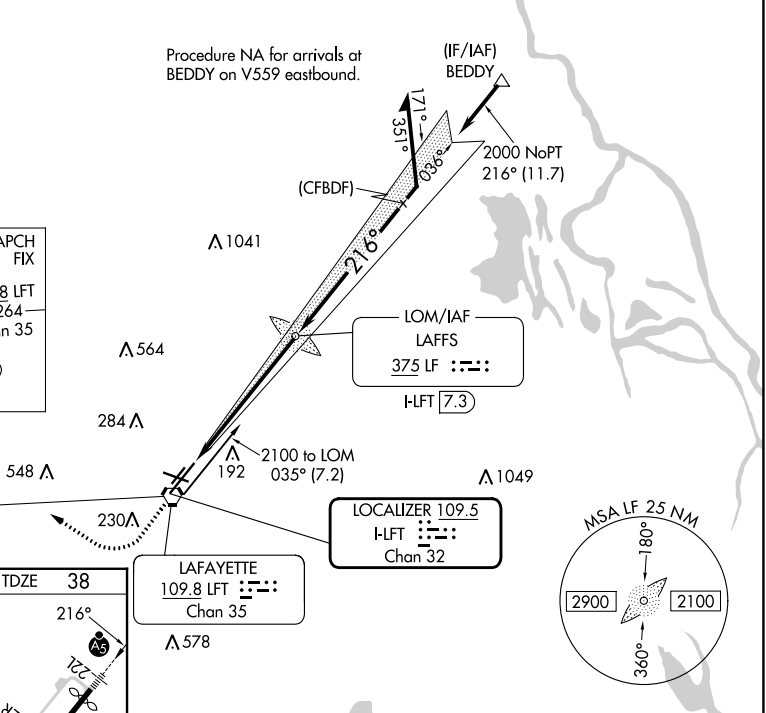
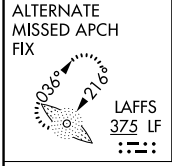
**ILS or LOC RWY 22L**  
LAFAYETTE RGNL/PAUL FOURNET FLD (L.F.T)

**⚠** VDP NA with Acadiana Rgnl altimeter setting. When local altimeter setting not received, use Acadiana Rgnl altimeter setting and increase DA to 267 feet; increase all MDA 40 feet and S-LOC 22L visibility Cat C/D to RVR 5000 and Circling visibility Cat C/D ¼ SM. For inop MALSR when using Acadiana Rgnl altimeter setting, increase S-LOC 22L Cat C and D visibility to 1 ½ mile.  
\*\*RVR 1800 authorized with use of FD or AP or HUD to DA (NA when using Acadiana Rgnl altimeter setting).

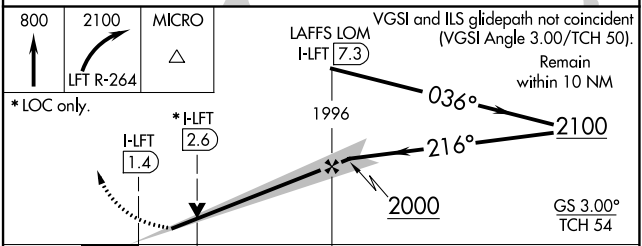
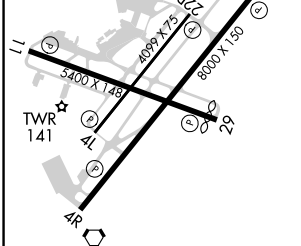
**MALSR**  
AS

**MISSED APPROACH:**  
Climb to 800 then climbing right turn to 2100 on LFT VORTAC R-264 to MICRO INT/ LFT 16 DME and hold.

ATIS	LAFAYETTE APP CON *	LAFAYETTE TOWER *	GND CON	CLNC DEL	UNICOM
134.05	121.1 363.0	118.5 (CTAF) 257.8	121.8	125.55	122.95



ELEV 42	D	TDZE 38



CATEGORY	A	B	C	D
S-ILS 22L**		238/24	200 (200-½)	
S-LOC 22L	480/24	442 (500-½)	480/45	442 (500-¾)
<b>C</b> CIRCLING	540-1 498 (500-1)	580-1 538 (600-1)	700-1¾ 658 (700-1¾)	700-2 658 (700-2)

SC-4, 11 JUL 2024 to 08 AUG 2024

SC-4, 11 JUL 2024 to 08 AUG 2024