

WAAS CH 45903 W04A	APP CRS 036°	Rwy Idg 8000 TDZE 40 Apt Elev 42
--	------------------------	---

RNAV (GPS) RWY 4R

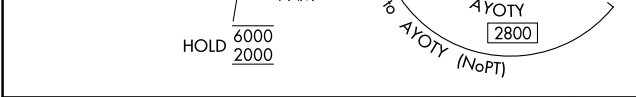
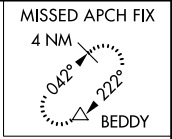
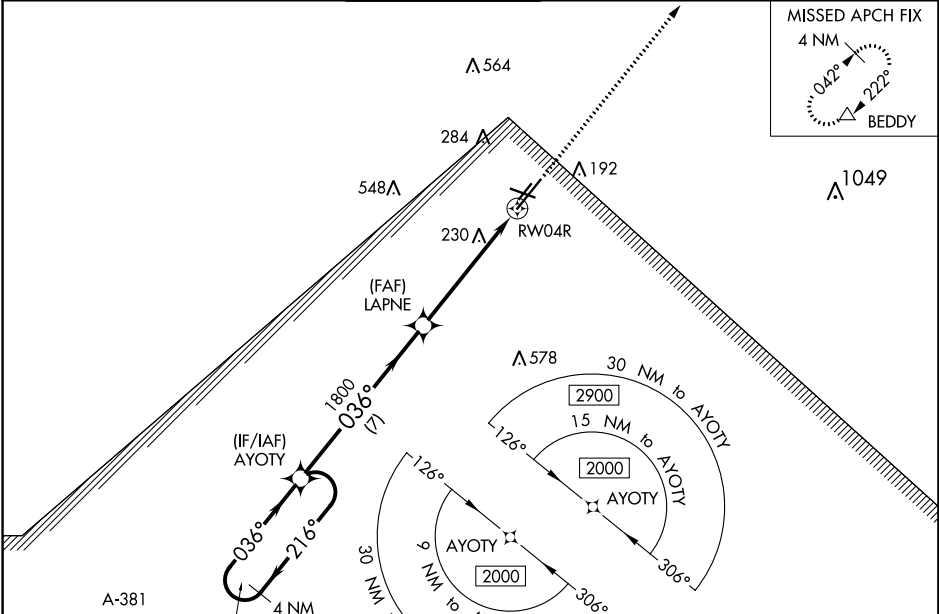
LAFAYETTE RGNL/PAUL FOURNET FLD (L.F.T)

RNP APCH.

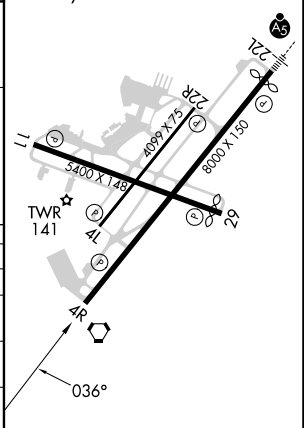
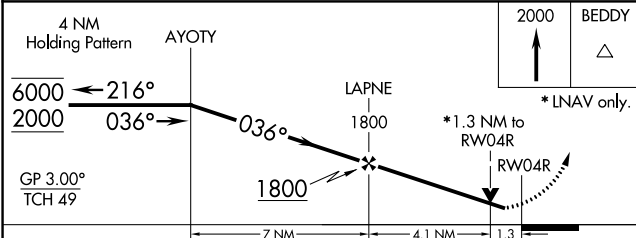
⚠ Rwy 4R helicopter visibility reduction below 3/4 SM NA.
For uncompensated Baro-VNAV systems, LNAV/VNAV NA below -2°C or above 54°C.

MISSED APPROACH: Climb to 2000 direct BEDDY and hold.

ATIS 134.05	LAFAYETTE APP CON ★ 121.1 363.0	LAFAYETTE TOWER ★ 118.5 (CTAF) 257.8	GND CON 121.8	CLNC DEL 125.55	UNICOM 122.95
-----------------------	---	--	-------------------------	---------------------------	-------------------------



ELEV 42	D TDZE 40
REIL Rwy 4L, 4R, 11, 22R and 29 MIRL Rwy 11-29 and 4L-22R HIRL Rwy 4R-22L	



CATEGORY	A	B	C	D
LPV DA		317-7/8	277 (300-7/8)	
LNAV/VNAV DA		440-1 1/8	400 (400-1 1/8)	
LNAV MDA	500-1	460 (500-1)	500-1 3/8	460 (500-1 3/8)
C CIRCLING	500-1 458 (500-1)	580-1 538 (600-1)	700-1 3/4 658 (700-1 3/4)	700-2 658 (700-2)

RNAV (GPS) RWY 4R

SC-4, 11 JUL 2024 to 08 AUG 2024

SC-4, 11 JUL 2024 to 08 AUG 2024