

WAAS CH 93836 W12A	APP CRS 127°	Rwy Idg TDZE Apt Elev	7506 4457 4457
--	------------------------	-----------------------------	---

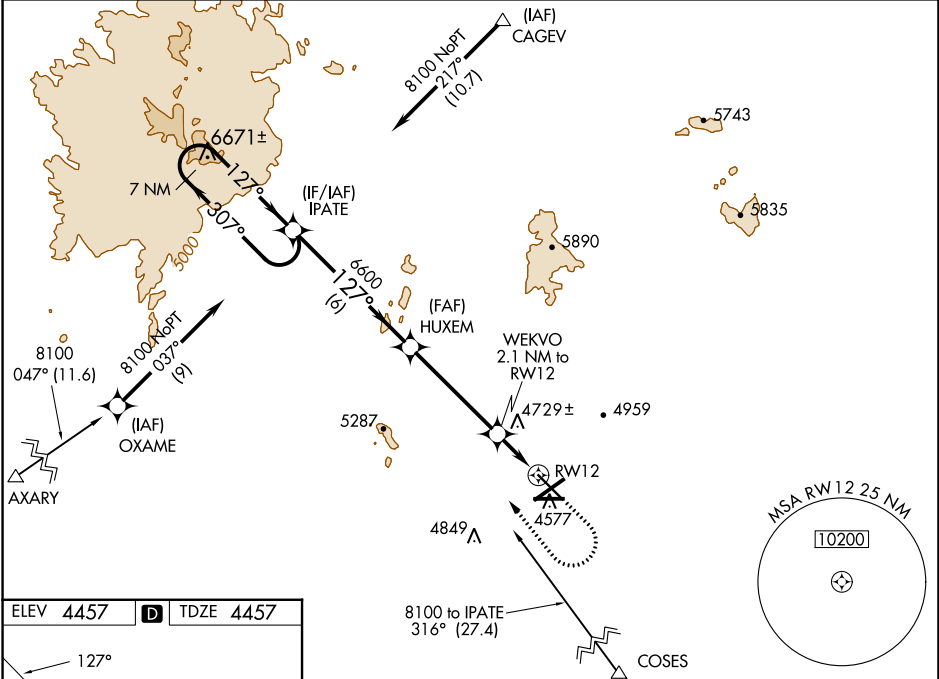
RNAV (GPS) RWY 12

LAS CRUCES INTL (LRU)

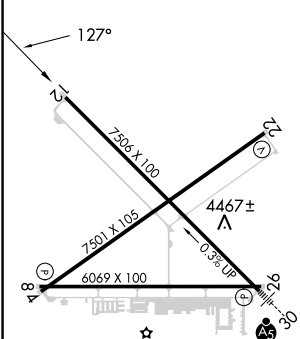
⚠ For uncompensated Baro-VNAV systems, LNAV/VNAV NA below -12 °C (11 °F) or above 49 °C (120 °F). DME/DME RNP-0.3 NA. Helicopter visibility reduction below 3/4 SM NA. Baro-VNAV and VDP NA when using Deming altimeter setting. When local altimeter setting not received, use Deming altimeter setting; increase LPV DA to 4821 feet and LNAV/VNAV DA to 4824 feet and all visibilities 1/2 mile; increase all MDA 120 feet and visibility Cat C and D 1/2 mile.

MISSED APPROACH: Climb to 5800 then climbing right turn to 8100 direct IPATE and hold.

AWOS-3 119.025	ALBUQUERQUE CENTER 128.2 285.5	UNICOM 122.7 (CTAF) 0
--------------------------	--	---------------------------------



ELEV 4457	D	TDZE 4457
------------------	----------	------------------



7 NM Holding Pattern	IPATE	HUXEM	WEKVO 2.1 NM to RW12	8100	8100	IPATE
	6600	6600	*1.2 NM to RW12	GP 3.00° TCH 55	6600	*5180
	6 NM	4.5 NM	0.9 NM		1.2 NM	

CATEGORY	A	B	C	D
LPV DA		4707-3/4	250 (300-3/4)	
LNAV/VNAV DA		4710-3/4	253 (300-3/4)	
LNAV MDA	4900-1	443 (500-1)	4900-13/8	443 (500-13/8)
C CIRCLING	4900-1 443 (500-1)	5040-1 583 (600-1)	5320-2 1/2 863 (900-2 1/2)	5320-2 3/4 863 (900-2 3/4)

REIL Rwy 12
HIRL Rwy 12-30 0
MIRL Rwy 4-22 and 8-26 0

LAS CRUCES, NEW MEXICO
Amdt 2 18AUG16

32°17'N-106°55'W

LAS CRUCES INTL (LRU)

RNAV (GPS) RWY 12

SW-1, 11 JUL 2024 to 08 AUG 2024