

LOC/DME I-CLM 108.9 Chan 26	APP CRS 089°	Rwy Idg 6347 TDZE 285 Apt Elev 291
---	------------------------	---

ILS or LOC RWY 9

WILLIAM R FAIRCHILD INTL (CLM)

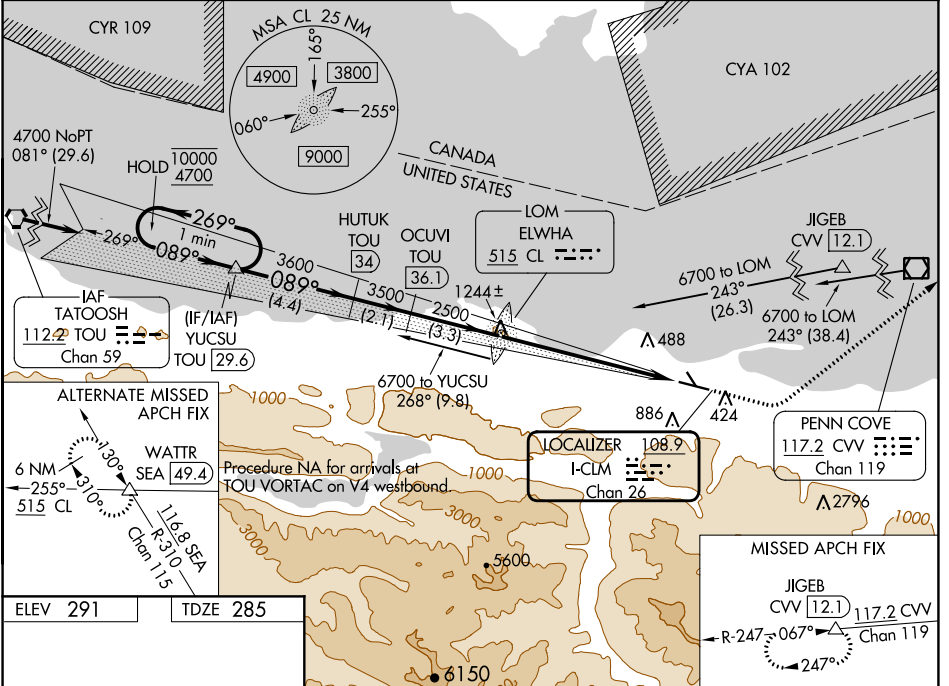
DME required. ADF required for LOC only.
ADF required for procedure entry at JIGEB and CVV VOR/DME.

NA Circling NA south of Rwy 9-27. Circling Rwy 13, 31 NA at night.
DME from TOU VORTAC. Simultaneous reception of I-CLM and TOU DME required. For inop ALS, increase S-LOC 9 Cat C/D visibility to 1 1/4 SM.



MISSED APPROACH: Climb to 1000 then climbing left turn to 5400 on heading 030° and on CVV VOR/DME R-247 to JIGEB/CVV 12.1 DME and hold, continue climb-in-hold to 5400.

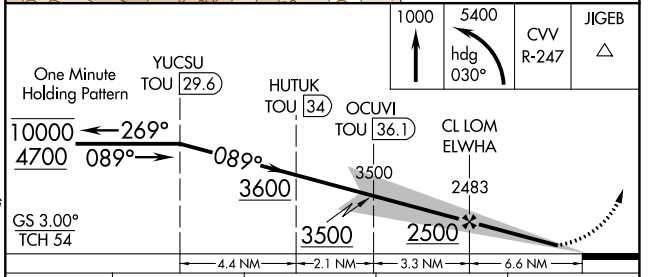
ASOS 135.175	WHIDBEY APP CON 118.2 285.65	CLNC DEL 124.15	UNICOM 122.975 (CTAF)
------------------------	--	---------------------------	---------------------------------



NW-1, 11 JUL 2024 to 08 AUG 2024

NW-1, 11 JUL 2024 to 08 AUG 2024

ELEV 291	TDZE 285
MIRL Rwy 9-27	
REIL Rwy 27	
FAF to MAP 6.6 NM	
Knots	60 90 120 150 180
Min:Sec	6:36 4:24 3:18 2:38 2:12



CATEGORY	A	B	C	D
S-ILS 9	496-1/2 211 (300-1/2)			
S-LOC 9	900-1/2	615 (700-1/2)	900-1 3/8	615 (700-1 3/8)
C CIRCLING	900-1	609 (700-1)	900-1 3/4	1000-2 1/4 609 (700-1 3/4) 709 (800-2 1/4)