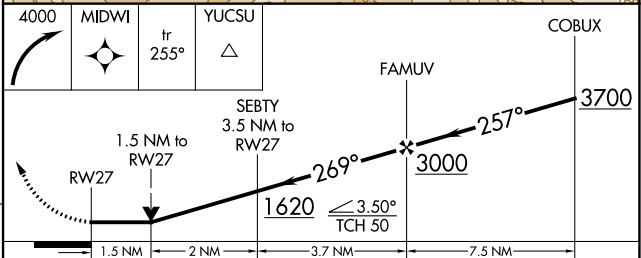
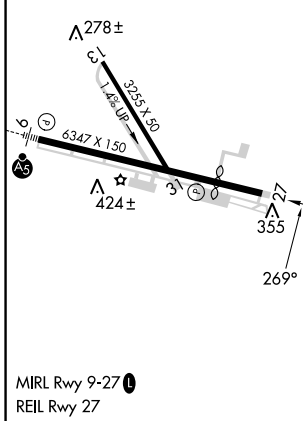
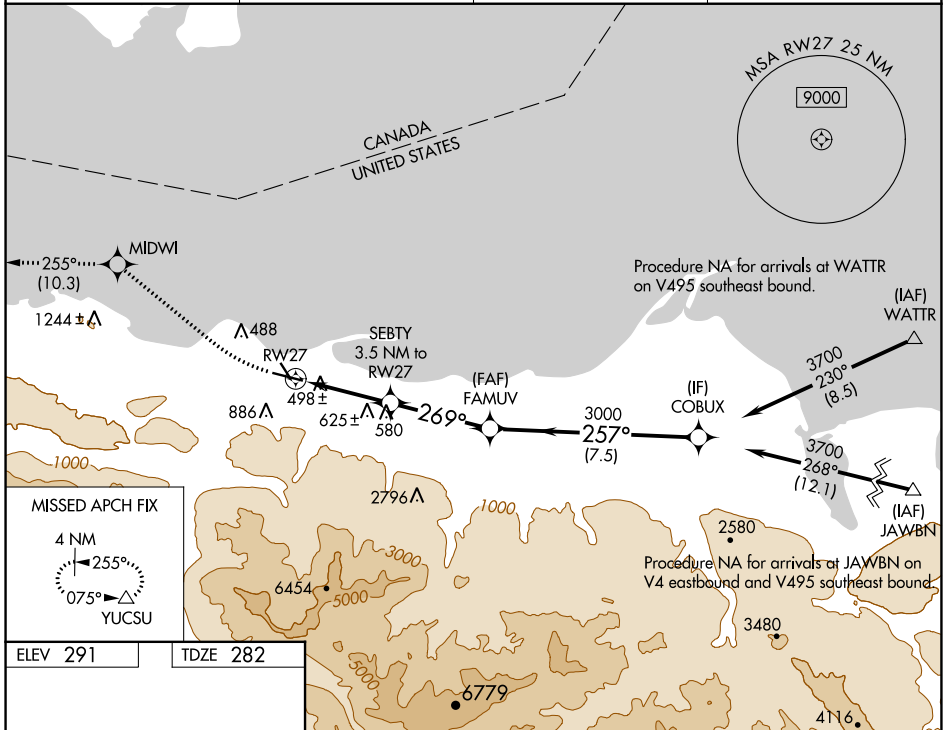


|  |                        |                             |   |
|--|------------------------|-----------------------------|---|
| WAAS<br>CH <b>90338</b><br><b>W27A</b> | APP CRS<br><b>269°</b> | Rwy ldg<br>TDZE<br>Apt Elev | <b>4993</b><br><b>282</b><br><b>291</b> |
|--|------------------------|-----------------------------|---|

# RNAV (GPS) RWY 27

WILLIAM R FAIRCHILD INTL (CLM)

|  |  |  |  |
|--|--|--|--|
| RNP APCH - GPS.  |  | MISSED APPROACH: Climbing right turn to 4000 direct MIDWI and on track 255° to YUCSU and hold. |  |
| <p>⚠ Circling Rwy 13, 31 NA at night.<br/>                 ⚠ Rwy 27 helicopter visibility reduction below ¼ SM NA.<br/>                 Circling NA south of Rwy 9-27.</p> |  | ASOS<br><b>135.175</b>   | WHIDBEY APP CON<br><b>118.2 285.65</b> |
|  |  | CLNC DEL<br><b>124.15</b>  | UNICOM<br><b>122.975 (CTAF) 1</b>      |



| CATEGORY          | A     | B           | C   | D  |
|-------------------|-------|-------------|---|--|
| LP MDA            | 760-1 | 478 (500-1) | 760-1 <sup>3</sup> / <sub>8</sub>   | 478 (500-1 <sup>3</sup> / <sub>8</sub> )                                       |
| LNAV MDA          | 920-1 | 638 (700-1) | 920-1 <sup>3</sup> / <sub>4</sub>   | 638 (700-1 <sup>3</sup> / <sub>4</sub> )                                       |
| <b>C</b> CIRCLING | 920-1 | 629 (700-1) | 920-1 <sup>3</sup> / <sub>4</sub><br>629 (700-1 <sup>3</sup> / <sub>4</sub> ) | 1000-2 <sup>1</sup> / <sub>4</sub><br>709 (800-2 <sup>1</sup> / <sub>4</sub> ) |

NW-1, 11 JUL 2024 to 08 AUG 2024

NW-1, 11 JUL 2024 to 08 AUG 2024