

WAAS CH <b>7703</b> <b>W09A</b>	APP CRS <b>088°</b>	Rwy ldg TDZE Apt Elev	<b>6347</b> <b>285</b> <b>291</b>
---------------------------------------	------------------------	-----------------------------	---

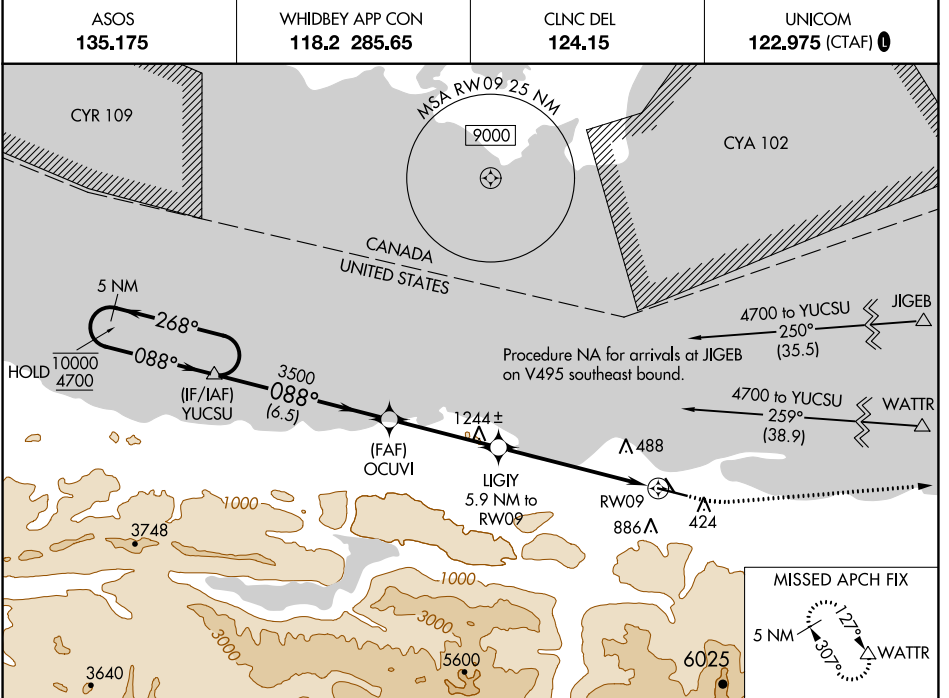
# RNAV (GPS) RWY 9

WILLIAM R FAIRCHILD INTL (CLM)

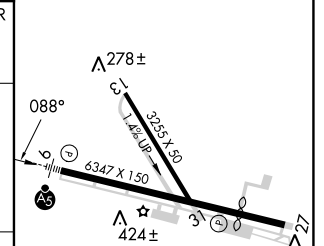
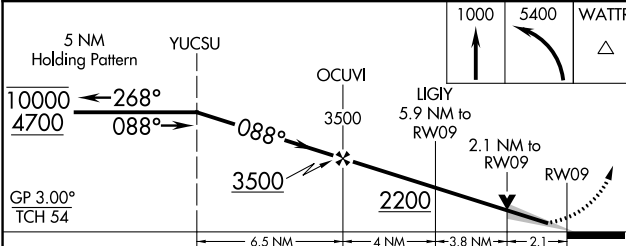
RNP APCH - GPS.

**MAJLR**  
MISSED APPROACH: Climb to 1000 then climbing left turn to 5400 direct WATTR and hold, continue climb-in-hold to 5400.

**ASOS** 135.175      **WHIDBEY APP CON** 118.2 285.65      **CLNC DEL** 124.15      **UNICOM** 122.975 (CTAF) **1**



ELEV 291	TDZE 285
----------	----------



CATEGORY	A	B	C	D
LPV DA	505-1/2		220 (300-1/2)	
LNAV/VNAV DA	757-1 1/8		472 (500-1 1/8)	
LNAV MDA	960-1/2	675 (700-1/2)	960-1 1/2	675 (700-1 1/2)
<b>CIRCLING</b>	960-1	669 (700-1)	960-1 7/8	1000-2 1/4
			669 (700-1 7/8)	709 (800-2 1/4)

MIRL Rwy 9-27 **1**  
REIL Rwy 27

NW-1, 11 JUL 2024 to 08 AUG 2024

NW-1, 11 JUL 2024 to 08 AUG 2024