

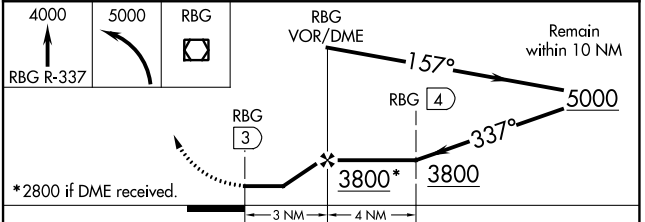
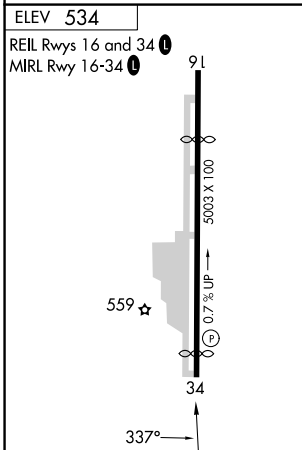
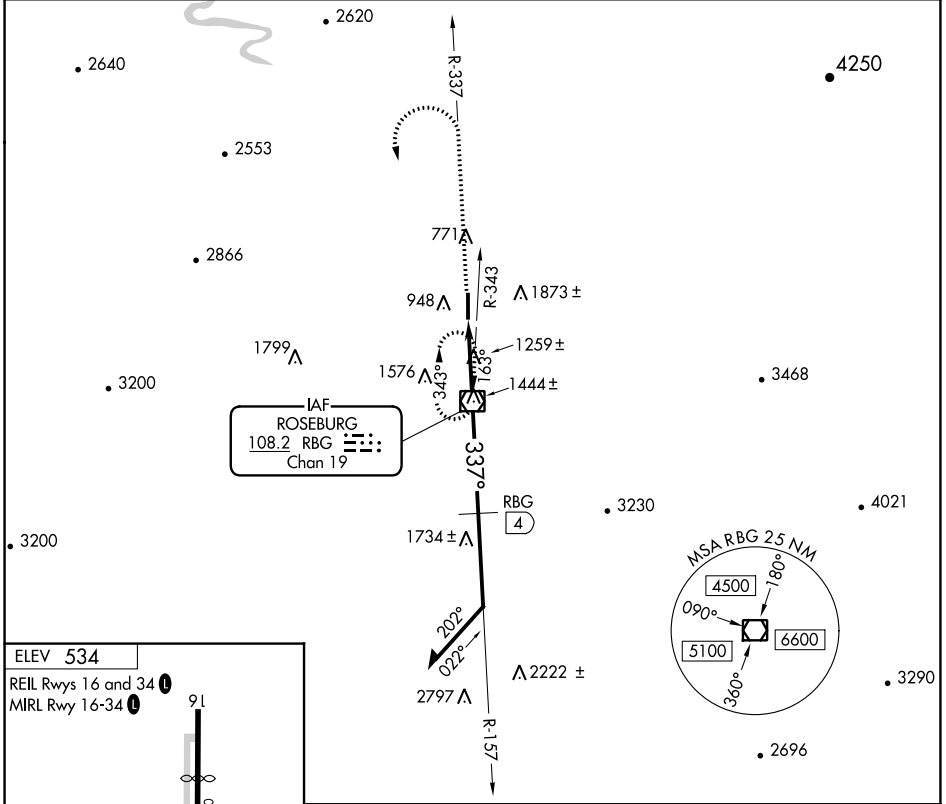
VOR/DME RBG 108.2 Chan 19	APP CRS 337°	Rwy Idg TDZE Apt Elev N/A N/A 534
---	------------------------	--

VOR-A
ROSEBURG RGNL (R.B.G)

⚠ NA Circling not authorized east of Rwy 16-34. Procedure NA at night. Rwy 34 helicopter visibility reduction below 1 SM NA.

MISSED APPROACH: Climb to 4000 on RBG VOR/DME R-337 within 1.5 NM; then climbing left turn to 5000 direct RBG VOR/DME and hold.

ASOS 135.475	SEATTLE CENTER 127.55 239.0	UNICOM 122.8 (CTAF) 0
------------------------	---------------------------------------	--



CATEGORY	A	B	C	D
CIRCLING	2600-1¼ 2066 (2100-1¼)	2600-1½ 2066 (2100-1½)	2600-3	2066 (2100-3)
DME MINIMUMS				
CIRCLING	1740-1¼ 1206 (1300-1¼)	1740-1½ 1206 (1300-1½)	2020-3 1486 (1500-3)	2100-3 1566 (1600-3)

FAF to MAP 3 NM					
Knots	60	90	120	150	180
Min:Sec	3:00	2:00	1:30	1:12	1:00

NW-1, 11 JUL 2024 to 08 AUG 2024

NW-1, 11 JUL 2024 to 08 AUG 2024