

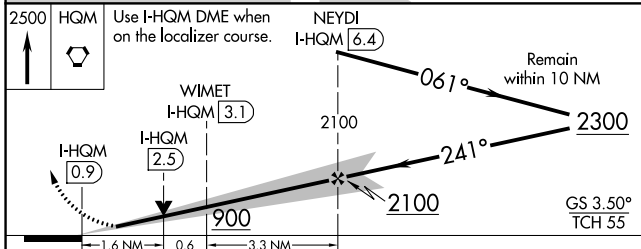
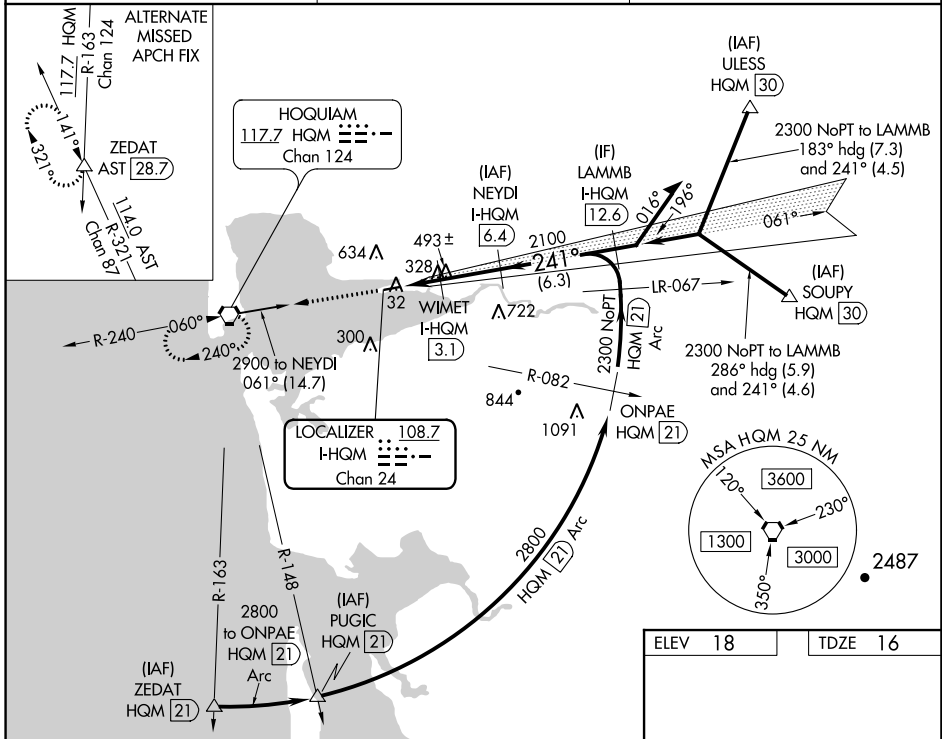
LOC/DME I-HQM 108.7 Chan 24	APP CRS 241°	Rwy Idg 5000 TDZE 16 Apt Elev 18
---	------------------------	---

ILS or LOC RWY 24

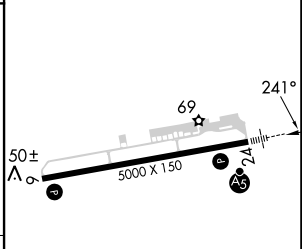
BOWERMAN (HQM)

DME required.	MALSR	MISSED APPROACH: Climb to 2500 direct HQM VORTAC and hold.
<p>⚠ Circling NA northwest of Rwy 6-24. When local altimeter setting not received, procedure NA. For inop ALS, increase S-ILS 24 Cat C visibility to ¾ and S-LOC 24 Cat C visibility to 1 ½ SM.</p>		

ASOS 135.775	SEATTLE CENTER 128.3 269.0	UNICOM 122.7 (CTAF)
------------------------	--------------------------------------	-------------------------------



ELEV 18	TDZE 16
---------	---------



CATEGORY	A	B	C	D
S-ILS 24	216-½	200 (200-½)	286-½ 270 (300-½)	NA
S-LOC 24	580-½	564 (600-½)	580-1¼ 564 (600-1¼)	NA
CIRCLING	580-1	562 (600-1)	800-2¼ 782 (800-2¼)	NA

REIL Rwy 6	REIL Rwy 6-24
------------	---------------

NW-1, 11 JUL 2024 to 08 AUG 2024

NW-1, 11 JUL 2024 to 08 AUG 2024